



Charlie Crist
Governor
Cynthia R. Lorenzo
Director

FOR IMMEDIATE RELEASE
EMBARGOED: November 20, 2009, 10:00AM

CONTACT: Robby Cunningham
(850) 245-7130
roby.cunningham@flaawi.com

Florida's October Employment Figures Released

www.employflorida.com – www.FlaRecovery.com

TALLAHASSEE – Florida's seasonally adjusted unemployment rate for October 2009 is 11.2 percent. This represents 1,027,000 jobless out of a labor force of 9,175,000. The unemployment rate is nearly unchanged from the revised September rate of 11.1 percent, but is up 4.3 percentage points from the October 2008 rate. The state's current unemployment rate is 1.0 percentage point higher than the national unemployment rate of 10.2 percent. October's rate was the highest since June 1975 when it was also 11.2 percent. The last time it was higher was May 1975 when it was 11.9 percent.

Florida's total nonagricultural employment in October 2009 is 7,340,200, representing a job loss of 339,600, or -4.4 percent compared to October 2008. This is steeper than the national rate of decline for October which is -4.0 percent over the year. The October 2009 job loss continues the trend of annual declines that began in August 2007. Florida's rate of job decline has moderated over the last few months, moving from -5.4 percent in March 2009 to -4.4 percent in October 2009.

Industries losing the most jobs are trade, transportation, and utilities; professional and business services; and construction. These three industries account for more than two-thirds of the job losses in the state. Healthcare has been Florida's only growth sector for most of 2009.

"This rate indicates that Florida's families and businesses are still facing challenges, while fewer job losses reveal slight improvement in the economic climate," said Agency for Workforce Innovation Director Cynthia R. Lorenzo. "We remain committed to serving the needs of unemployed workers and employers through Florida's dynamic network of job placement and training services."

AWI continues to enhance customer services to meet record demand. A new feature on the agency's website, www.floridajobs.org, allows unemployment compensation customers to search online to find out whether they might be eligible to receive benefits under the Emergency Unemployment Compensation Tier III program, signed into law by President Obama on November 6, 2009. The agency expects to begin making payments under the new program early next month.

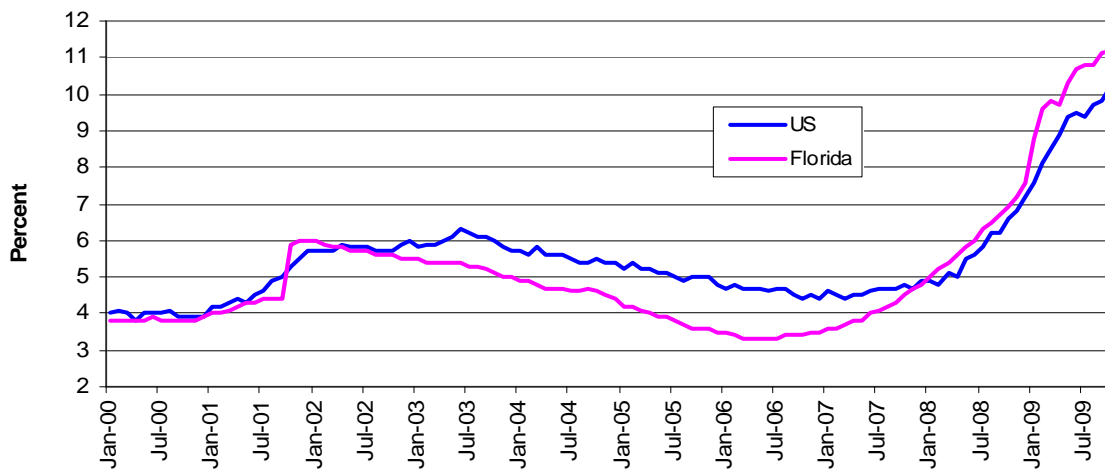
Florida's workforce system provides critical programs and services to job seekers and businesses alike. Such services offered throughout the state include:

- **Employ Florida Marketplace:** The Employ Florida Marketplace Online Job Bank provides 24/7 access to a wide variety of local, state and national job openings. Follow this link to access the [Employ Florida Marketplace](http://www.employflorida.com/). (www.employflorida.com/).
- **One-Stop Career Centers:** Florida's nearly 90 One-Stop Career Centers, locally operated by Regional Workforce Boards, provide local access to job placement services, local workforce information and job training opportunities. Follow this link for a [Map of Florida One-Stop Career Centers](http://www.floridajobs.org/onestop/onestopdir/index.htm). (www.floridajobs.org/onestop/onestopdir/index.htm)
- **Mobile One-Stop Career Centers:** Florida's Mobile One-Stop Career Centers allow citizens in rural areas, at job fairs and during disasters or other emergencies to access critical workforce information and services.

- **Ready to Work Credential:** The Florida Ready to Work Credential program provides a career readiness certificate signed by Governor Charlie Crist that verifies the employee or job seeker has the foundational workplace skills required for most positions. Of value to both businesses looking to hire and workers seeking to find or maintain employment, Ready to Work is a free program funded by the State of Florida. For more information, please visit www.floridareadytowork.com or call 1-877-444-4505.
- **Labor Market Information:** The Agency for Workforce Innovation's Labor Market Statistics Center produces data such as employment, unemployment and wage information that assist workforce/economic development, education, employers and job seekers. These statistics assist with economic analysis, business recruitment, career counseling and other critical business decision-making. Follow this link for information about the Agency's [Labor Market Statistics Center](http://www.labormarketinfo.com/). (www.labormarketinfo.com/.)
- **Work Opportunity Tax Credit:** The Work Opportunity Tax Credit offers a financial incentive to private, for-profit employers to hire individuals from certain targeted groups who experience high rates of unemployment due to a variety of employment barriers. Follow this link for information about the [Work Opportunity Tax Credit](http://www.floridajobs.org/workforce/wotc.html). (www.floridajobs.org/workforce/wotc.html)

For more information on these and other Agency for Workforce Innovation programs, go to www.FloridaJobs.org.

United States and Florida Unemployment Rates (seasonally adjusted)



Source: Florida Agency for Workforce Innovation, Labor Market Statistics Center, Local Area Unemployment Statistics Program, in cooperation with the U.S. Department of Labor, Bureau of Labor Statistics.

Florida's Nonagricultural Employment by Industry (Seasonally Adjusted)

- The number of jobs in Florida is 7,340,200, down 339,600 in October 2009 compared to a year ago. The industry losing the most jobs is trade, transportation, and utilities (-86,100 jobs, -5.5 percent).
- Other industries losing jobs over the year include: professional and business services (-75,100 jobs, -6.6 percent); construction (-74,100 jobs, -15.2 percent); manufacturing (-44,600 jobs, -12.2 percent); financial activities (-27,200 jobs, -5.2 percent); leisure and hospitality (-22,400 jobs, -2.4 percent); total government (-10,300 jobs, -0.9 percent); information (-6,700 jobs, -4.4 percent); and other services (-4,500 jobs, -1.3 percent).
- These industry job losses are partially due to weakness in motor vehicle and parts dealers; employment services; specialty trade contractors; fabricated metal product manufacturing; credit intermediation; amusement, gambling, and recreation; local government; publishing industries; and personal and laundry services.

Agency for Workforce Innovation

The Caldwell Building, Suite 100•107 East Madison Street•Tallahassee, Florida•32399-4120
 Telephone (850) 245-7105•Fax (850) 921-3223•TTY/TDD 1-800-955-8771-Voice 1-800-955-8770
www.floridajobs.org

- Private education and health services (+11,700 jobs, +1.1 percent) is the only sector gaining jobs among Florida's major industries. All of the increase is due to health care and social assistance (+14,400 jobs, +1.6 percent), primarily in nursing and residential care facilities. Private education declined by 2,700 jobs (-1.9 percent) over the year.

Local Area Unemployment Statistics (Not Seasonally Adjusted)

- In October 2009, Liberty County has the state's lowest unemployment rate (5.4 percent), followed by Monroe County (7.0 percent); Alachua and Leon counties (7.1 percent each); Jackson County (7.2%); and Lafayette and Walton counties (7.3 percent each). Many of the counties with the lowest unemployment rates are those with relatively high proportions of government employment.
- Flagler County (16.1 percent) has the highest unemployment rate in Florida in October 2009, followed by Hendry County (15.7 percent), Indian River County (14.9 percent), St. Lucie County (14.7 percent), and Hernando County (13.8 percent). The counties with high unemployment rates have either a high proportion of agricultural employees or continued weakness in construction and manufacturing.

Area Nonagricultural Employment (Not Seasonally Adjusted)

- All metro areas in the state lost jobs over the year in October 2009. Metro areas with the steepest declines include Naples-Marco Island (-7.3 percent, -8,900 jobs); Cape Coral-Ft. Myers (-6.8 percent, -14,300 jobs); Palm Coast (-6.6 percent, -1,200 jobs); Bradenton-Sarasota-Venice (-6.4 percent, -16,900 jobs); and Sebastian-Vero Beach (-6.3 percent, -2,900 jobs).

Note: These unemployment and job growth rates are estimates, which are primarily based on surveys created and mandated by the US Bureau of Labor Statistics in cooperation with the Florida Agency for Workforce Innovation.

The unemployment rate is derived from Florida household surveys conducted by the US Census Bureau under contract with the US Bureau of Labor Statistics. The job growth rate is derived from Florida employer surveys conducted by the US Bureau of Labor Statistics.

Both estimates are revised on a monthly basis. In addition, these estimates are benchmarked (revised) annually based on actual counts from Florida's Unemployment Compensation tax records and other data.

###

An equal opportunity employer/ program. Auxiliary aids and services are available upon request to individuals with disabilities. All voice telephone numbers on this document may be reached by persons using TTY/TDD equipment via the Florida Relay Service at 711.

The Agency for Workforce Innovation is Florida's lead workforce agency and directly administers the state's various workforce and unemployment programs and the Office of Early Learning. Workforce development policy and guidance are provided by Workforce Florida, Inc. Partnering together, along with the state's 24 Regional Workforce Boards that deliver services through nearly 90 One-Stop Career Centers around the state, they compose the Employ Florida network.

The next Florida Employment and Unemployment release will be on December 18, 2009 at 10:00 A.M.

Agency for Workforce Innovation

The Caldwell Building, Suite 100•107 East Madison Street•Tallahassee, Florida•32399-4120
Telephone (850) 245-7105•Fax (850) 921-3223•TTY/TDD 1-800-955-8771-Voice 1-800-955-8770

www.floridajobs.org

LABOR FORCE STATUS OF THE CIVILIAN NONINSTITUTIONAL POPULATION
RELEASE DATE: NOVEMBER 20, 2009

SEASONALLY ADJUSTED

	Current Month October 2009	Month Ago September 2009	Year Ago October 2008	Over-the-Month Change		Over-the-Year Change	
				Level	Percent	Level	Percent
				STATE OF FLORIDA			
Civilian Noninstitutional Population 16+	14,597,000	14,586,000	14,493,000	11,000	0.1	104,000	0.7
Civilian Labor Force	9,175,000	9,200,000	9,317,000	-25,000	-0.3	-142,000	-1.5
Employment	8,148,000	8,182,000	8,672,000	-34,000	-0.4	-524,000	-6.0
Unemployment	1,027,000	1,018,000	645,000	9,000	0.9	382,000	59.2
Unemployment Rate (%)	11.2	11.1	6.9	0.1	--	4.3	--

UNITED STATES

Civilian Noninstitutional Population 16+	236,550,000	236,322,000	234,612,000	228,000	0.1	1,938,000	0.8
Civilian Labor Force	153,975,000	154,006,000	154,878,000	-31,000	**	-903,000	-0.6
Employment	138,275,000	138,864,000	144,657,000	-589,000	-0.4	-6,382,000	-4.4
Unemployment	15,700,000	15,142,000	10,221,000	558,000	3.7	5,479,000	53.6
Unemployment Rate (%)	10.2	9.8	6.6	0.4	--	3.6	--

NOT SEASONALLY ADJUSTED

	Current Month October 2009	Month Ago September 2009	Year Ago October 2008	Over-the-Month Change		Over-the-Year Change	
				Level	Percent	Level	Percent
				STATE OF FLORIDA			
Civilian Noninstitutional Population 16+	14,597,000	14,586,000	14,493,000	11,000	0.1	104,000	0.7
Civilian Labor Force	9,192,000	9,228,000	9,313,000	-36,000	-0.4	-121,000	-1.3
Employment	8,161,000	8,187,000	8,652,000	-26,000	-0.3	-491,000	-5.7
Unemployment	1,031,000	1,041,000	661,000	-10,000	-1.0	370,000	56.0
Unemployment Rate (%)	11.2	11.3	7.1	-0.1	--	4.1	--

UNITED STATES

Civilian Noninstitutional Population 16+	236,550,000	236,322,000	234,612,000	228,000	0.1	1,938,000	0.8
Civilian Labor Force	153,635,000	153,617,000	155,012,000	18,000	**	-1,377,000	-0.9
Employment	139,088,000	139,079,000	145,543,000	9,000	**	-6,455,000	-4.4
Unemployment	14,547,000	14,538,000	9,469,000	9,000	0.1	5,078,000	53.6
Unemployment Rate (%)	9.5	9.5	6.1	0.0	--	3.4	--

** = Less than 0.05 percent

Note: All estimates except unemployment rates are rounded to the nearest thousand. Items may not add to totals or compute to displayed percentages due to rounding. All data are subject to revision.

Source: Florida Agency for Workforce Innovation, Labor Market Statistics Center, Local Area Unemployment Statistics Program, in cooperation with the U.S Department of Labor, Bureau of Labor Statistics.

Nonagricultural Employment in Florida
Seasonally Adjusted (in thousands)

	October ^P	September ^r	October	Over-the-Month		Over-the-Year	
	2009	2009	2008	Change	Percent	Change	Percent
				Level		Level	Percent
Total Nonagricultural Employment	7,340.2	7,348.7	7,679.8	-8.5	-0.1	-339.6	-4.4
Construction	413.2	420.8	487.3	-7.6	-1.8	-74.1	-15.2
Manufacturing	322.1	325.8	366.7	-3.7	-1.1	-44.6	-12.2
Trade, Transportation, and Utilities	1,474.5	1,477.6	1,560.6	-3.1	-0.2	-86.1	-5.5
Wholesale Trade	330.3	329.8	345.1	0.5	0.2	-14.8	-4.3
Retail Trade	915.2	921.0	977.4	-5.8	-0.6	-62.2	-6.4
Transportation, Warehousing, and Utilities	229.0	226.8	238.1	2.2	1.0	-9.1	-3.8
Information	145.2	143.7	151.9	1.5	1.0	-6.7	-4.4
Financial Activities	495.9	496.0	523.1	-0.1	*	-27.2	-5.2
Finance and Insurance	329.5	330.8	349.6	-1.3	-0.4	-20.1	-5.7
Real Estate, Rental, and Leasing	166.4	165.2	173.5	1.2	0.7	-7.1	-4.1
Professional and Business Services	1,055.3	1,057.3	1,130.4	-2.0	-0.2	-75.1	-6.6
Professional and Technical Services	438.2	434.1	449.0	4.1	0.9	-10.8	-2.4
Management of Companies and Enterprises	79.3	78.6	81.3	0.7	0.9	-2.0	-2.5
Administrative and Waste Services	537.8	544.6	600.1	-6.8	-1.2	-62.3	-10.4
Education and Health Services	1,066.2	1,056.0	1,054.5	10.2	1.0	11.7	1.1
Educational Services	136.6	135.6	139.3	1.0	0.7	-2.7	-1.9
Health Care and Social Assistance	929.6	920.4	915.2	9.2	1.0	14.4	1.6
Leisure and Hospitality	909.9	908.5	932.3	1.4	0.2	-22.4	-2.4
Arts, Entertainment, and Recreation	173.7	172.8	184.0	0.9	0.5	-10.3	-5.6
Accommodation and Food Services	736.2	735.7	748.3	0.5	0.1	-12.1	-1.6
Other Services	332.8	335.3	337.3	-2.5	-0.7	-4.5	-1.3
Total Government	1,119.1	1,121.6	1,129.4	-2.5	-0.2	-10.3	-0.9
Local Government	773.2	776.7	785.0	-3.5	-0.5	-11.8	-1.5

^P = preliminary, ^r = revised

* = less than 0.1 percent

Note: Sum of detail may not equal totals due to rounding or the exclusion of certain industries from publication. All data are subject to revision.

Released November 20, 2009.

Source: Florida Agency for Workforce Innovation, Labor Market Statistics Center, Current Employment Statistics Program in cooperation with the U.S. Department of Labor, Bureau of Labor Statistics.

**NONAGRICULTURAL EMPLOYMENT IN FLORIDA
STATEWIDE (Not Seasonally Adjusted)**

Released November 20, 2009

Industry Title	October 2009	September 2009	October 2008	Change from			
				Sep 2009 to Oct 2009 Level	Oct 2009 Percent	Oct 2008 to Oct 2009 Level	Oct 2008 to Oct 2009 Percent
Total Nonagricultural Employment	7,342,000	7,321,200	7,680,300	20,800	0.3%	-338,300	-4.4%
Total Private	6,201,300	6,188,400	6,529,100	12,900	0.2%	-327,800	-5.0%
Goods Producing	744,700	752,500	863,400	-7,800	-1.0%	-118,700	-13.8%
Mining and Logging	6,000	6,100	6,300	-100	-1.6%	-300	-4.8%
Mining, except Oil and Gas	3,600	3,600	3,800	0	0.0%	-200	-5.3%
Construction	416,300	419,900	490,200	-3,600	-0.9%	-73,900	-15.1%
Construction of Buildings	90,900	92,700	101,600	-1,800	-1.9%	-10,700	-10.5%
Heavy and Civil Engineering Construction	52,800	52,700	65,200	100	0.2%	-12,400	-19.0%
Specialty Trade Contractors	272,600	274,500	323,400	-1,900	-0.7%	-50,800	-15.7%
Building Equipment Contractors	118,300	118,400	137,200	-100	-0.1%	-18,900	-13.8%
Manufacturing	322,400	326,500	366,900	-4,100	-1.3%	-44,500	-12.1%
Durable Goods	215,700	220,400	248,300	-4,700	-2.1%	-32,600	-13.1%
Fabricated Metal Product Manufacturing	30,200	30,900	37,300	-700	-2.3%	-7,100	-19.0%
Computer and Electronic Product Manufacturing	46,000	46,100	47,300	-100	-0.2%	-1,300	-2.8%
Communications Equipment Manufacturing	7,900	7,900	8,300	0	0.0%	-400	-4.8%
Transportation Equipment Manufacturing	39,000	39,500	41,200	-500	-1.3%	-2,200	-5.3%
Aerospace Product and Parts Manufacturing	20,200	20,200	20,100	0	0.0%	100	0.5%
Miscellaneous Durable Goods Manufacturing	28,400	28,600	29,800	-200	-0.7%	-1,400	-4.7%
Nondurable Goods	106,700	106,100	118,600	600	0.6%	-11,900	-10.0%
Food Manufacturing	26,500	26,300	28,700	200	0.8%	-2,200	-7.7%
Beverage and Tobacco Product Manufacturing	10,300	10,300	10,800	0	0.0%	-500	-4.6%
Paper Manufacturing	9,100	9,100	10,000	0	0.0%	-900	-9.0%
Printing and Related Support Activities	17,700	17,800	21,100	-100	-0.6%	-3,400	-16.1%
Chemical Manufacturing	19,000	19,100	20,700	-100	-0.5%	-1,700	-8.2%

Source: Florida Agency for Workforce Innovation, Labor Market Statistics Center, Current Employment Statistics Program (in cooperation with the U.S. Department of Labor, Bureau of Labor Statistics).

**NONAGRICULTURAL EMPLOYMENT IN FLORIDA
STATEWIDE (Not Seasonally Adjusted)**

Released November 20, 2009

Industry Title	October 2009	September 2009	October 2008	Change from			
				Sep 2009 to Oct 2009 Level	Oct 2009 Percent	Oct 2008 to Oct 2009 Level	Oct 2008 to Oct 2009 Percent
Service Providing	6,597,300	6,568,700	6,816,900	28,600	0.4%	-219,600	-3.2%
Private Service Providing	5,456,600	5,435,900	5,665,700	20,700	0.4%	-209,100	-3.7%
Trade, Transportation, and Utilities	1,470,100	1,466,400	1,555,800	3,700	0.3%	-85,700	-5.5%
Wholesale Trade	330,800	329,600	345,600	1,200	0.4%	-14,800	-4.3%
Merchant Wholesalers, Durable Goods	168,100	168,700	178,700	-600	-0.4%	-10,600	-5.9%
Commercial Equipment Wholesalers	47,100	47,200	47,100	-100	-0.2%	0	0.0%
Electronic Goods Wholesalers	22,700	22,600	23,600	100	0.4%	-900	-3.8%
Machinery and Supply Wholesalers	30,600	30,800	32,500	-200	-0.7%	-1,900	-5.9%
Merchant Wholesalers, Nondurable Goods	117,900	115,800	120,900	2,100	1.8%	-3,000	-2.5%
Grocery and Related Product Wholesalers	42,900	42,800	45,800	100	0.2%	-2,900	-6.3%
Wholesale Electronic Markets and Agents	44,800	45,100	46,000	-300	-0.7%	-1,200	-2.6%
Retail Trade	909,500	910,100	971,200	-600	-0.1%	-61,700	-6.4%
Motor Vehicle and Parts Dealers	102,800	103,700	123,100	-900	-0.9%	-20,300	-16.5%
Automobile Dealers	65,600	67,200	79,100	-1,600	-2.4%	-13,500	-17.1%
Furniture and Home Furnishings Stores	32,900	32,500	38,900	400	1.2%	-6,000	-15.4%
Electronics and Appliance Stores	34,000	33,700	37,700	300	0.9%	-3,700	-9.8%
Building Material and Garden Supply Stores	70,500	71,200	74,400	-700	-1.0%	-3,900	-5.2%
Food and Beverage Stores	184,800	184,500	192,500	300	0.2%	-7,700	-4.0%
Health and Personal Care Stores	69,100	69,500	71,000	-400	-0.6%	-1,900	-2.7%
Gasoline Stations	35,800	36,000	37,200	-200	-0.6%	-1,400	-3.8%
Clothing and Accessory Stores	100,800	99,900	106,900	900	0.9%	-6,100	-5.7%
Sporting Goods, Hobby, Book, and Music Stores	32,100	32,900	34,900	-800	-2.4%	-2,800	-8.0%
General Merchandise Stores	177,200	176,800	181,500	400	0.2%	-4,300	-2.4%
Department Stores	76,500	76,300	80,100	200	0.3%	-3,600	-4.5%
Other General Merchandise Stores	100,700	100,500	101,400	200	0.2%	-700	-0.7%
Miscellaneous Store Retailers	48,400	48,300	50,900	100	0.2%	-2,500	-4.9%
Nonstore Retailers	21,100	21,100	22,200	0	0.0%	-1,100	-5.0%
Electronic Shopping and Mail-Order Houses	14,300	14,300	14,700	0	0.0%	-400	-2.7%
Transportation, Warehousing, and Utilities	229,800	226,700	239,000	3,100	1.4%	-9,200	-3.9%
Utilities	23,700	23,600	24,000	100	0.4%	-300	-1.3%

Source: Florida Agency for Workforce Innovation, Labor Market Statistics Center, Current Employment Statistics Program (in cooperation with the U.S. Department of Labor, Bureau of Labor Statistics).

**NONAGRICULTURAL EMPLOYMENT IN FLORIDA
STATEWIDE (Not Seasonally Adjusted)**

Released November 20, 2009

Industry Title	October 2009	September 2009	October 2008	Change from			
				Sep 2009 to Oct 2009 Level	Oct 2009 Percent	Oct 2008 to Oct 2009 Level	Oct 2008 Percent
Transportation and Warehousing	206,100	203,100	215,000	3,000	1.5%	-8,900	-4.1%
Air Transportation	30,300	30,300	30,900	0	0.0%	-600	-1.9%
Water Transportation	12,000	11,800	12,400	200	1.7%	-400	-3.2%
Truck Transportation	43,800	43,400	43,400	400	0.9%	400	0.9%
Support Activities for Transportation	40,600	40,100	48,400	500	1.3%	-7,800	-16.1%
Couriers and Messengers	29,900	29,600	29,600	300	1.0%	300	1.0%
Warehousing and Storage	27,500	27,600	28,300	-100	-0.4%	-800	-2.8%
Information	144,700	143,200	151,400	1,500	1.1%	-6,700	-4.4%
Publishing Industries, except Internet	35,700	35,900	39,000	-200	-0.6%	-3,300	-8.5%
Broadcasting, except Internet	13,200	13,300	15,000	-100	-0.8%	-1,800	-12.0%
Telecommunications	61,900	61,000	63,300	900	1.5%	-1,400	-2.2%
Wired Telecommunications Carriers	44,900	44,800	46,700	100	0.2%	-1,800	-3.9%
Internet Service Providers and Data Processing	15,300	15,500	16,900	-200	-1.3%	-1,600	-9.5%
Financial Activities	496,800	495,900	523,900	900	0.2%	-27,100	-5.2%
Finance and Insurance	330,000	330,600	350,100	-600	-0.2%	-20,100	-5.7%
Credit Intermediation and Related Activities	154,300	155,000	167,500	-700	-0.5%	-13,200	-7.9%
Depository Credit Intermediation	96,400	96,900	102,500	-500	-0.5%	-6,100	-6.0%
Insurance Carriers and Related Activities	132,200	132,600	134,600	-400	-0.3%	-2,400	-1.8%
Insurance Carriers	72,300	72,500	72,800	-200	-0.3%	-500	-0.7%
Insurance Agencies, Brokerages, and Related	59,900	60,100	61,800	-200	-0.3%	-1,900	-3.1%
Real Estate, Rental, and Leasing	166,800	165,300	173,800	1,500	0.9%	-7,000	-4.0%
Real Estate	124,500	122,600	128,000	1,900	1.6%	-3,500	-2.7%
Professional and Business Services	1,053,300	1,052,900	1,128,000	400	0.0%	-74,700	-6.6%
Professional and Technical Services	437,500	431,200	448,300	6,300	1.5%	-10,800	-2.4%
Legal Services	86,100	86,700	90,600	-600	-0.7%	-4,500	-5.0%
Accounting, Tax Preparation, and Bookkeeping	57,400	55,900	52,400	1,500	2.7%	5,000	9.5%
Architectural, Engineering, and Related	73,600	72,200	81,200	1,400	1.9%	-7,600	-9.4%
Computer Systems Design and Related	64,200	63,700	64,300	500	0.8%	-100	-0.2%
Management, Scientific, and Technical	69,600	68,000	69,900	1,600	2.4%	-300	-0.4%
Management of Companies and Enterprises	79,800	79,200	81,800	600	0.8%	-2,000	-2.4%

Source: Florida Agency for Workforce Innovation, Labor Market Statistics Center, Current Employment Statistics Program (in cooperation with the U.S. Department of Labor, Bureau of Labor Statistics).

**NONAGRICULTURAL EMPLOYMENT IN FLORIDA
STATEWIDE (Not Seasonally Adjusted)**

Released November 20, 2009

Industry Title	October 2009	September 2009	October 2008	Change from			
				Sep 2009 to Oct 2009 Level	Oct 2009 Percent	Oct 2008 to Oct 2009 Level	Oct 2008 Percent
Administrative and Waste Services	536,000	542,500	597,900	-6,500	-1.2%	-61,900	-10.4%
Administrative and Support Services	515,000	521,600	577,100	-6,600	-1.3%	-62,100	-10.8%
Employment Services	184,400	185,200	214,200	-800	-0.4%	-29,800	-13.9%
Business Support Services	61,600	61,500	65,100	100	0.2%	-3,500	-5.4%
Travel Arrangement and Reservation Services	29,100	29,100	32,400	0	0.0%	-3,300	-10.2%
Investigation and Security Services	63,000	62,900	62,800	100	0.2%	200	0.3%
Services to Buildings and Dwellings	138,100	139,800	139,900	-1,700	-1.2%	-1,800	-1.3%
Waste Management and Remediation Services	21,000	20,900	20,800	100	0.5%	200	1.0%
Education and Health Services	1,069,900	1,055,100	1,058,200	14,800	1.4%	11,700	1.1%
Educational Services	139,300	135,300	142,000	4,000	3.0%	-2,700	-1.9%
Elementary and Secondary Schools	46,200	45,800	47,800	400	0.9%	-1,600	-3.4%
Colleges and Universities	52,200	50,600	53,700	1,600	3.2%	-1,500	-2.8%
Health Care and Social Assistance	930,600	919,800	916,200	10,800	1.2%	14,400	1.6%
Ambulatory Health Care Services	382,500	375,800	377,200	6,700	1.8%	5,300	1.4%
Offices of Physicians	173,900	170,800	173,100	3,100	1.8%	800	0.5%
Home Health Care Services	57,300	56,300	57,100	1,000	1.8%	200	0.4%
Hospitals	253,900	253,000	253,200	900	0.4%	700	0.3%
Nursing and Residential Care Facilities	179,800	178,100	173,100	1,700	1.0%	6,700	3.9%
Nursing Care Facilities	101,000	100,400	98,000	600	0.6%	3,000	3.1%
Community Care for the Elderly	46,200	46,100	45,400	100	0.2%	800	1.8%
Social Assistance	114,400	112,900	112,700	1,500	1.3%	1,700	1.5%
Leisure and Hospitality	889,500	888,700	911,600	800	0.1%	-22,100	-2.4%
Arts, Entertainment, and Recreation	169,800	167,300	180,000	2,500	1.5%	-10,200	-5.7%
Amusement, Gambling, and Recreation	130,300	129,100	141,600	1,200	0.9%	-11,300	-8.0%
Amusement Parks and Arcades	56,300	55,800	57,700	500	0.9%	-1,400	-2.4%
Accommodation and Food Services	719,700	721,400	731,600	-1,700	-0.2%	-11,900	-1.6%
Accommodation	145,900	147,900	153,400	-2,000	-1.4%	-7,500	-4.9%
Food Services and Drinking Places	573,800	573,500	578,200	300	0.1%	-4,400	-0.8%

Source: Florida Agency for Workforce Innovation, Labor Market Statistics Center, Current Employment Statistics Program (in cooperation with the U.S. Department of Labor, Bureau of Labor Statistics).

**NONAGRICULTURAL EMPLOYMENT IN FLORIDA
STATEWIDE (Not Seasonally Adjusted)**

Released November 20, 2009

Industry Title	October 2009	September 2009	October 2008	Change from			
				Sep 2009 to Oct 2009 Level	Oct 2009 Percent	Oct 2008 to Oct 2009 Level	Oct 2009 Percent
Other Services	332,300	333,700	336,800	-1,400	-0.4%	-4,500	-1.3%
Repair and Maintenance	67,900	66,800	70,800	1,100	1.7%	-2,900	-4.1%
Automotive Repair and Maintenance	44,600	44,400	46,900	200	0.5%	-2,300	-4.9%
Personal and Laundry Services	80,000	80,600	83,300	-600	-0.7%	-3,300	-4.0%
Membership Associations and Organizations	184,400	186,300	182,700	-1,900	-1.0%	1,700	0.9%
Total Government	1,140,700	1,132,800	1,151,200	7,900	0.7%	-10,500	-0.9%
Federal	130,700	128,900	130,800	1,800	1.4%	-100	-0.1%
State	220,000	217,300	218,400	2,700	1.2%	1,600	0.7%
Local	790,000	786,600	802,000	3,400	0.4%	-12,000	-1.5%

Note: Employment estimates have been rounded to the nearest hundred. Sum of detail may not equal totals due to rounding or the exclusion of certain industries from publication. All data are subject to revision.

STATE OF FLORIDA
LOCAL AREA UNEMPLOYMENT STATISTICS BY COUNTY
(NOT SEASONALLY ADJUSTED)

COUNTY	OCTOBER 2009				SEPTEMBER 2009				OCTOBER 2008			
	LABOR FORCE	EMPLOY- MENT	UNEMPLOYMENT LEVEL	RATE (%)	LABOR FORCE	EMPLOY- MENT	UNEMPLOYMENT LEVEL	RATE (%)	LABOR FORCE	EMPLOY- MENT	UNEMPLOYMENT LEVEL	RATE (%)
ALACHUA	132735	123310	9425	7.1	132512	123106	9406	7.1	135591	129408	6183	4.6
BAKER	12130	10786	1344	11.1	12211	10826	1385	11.3	12198	11453	745	6.1
BAY	87315	79057	8258	9.5	88279	80287	7992	9.1	89310	83845	5465	6.1
BRADFORD	12753	11700	1053	8.3	12882	11788	1094	8.5	12793	12129	664	5.2
BREVARD	265071	234904	30167	11.4	266060	236069	29991	11.3	269054	248621	20433	7.6
BROWARD	1002288	905520	96768	9.7	1009665	910335	99330	9.8	1017387	955010	62377	6.1
CALHOUN	6122	5601	521	8.5	6090	5580	510	8.4	6037	5722	315	5.2
CHARLOTTE	68597	59880	8717	12.7	68925	60117	8808	12.8	69370	62837	6533	9.4
CITRUS	59126	52044	7082	12.0	59385	52135	7250	12.2	58751	53579	5172	8.8
CLAY	94302	85028	9274	9.8	94676	85349	9327	9.9	95945	90291	5654	5.9
COLLIER	144777	126768	18009	12.4	144287	125380	18907	13.1	151343	139230	12113	8.0
COLUMBIA	33520	30338	3182	9.5	33565	30527	3038	9.1	32755	30823	1932	5.9
DESOTO	15083	13326	1757	11.6	15104	13337	1767	11.7	14937	13667	1270	8.5
DIXIE	5604	4927	677	12.1	5698	4987	711	12.5	5649	5204	445	7.9
DUVAL	447145	397229	49916	11.2	449436	398730	50706	11.3	452830	421817	31013	6.8
ESCAMBIA	139813	126003	13810	9.9	140581	126789	13792	9.8	141764	132582	9182	6.5
FLAGLER	31189	26178	5011	16.1	31348	26279	5069	16.2	31980	28615	3365	10.5
FRANKLIN	4573	4216	357	7.8	4672	4339	333	7.1	4684	4467	217	4.6
GADSDEN	21272	19268	2004	9.4	21313	19280	2033	9.5	21737	20224	1513	7.0
GILCHRIST	8023	7214	809	10.1	7999	7202	797	10.0	8076	7570	506	6.3
GLADES	4965	4506	459	9.2	5098	4585	513	10.1	5049	4665	384	7.6
GULF	6268	5649	619	9.9	6434	5804	630	9.8	6310	5901	409	6.5
HAMILTON	4928	4364	564	11.4	4945	4396	549	11.1	4941	4545	396	8.0
HARDEE	12031	10553	1478	12.3	12077	10552	1525	12.6	12238	11200	1038	8.5
HENDRY	18151	15309	2842	15.7	18308	15247	3061	16.7	18607	16256	2351	12.6
HERNANDO	62727	54063	8664	13.8	63192	54380	8812	13.9	64020	57826	6194	9.7
HIGHLANDS	41682	36916	4766	11.4	41890	37021	4869	11.6	41395	37954	3441	8.3
HILLSBOROUGH	600796	531270	69526	11.6	604529	534388	70141	11.6	611518	568248	43270	7.1
HOLMES	9267	8576	691	7.5	9347	8669	678	7.3	9292	8806	486	5.2
INDIAN RIVER	60794	51756	9038	14.9	61041	51715	9326	15.3	61648	55886	5762	9.3
JACKSON	22572	20943	1629	7.2	22689	21064	1625	7.2	22731	21504	1227	5.4
JEFFERSON	6936	6327	609	8.8	6915	6331	584	8.4	7037	6641	396	5.6
LAFAYETTE	3141	2912	229	7.3	3180	2952	228	7.2	3083	2933	150	4.9
LAKE	135004	118642	16362	12.1	135765	119069	16696	12.3	136649	126561	10088	7.4
LEE	271900	234747	37153	13.7	272462	234622	37840	13.9	283696	256822	26874	9.5
LEON	146612	136194	10418	7.1	146814	136279	10535	7.2	150204	142949	7255	4.8
LEVY	17242	15256	1986	11.5	17353	15241	2112	12.2	17502	16188	1314	7.5
LIBERTY	4119	3897	222	5.4	4098	3879	219	5.3	4079	3893	186	4.6

PAGE 1 OF 2

SOURCE: Florida Agency for Workforce Innovation, Labor Market Statistics Center, Local Area Unemployment Statistics Program, in cooperation with the U.S. Department of Labor, Bureau of Labor Statistics.

STATE OF FLORIDA
LOCAL AREA UNEMPLOYMENT STATISTICS BY COUNTY
(NOT SEASONALLY ADJUSTED)

COUNTY	OCTOBER 2009				SEPTEMBER 2009				OCTOBER 2008			
	LABOR FORCE	EMPLOY- MENT	UNEMPLOYMENT LEVEL	RATE (%)	LABOR FORCE	EMPLOY- MENT	UNEMPLOYMENT LEVEL	RATE (%)	LABOR FORCE	EMPLOY- MENT	UNEMPLOYMENT LEVEL	RATE (%)
MADISON	6977	6154	823	11.8	6997	6169	828	11.8	7029	6484	545	7.8
MANATEE	142602	124981	17621	12.4	143606	125390	18216	12.7	147639	135863	11776	8.0
MARION	138881	120332	18549	13.4	139343	120700	18643	13.4	141048	128582	12466	8.8
MARTIN	63782	56253	7529	11.8	63625	56065	7560	11.9	64558	59361	5197	8.1
MIAMI-DADE	1241081	1095235	145846	11.8	1233344	1092805	140539	11.4	1225317	1144612	80705	6.6
MONROE	46986	43685	3301	7.0	47388	44073	3315	7.0	47042	44760	2282	4.9
NASSAU	35654	31947	3707	10.4	36004	32068	3936	10.9	36103	33925	2178	6.0
OKALOOSA	95554	88507	7047	7.4	96516	89502	7014	7.3	98261	93291	4970	5.1
OKEECHOBEE	18285	15889	2396	13.1	18513	16059	2454	13.3	18248	16437	1811	9.9
ORANGE	601081	533629	67452	11.2	604858	535547	69311	11.5	610749	569247	41502	6.8
OSCEOLA	136122	118644	17478	12.8	136580	119071	17509	12.8	136975	126564	10411	7.6
PALM BEACH	625551	553996	71555	11.4	628705	554918	73787	11.7	633224	585263	47961	7.6
PASCO	195321	170917	24404	12.5	196860	171920	24940	12.7	199470	182813	16657	8.4
PINELLAS	452572	401910	50662	11.2	455672	404268	51404	11.3	463535	429884	33651	7.3
POLK	272560	238440	34120	12.5	274703	239610	35093	12.8	275737	253878	21859	7.9
PUTNAM	33398	29198	4200	12.6	33442	29345	4097	12.3	33274	30543	2731	8.2
ST. JOHNS	92431	84001	8430	9.1	92742	84318	8424	9.1	94658	89200	5458	5.8
ST. LUCIE	124040	105754	18286	14.7	124391	105400	18991	15.3	124369	111598	12771	10.3
SANTA ROSA	68911	62493	6418	9.3	69501	62883	6618	9.5	70006	65756	4250	6.1
SARASOTA	164830	144785	20045	12.2	165600	145260	20340	12.3	171205	157392	13813	8.1
SEMINOLE	239627	214525	25102	10.5	240941	215296	25645	10.6	244382	228844	15538	6.4
SUMTER	32087	29152	2935	9.1	32632	29672	2960	9.1	32108	30191	1917	6.0
SUWANNEE	18050	16248	1802	10.0	18113	16329	1784	9.8	18104	16980	1124	6.2
TAYLOR	9216	8248	968	10.5	9431	8413	1018	10.8	9189	8535	654	7.1
UNION	5342	4890	452	8.5	5371	4919	452	8.4	5317	5044	273	5.1
VOLUSIA	252514	223000	29514	11.7	253496	223851	29645	11.7	254982	235760	19222	7.5
WAKULLA	15397	14219	1178	7.7	15368	14228	1140	7.4	15755	14924	831	5.3
WALTON	32016	29693	2323	7.3	32895	30643	2252	6.8	32000	30459	1541	4.8
WASHINGTON	10069	9084	985	9.8	10179	9204	975	9.6	10122	9457	665	6.6
FLORIDA												
NOT SEASONALLY ADJUSTED												
	9192000	8161000	1031000	11.2	9228000	8187000	1041000	11.3	9313000	8652000	661000	7.1
SEASONALLY ADJUSTED												
	9175000	8148000	1027000	11.2	9200000	8182000	1018000	11.1	9317000	8672000	645000	6.9
UNITED STATES												
NOT SEASONALLY ADJUSTED												
	153635000	139088000	14547000	9.5	153617000	139079000	14538000	9.5	155012000	145543000	9469000	6.1
SEASONALLY ADJUSTED												
	153975000	138275000	15700000	10.2	154006000	138864000	15142000	9.8	154878000	144657000	10221000	6.6

PAGE 2 OF 2

RELEASED NOVEMBER 20, 2009

NOTE: Items may not add to totals or compute to displayed percentages due to rounding. All data are subject to revision.

SOURCE: Florida Agency for Workforce Innovation, Labor Market Statistics Center, Local Area Unemployment Statistics Program, in cooperation with the U.S. Department of Labor, Bureau of Labor Statistics.

STATE OF FLORIDA
LOCAL AREA UNEMPLOYMENT STATISTICS BY METROPOLITAN STATISTICAL AREA (MSA)
(NOT SEASONALLY ADJUSTED)

MSA (COUNTIES)	OCTOBER 2009				SEPTEMBER 2009				OCTOBER 2008			
	LABOR FORCE	EMPLOY- MENT	UNEMPLOYMENT LEVEL	UNEMPLOYMENT RATE (%)	LABOR FORCE	EMPLOY- MENT	UNEMPLOYMENT LEVEL	UNEMPLOYMENT RATE (%)	LABOR FORCE	EMPLOY- MENT	UNEMPLOYMENT LEVEL	UNEMPLOYMENT RATE (%)
BRADENTON-SARASOTA-VENICE (Manatee and Sarasota)	307432	269766	37666	12.3	309206	270650	38556	12.5	318844	293255	25589	8.0
CAPE CORAL-FT. MYERS (Lee)	271900	234747	37153	13.7	272462	234622	37840	13.9	283696	256822	26874	9.5
DELTONA-DAYTONA BEACH-ORMOND BEACH (Volusia)	252514	223000	29514	11.7	253496	223851	29645	11.7	254982	235760	19222	7.5
FT. WALTON BEACH-CRESTVIEW-DESTIN (Okaloosa)	95554	88507	7047	7.4	96516	89502	7014	7.3	98261	93291	4970	5.1
GAINESVILLE (Alachua and Gilchrist)	140758	130524	10234	7.3	140511	130308	10203	7.3	143667	136978	6689	4.7
JACKSONVILLE (Baker, Clay, Duval, Nassau, and St. Johns)	681663	608991	72672	10.7	685070	611292	73778	10.8	691735	646686	45049	6.5
LAKELAND-WINTER HAVEN (Polk)	272560	238440	34120	12.5	274703	239610	35093	12.8	275737	253878	21859	7.9
MIAMI-FT. LAUDERDALE-POMPANO BEACH (Broward, Miami-Dade, and Palm Beach)	2868920	2554751	314169	11.0	2871714	2558058	313656	10.9	2875928	2684885	191043	6.6
Ft. Lauderdale-Pompano Beach-Deerfield Beach Metropolitan Division (Broward)	1002288	905520	96768	9.7	1009665	910335	99330	9.8	1017387	955010	62377	6.1
Miami-Miami Beach-Kendall Metropolitan Division (Miami-Dade)	1241081	1095235	145846	11.8	1233344	1092805	140539	11.4	1225317	1144612	80705	6.6
West Palm Beach-Boca Raton-Boynton Beach Metropolitan Division (Palm Beach)	625551	553996	71555	11.4	628705	554918	73787	11.7	633224	585263	47961	7.6
NAPLES-MARCO ISLAND (Collier)	144777	126768	18009	12.4	144287	125380	18907	13.1	151343	139230	12113	8.0
OCALA (Marion)	138881	120332	18549	13.4	139343	120700	18643	13.4	141048	128582	12466	8.8
ORLANDO-KISSIMMEE (Lake, Orange, Osceola, and Seminole)	1111834	985440	126394	11.4	1118144	988983	129161	11.6	1128755	1051216	77539	6.9
PALM BAY-MELBOURNE-TITUSVILLE (Brevard)	265071	234904	30167	11.4	266060	236069	29991	11.3	269054	248621	20433	7.6
PALM COAST (Flagler)	31189	26178	5011	16.1	31348	26279	5069	16.2	31980	28615	3365	10.5
PANAMA CITY-LYNN HAVEN-PANAMA CITY BEACH (Bay)	87315	79057	8258	9.5	88279	80287	7992	9.1	89310	83845	5465	6.1
PENSACOLA-FERRY PASS-BRENT (Escambia and Santa Rosa)	208724	188496	20228	9.7	210082	189672	20410	9.7	211770	198338	13432	6.3
PORT ST. LUCIE (Martin and St. Lucie)	187822	162007	25815	13.7	188016	161465	26551	14.1	188927	170959	17968	9.5
PUNTA GORDA (Charlotte)	68597	59880	8717	12.7	68925	60117	8808	12.8	69370	62837	6533	9.4
SEBASTIAN-VERO BEACH (Indian River)	60794	51756	9038	14.9	61041	51715	9326	15.3	61648	55886	5762	9.3
TALLAHASSEE (Gadsden, Jefferson, Leon, and Wakulla)	190217	176008	14209	7.5	190410	176118	14292	7.5	194733	184738	9995	5.1
TAMPA-ST. PETERSBURG-CLEARWATER (Hernando, Hillsborough, Pasco, and Pinellas)	1311416	1158160	153256	11.7	1320254	1164956	155298	11.8	1338544	1238772	99772	7.5
FLORIDA												
NOT SEASONALLY ADJUSTED	9192000	8161000	1031000	11.2	9228000	8187000	1041000	11.3	9313000	8652000	661000	7.1
SEASONALLY ADJUSTED	9175000	8148000	1027000	11.2	9200000	8182000	1018000	11.1	9317000	8672000	645000	6.9
UNITED STATES												
NOT SEASONALLY ADJUSTED	153635000	139088000	14547000	9.5	153617000	139079000	14538000	9.5	155012000	145543000	9469000	6.1
SEASONALLY ADJUSTED	153975000	138275000	15700000	10.2	154006000	138864000	15142000	9.8	154878000	144657000	10221000	6.6

RELEASED NOVEMBER 20, 2009

NOTE: Items may not add to totals or compute to displayed percentages due to rounding. All data are subject to revision.

SOURCE: Florida Agency for Workforce Innovation, Labor Market Statistics Center, Local Area Unemployment Statistics Program, in cooperation with the U.S. Department of Labor, Bureau of Labor Statistics.

STATE OF FLORIDA
COUNTIES RANKED BY UNEMPLOYMENT RATE
(NOT SEASONALLY ADJUSTED)

OCTOBER 2009
(PRELIMINARY)

RELEASED 11/20/2009

UNEMPLOYMENT			UNEMPLOYMENT		
RANK	COUNTY	RATE (%)	RANK	COUNTY	RATE (%)
1	FLAGLER	16.1	35	BAKER	11.1
2	HENDRY	15.7	36	TAYLOR	10.5
3	INDIAN RIVER	14.9	37	SEMINOLE	10.5
4	ST. LUCIE	14.7	38	NASSAU	10.4
5	HERNANDO	13.8	39	GILCHRIST	10.1
6	LEE	13.7	40	SUWANNEE	10.0
7	MARION	13.4	41	ESCAMBIA	9.9
8	OKEECHOBEE	13.1	42	GULF	9.9
9	OSCEOLA	12.8	43	CLAY	9.8
10	CHARLOTTE	12.7	44	WASHINGTON	9.8
11	PUTNAM	12.6	45	BROWARD	9.7
12	POLK	12.5	46	COLUMBIA	9.5
13	PASCO	12.5	47	BAY	9.5
14	COLLIER	12.4		UNITED STATES	9.5
15	MANATEE	12.4	48	GADSDEN	9.4
16	HARDEE	12.3	49	SANTA ROSA	9.3
17	SARASOTA	12.2	50	GLADES	9.2
18	LAKE	12.1	51	SUMTER	9.1
19	DIXIE	12.1	52	ST. JOHNS	9.1
20	CITRUS	12.0	53	JEFFERSON	8.8
21	MARTIN	11.8	54	CALHOUN	8.5
22	MADISON	11.8	55	UNION	8.5
23	MIAMI-DADE	11.8	56	BRADFORD	8.3
24	VOLUSIA	11.7	57	FRANKLIN	7.8
25	DESOTO	11.6	58	WAKULLA	7.7
26	HILLSBOROUGH	11.6	59	HOLMES	7.5
27	LEVY	11.5	60	OKALOOSA	7.4
28	HAMILTON	11.4	61	LAFAYETTE	7.3
29	PALM BEACH	11.4	62	WALTON	7.3
30	HIGHLANDS	11.4	63	JACKSON	7.2
31	BREVARD	11.4	64	LEON	7.1
32	ORANGE	11.2	65	ALACHUA	7.1
33	PINELLAS	11.2	66	MONROE	7.0
34	DUVAL	11.2	67	LIBERTY	5.4
	FLORIDA	11.2			

NOTE: All data are subject to revision.

Source: Florida Agency for Workforce Innovation, Labor Market Statistics Center, Local Area Unemployment Statistics Program, in cooperation with the U.S. Department of Labor, Bureau of Labor Statistics.

STATE OF FLORIDA
 METROPOLITAN STATISTICAL AREAS (MSAs) AND METROPOLITAN DIVISIONS (MDs)
 RANKED BY UNEMPLOYMENT RATE
 (NOT SEASONALLY ADJUSTED)
 OCTOBER 2009 (Preliminary)

1. Palm Coast MSA	16.1 %
2. Sebastian-Vero Beach MSA	14.9
3. Port St. Lucie MSA	13.7
4. Cape Coral-Ft. Myers MSA	13.7
5. Ocala MSA	13.4
6. Punta Gorda MSA	12.7
7. Lakeland-Winter Haven MSA	12.5
8. Naples-Marco Island MSA	12.4
9. Bradenton-Sarasota-Venice MSA	12.3
10. Miami-Miami Beach-Kendall MD	11.8
11. Deltona-Daytona Beach-Ormond Beach MSA	11.7
12. Tampa-St. Petersburg-Clearwater MSA	11.7
13. West Palm Beach-Boca Raton-Boynton Beach MD	11.4
14. Palm Bay-Melbourne-Titusville MSA	11.4
15. Orlando-Kissimmee MSA	11.4
Florida	11.2
16. Miami-Ft. Lauderdale-Pompano Beach MSA	11.0
17. Jacksonville MSA	10.7
18. Pensacola-Ferry Pass-Brent MSA	9.7
19. Ft. Lauderdale-Pompano Beach-Deerfield Beach MD	9.7
20. Panama City-Lynn Haven-Panama City Beach MSA	9.5
United States	9.5
21. Tallahassee MSA	7.5
22. Ft. Walton Beach-Crestview-Destin MSA	7.4
23. Gainesville MSA	7.3

Released November 20, 2009

NOTE: All data are subject to revision.

Source: Florida Agency for Workforce Innovation, Labor Market Statistics Center, Local Area Unemployment Statistics Program, in cooperation with the U.S. Department of Labor, Bureau of Labor Statistics.

TOTAL NONAGRICULTURAL EMPLOYMENT
FLORIDA (Not Seasonally Adjusted)

Area	October 2009	September 2009	October 2008	Over-the-Month Change		Over-the-Year Change	
				Level	Percent	Level	Percent
Statewide	7,342,000	7,321,200	7,680,300	+20,800	+0.3%	-338,300	-4.4%
Bradenton-Sarasota-Venice MSA	247,800	247,900	264,700	-100	**	-16,900	-6.4%
Cape Coral-Ft. Myers MSA	194,700	193,200	209,000	+1,500	+0.8%	-14,300	-6.8%
Deltona-Daytona Beach-Ormond Beach MSA	158,600	158,600	163,700	+0	+0.0%	-5,100	-3.1%
Ft. Lauderdale-Pompano Beach-Deerfield Beach MD	737,300	737,000	764,100	+300	**	-26,800	-3.5%
Ft. Walton Beach-Crestview-Destin MSA	78,800	79,200	81,600	-400	-0.5%	-2,800	-3.4%
Gainesville MSA	133,000	132,300	136,600	+700	+0.5%	-3,600	-2.6%
Jacksonville MSA	591,900	591,900	615,200	+0	+0.0%	-23,300	-3.8%
Lakeland-Winter Haven MSA	197,700	198,000	206,500	-300	-0.2%	-8,800	-4.3%
Miami-Ft. Lauderdale-Pompano Beach MSA	2,267,600	2,264,400	2,340,900	+3,200	+0.1%	-73,300	-3.1%
Miami-Miami Beach-Kendall MD	1,011,400	1,010,200	1,040,100	+1,200	+0.1%	-28,700	-2.8%
Naples-Marco Island MSA	112,600	111,300	121,500	+1,300	+1.2%	-8,900	-7.3%
Ocala MSA	97,100	97,000	101,800	+100	+0.1%	-4,700	-4.6%
Orlando-Kissimmee MSA	1,017,500	1,015,700	1,065,300	+1,800	+0.2%	-47,800	-4.5%
Palm Bay-Melbourne-Titusville MSA	196,600	197,000	203,700	-400	-0.2%	-7,100	-3.5%
Palm Coast MSA	17,000	16,900	18,200	+100	+0.6%	-1,200	-6.6%
Panama City-Lynn Haven-Panama City Beach MSA	72,000	72,900	74,900	-900	-1.2%	-2,900	-3.9%
Pensacola-Ferry Pass-Brent MSA	160,800	161,400	165,800	-600	-0.4%	-5,000	-3.0%
Port St. Lucie MSA	121,500	121,000	125,500	+500	+0.4%	-4,000	-3.2%
Punta Gorda MSA	40,400	40,300	41,300	+100	+0.2%	-900	-2.2%
Sebastian-Vero Beach MSA	43,200	43,100	46,100	+100	+0.2%	-2,900	-6.3%
Tallahassee MSA	173,100	172,700	177,100	+400	+0.2%	-4,000	-2.3%
Tampa-St. Petersburg-Clearwater MSA	1,157,200	1,158,000	1,215,700	-800	-0.1%	-58,500	-4.8%
West Palm Beach-Boca Raton-Boynton Beach MD	518,900	517,200	536,700	+1,700	+0.3%	-17,800	-3.3%

** = Less than 0.05 percent

Note: Employment estimates have been rounded to the nearest hundred. Sum of detail may not equal totals due to rounding or the exclusion of certain industries from publication. All data are subject to revision. Released November 20, 2009.

Source: Florida Agency for Workforce Innovation, Labor Market Statistics Center, Current Employment Statistics Program (in cooperation with the U.S. Department of Labor, Bureau of Labor Statistics).