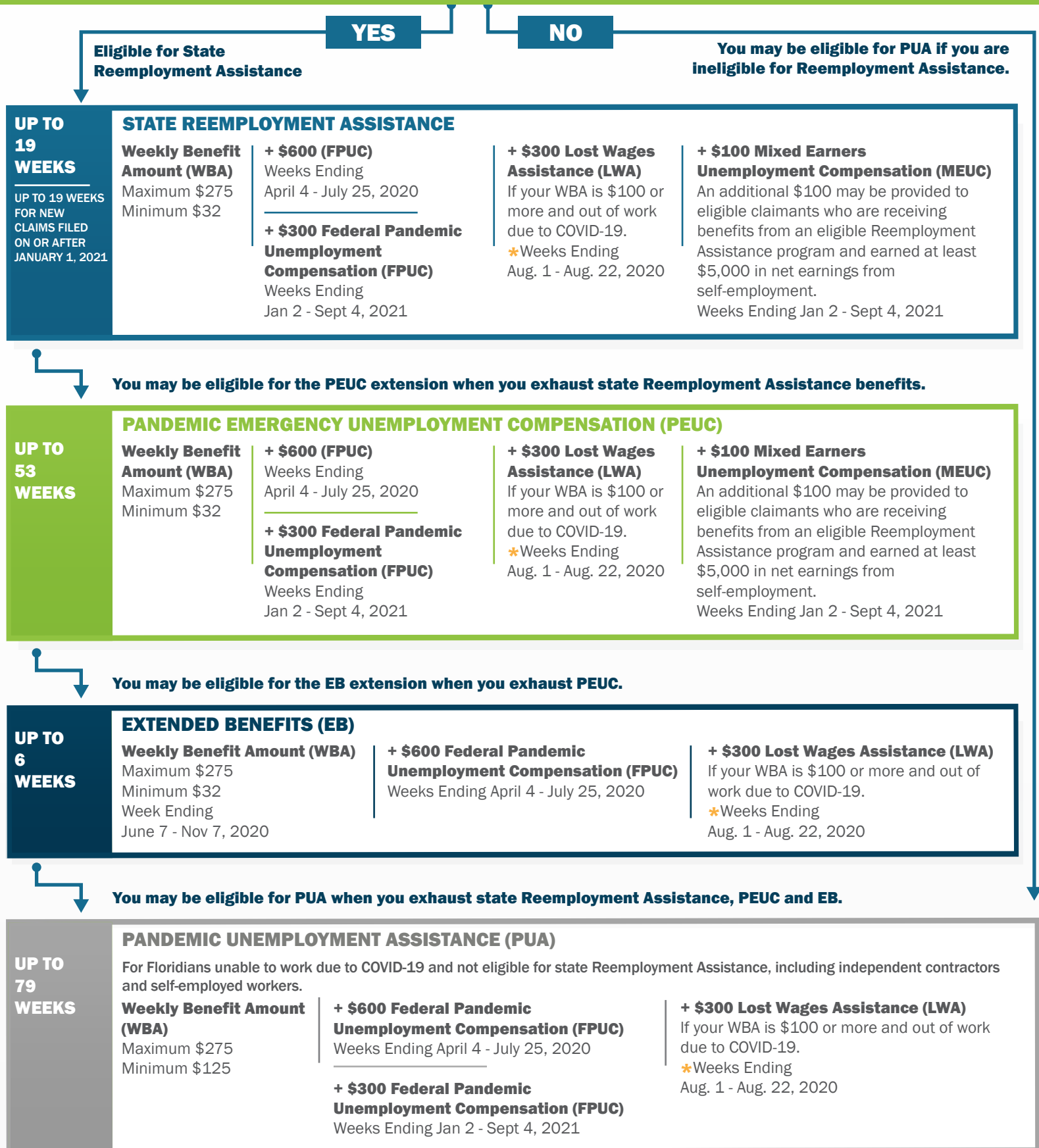


# Florida Reemployment Assistance Benefit Programs

Are You Eligible for State Reemployment Assistance Benefits? Apply at [FloridaJobs.org](https://www.floridajobs.org)

You may be eligible for state Reemployment Assistance benefits and extensions if:

- You are out of work due to no fault of your own.
- You meet requirements for wage and work history.
- You are unemployed or partially unemployed and are earning less than your weekly benefit amount.



**Eligible for State Reemployment Assistance**

**YES**

**NO**

**You may be eligible for PUA if you are ineligible for Reemployment Assistance.**

**UP TO 19 WEEKS**

UP TO 19 WEEKS FOR NEW CLAIMS FILED ON OR AFTER JANUARY 1, 2021

## STATE REEMPLOYMENT ASSISTANCE

**Weekly Benefit Amount (WBA)**  
Maximum \$275  
Minimum \$32

**+ \$600 (FPUC)**  
Weeks Ending April 4 - July 25, 2020

**+ \$300 Federal Pandemic Unemployment Compensation (FPUC)**  
Weeks Ending Jan 2 - Sept 4, 2021

**+ \$300 Lost Wages Assistance (LWA)**  
If your WBA is \$100 or more and out of work due to COVID-19.  
\*Weeks Ending Aug. 1 - Aug. 22, 2020

**+ \$100 Mixed Earners Unemployment Compensation (MEUC)**  
An additional \$100 may be provided to eligible claimants who are receiving benefits from an eligible Reemployment Assistance program and earned at least \$5,000 in net earnings from self-employment.  
Weeks Ending Jan 2 - Sept 4, 2021

**You may be eligible for the PEUC extension when you exhaust state Reemployment Assistance benefits.**

**UP TO 53 WEEKS**

## PANDEMIC EMERGENCY UNEMPLOYMENT COMPENSATION (PEUC)

**Weekly Benefit Amount (WBA)**  
Maximum \$275  
Minimum \$32

**+ \$600 (FPUC)**  
Weeks Ending April 4 - July 25, 2020

**+ \$300 Federal Pandemic Unemployment Compensation (FPUC)**  
Weeks Ending Jan 2 - Sept 4, 2021

**+ \$300 Lost Wages Assistance (LWA)**  
If your WBA is \$100 or more and out of work due to COVID-19.  
\*Weeks Ending Aug. 1 - Aug. 22, 2020

**+ \$100 Mixed Earners Unemployment Compensation (MEUC)**  
An additional \$100 may be provided to eligible claimants who are receiving benefits from an eligible Reemployment Assistance program and earned at least \$5,000 in net earnings from self-employment.  
Weeks Ending Jan 2 - Sept 4, 2021

**You may be eligible for the EB extension when you exhaust PEUC.**

**UP TO 6 WEEKS**

## EXTENDED BENEFITS (EB)

**Weekly Benefit Amount (WBA)**  
Maximum \$275  
Minimum \$32  
Week Ending June 7 - Nov 7, 2020

**+ \$600 Federal Pandemic Unemployment Compensation (FPUC)**  
Weeks Ending April 4 - July 25, 2020

**+ \$300 Lost Wages Assistance (LWA)**  
If your WBA is \$100 or more and out of work due to COVID-19.  
\*Weeks Ending Aug. 1 - Aug. 22, 2020

**You may be eligible for PUA when you exhaust state Reemployment Assistance, PEUC and EB.**

**UP TO 79 WEEKS**

## PANDEMIC UNEMPLOYMENT ASSISTANCE (PUA)

For Floridians unable to work due to COVID-19 and not eligible for state Reemployment Assistance, including independent contractors and self-employed workers.

**Weekly Benefit Amount (WBA)**  
Maximum \$275  
Minimum \$125

**+ \$600 Federal Pandemic Unemployment Compensation (FPUC)**  
Weeks Ending April 4 - July 25, 2020

**+ \$300 Federal Pandemic Unemployment Compensation (FPUC)**  
Weeks Ending Jan 2 - Sept 4, 2021

**+ \$300 Lost Wages Assistance (LWA)**  
If your WBA is \$100 or more and out of work due to COVID-19.  
\*Weeks Ending Aug. 1 - Aug. 22, 2020