

HOW TO FILE FOR Disaster Unemployment Assistance (DUA)

Visit:

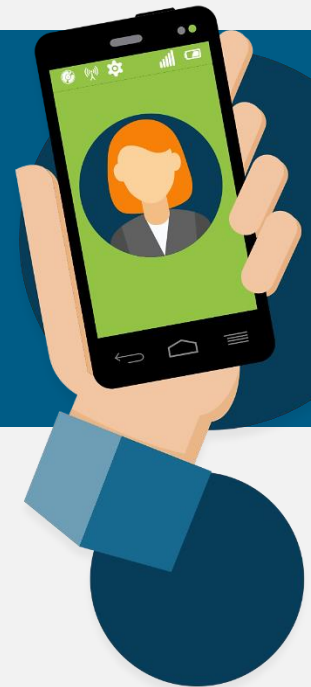
[CONNECT.MYFLORIDA.COM](https://connect.myflorida.com)



Or Call:

Florida's Disaster
Unemployment Assistance
Customer Service Center

1-800-385-3920



REPRESENTATIVES ARE AVAILABLE
Monday through Friday

7:30 a.m. – 6:30 p.m. EST
(6:30 a.m. – 5:30 p.m. CST)

An equal opportunity employer/program. Auxiliary aids and services are available upon request to individuals with disabilities. All voice telephone numbers on this website may be reached by persons using TTY/TDD equipment via the Florida Relay Service at 711.

(10/2022)

