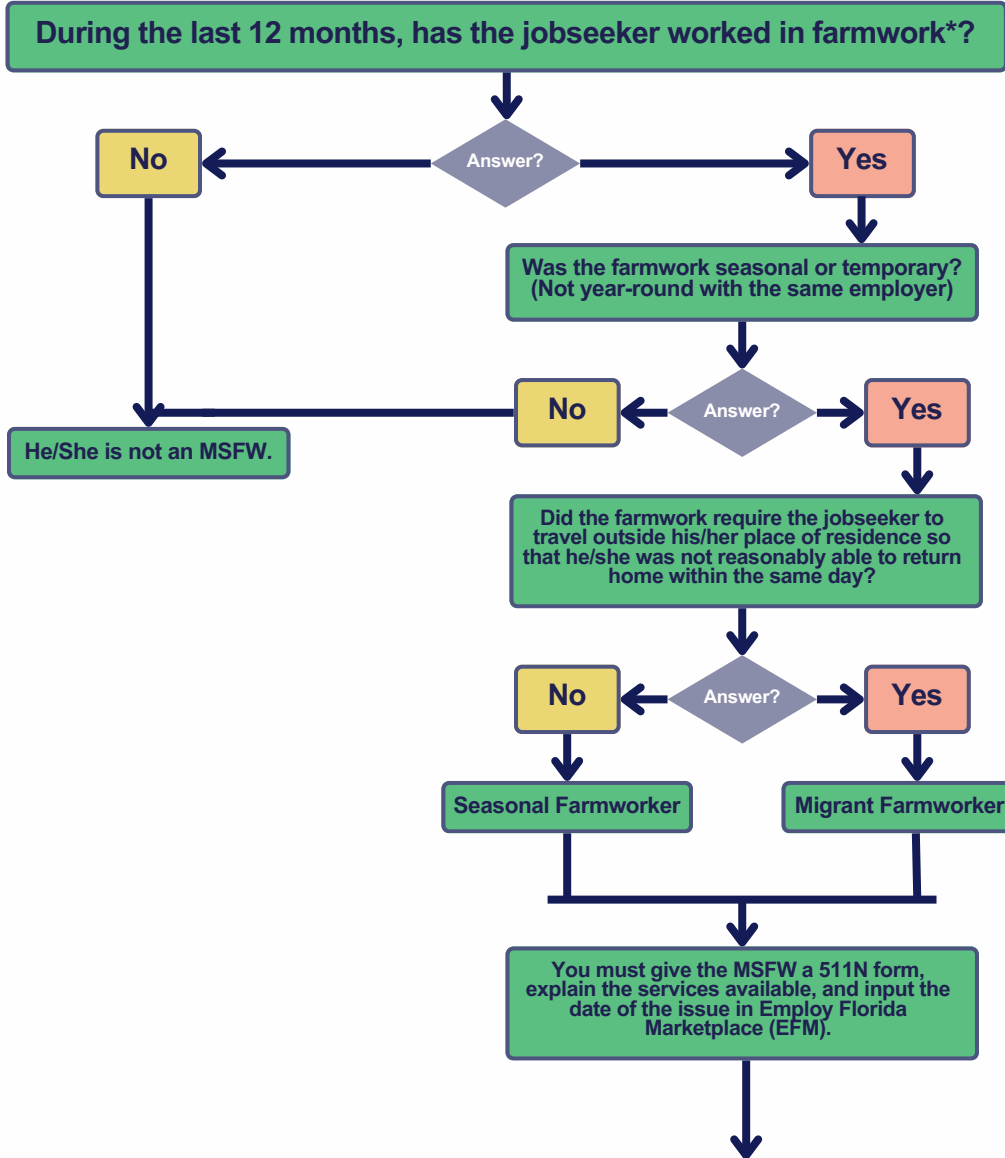


# Migrant and Seasonal Farmworker Desk Aid



\*Farmwork means the cultivation and tillage of the soil, dairying, the production, cultivation, growing, and harvesting of any agricultural or horticultural commodities. This includes:

- Raising livestock, bees, fur-bearing animals, or poultry
- Farming fish
- Any practices (including any forestry or lumbering operations) performed by a farmer or on a farm as an incident to or in conjunction with such farming operations
- Preparation for market, delivery to storage or to market or to carriers for transportation to market
- Handling, planting, drying, packing, packaging, processing, freezing, or grading prior to delivery for storage of any agricultural or horticultural commodity in its unmanufactured state (for the purposes of this definition, agricultural commodities means all commodities produced on a farm including crude gum (oleoresin) from a living tree)
- Any service or activity covered under the H-2A definition of agriculture and/or Migrant and Seasonal Agricultural Worker Protection Act (MSPA) regulations

After selecting the appropriate MSFW coding in EFM, ensure the following information is included in the full registration:

- Significant work history (at minimum, 12 months)
- Training and educational background
- Desired employment
- Description of any training needs
- Crop codes based on work experience must be entered in a case note

If MSFW decline a full registration, enter a case note with justification.

Provide referrals to supportive services based on needs.