



Charlie Crist
Governor
Cynthia Lorenzo
Interim Director

FOR IMMEDIATE RELEASE
EMBARGOED: March 27, 2009, 10:00AM

CONTACT: Robby Cunningham
(850) 245-7130

Florida's February Employment Figures Released

www.employflorida.com

TALLAHASSEE – Florida's seasonally adjusted unemployment rate for February 2009 is 9.4 percent. This represents 874,000 jobless out of a labor force of 9,252,000. The unemployment rate is 0.6 percentage point higher than the revised January rate of 8.8 percent and is up 4.2 percentage points from the February 2008 rate. The state's current unemployment rate is 1.3 percentage points higher than the national unemployment rate of 8.1 percent.

Florida's February 2009 unemployment rate is the highest since April 1976, when the rate was also 9.4 percent. The seasonally adjusted unemployment rate for Florida (using the current methodology) peaked at 9.7 percent in January, February, and March of 1976. A different methodology was used to calculate unemployment rates prior to 1976; during that time, the rate reached a high of 11.9 percent in May 1975.

Florida's total nonagricultural employment in February 2009 is 7,503,400, representing a job loss of 399,400, or -5.1 percent compared to February 2008. This is slower than the national rate for February which is -3.0 percent. The February 2009 rate of job loss continues the trend of over-the-year declines that began in August 2007 primarily due to declines in construction jobs.

"To help reinvigorate Florida's economy, Governor Charlie Crist recently announced the infusion of \$165 million in federal economic stimulus funds to directly benefit both job seekers and businesses," said Agency Interim Director Cynthia Lorenzo. "These funds will provide critically-needed training and job placement services including summer employment opportunities for young people and assistance for Floridians at One-Stop Career Centers around the state."

Additionally, the Agency has available nearly \$1.4 billion in federal stimulus funds for Florida's unemployment compensation program including benefits for unemployment compensation recipients. The Agency began mailing and electronically depositing an additional \$25 weekly in federal stimulus funds for qualified unemployment compensation recipients last week. Information on the \$165 million in federal workforce stimulus funds can be found here: <http://www.flgov.com/release/10616>, and information on the additional \$25 weekly federal unemployment compensation payments can be found here: <http://www.flgov.com/release/10620>. For more information about Florida's use of the federal recovery dollars made available through the federal American Recovery and Reinvestment Act of 2009, please visit www.FlaRecovery.com.

Floridians looking for work may want to consider the state's *Ready to Work Pilot Program*, which can give high school-age or adult participants a competitive edge in their job search by providing the opportunity to earn a credential demonstrating skills necessary for success in the workplace. Participants receive an assessment of basic workforce skills, including reading for information, applied mathematics and locating information, and those who meet the requirements will earn the *Ready to Work* credential. People in need of additional skills enroll in a free self-paced course for help in those areas.

The following counties currently offer the *Ready to Work Pilot Program*: Alachua, Baker, Bradford, Charlotte, Citrus, Clay, Collier, Duval, Gadsden, Glades, Hendry, Hernando, Indian River, Lee, Leon, Levy, Marion, Martin, Nassau, Okeechobee, Okaloosa, Pasco, Polk, Putnam, St. Lucie, St. Johns, Wakulla and Walton Counties. For more information, call 1-866-429-2334 or e-mail ReadyToWork@fldoe.org.

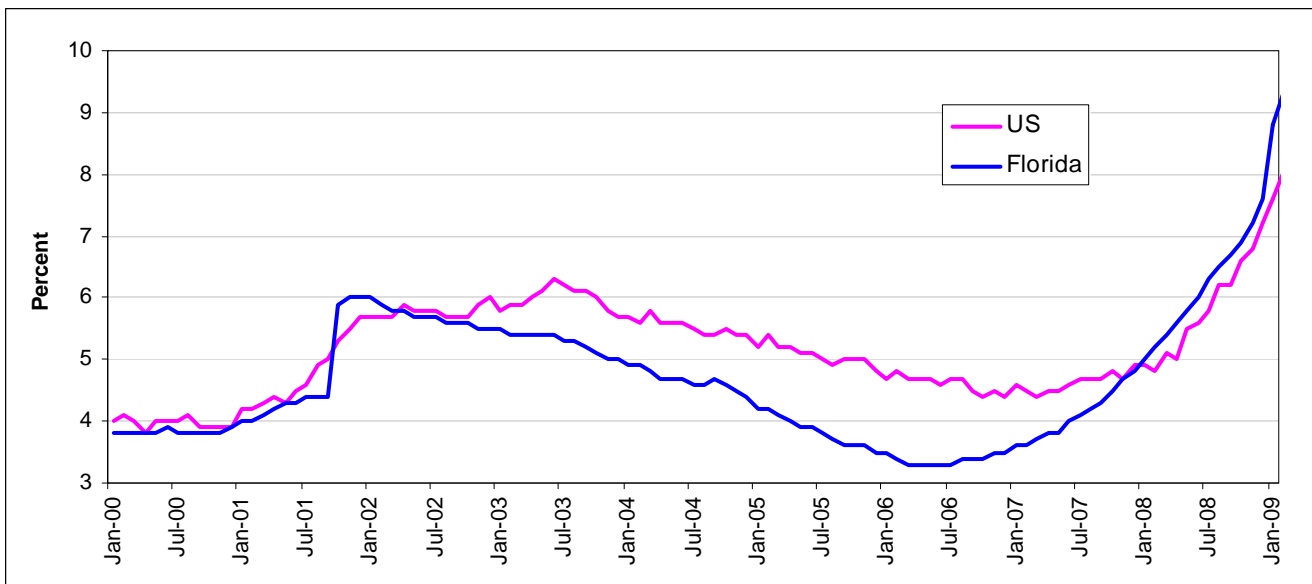
Floridians are also encouraged to utilize the Employ Florida Marketplace, the state's powerful online labor exchange tool that provides employers, job seekers, students, training providers and workforce professionals with comprehensive and convenient workforce services at no cost. Employers can post job openings and job seekers can post resumes at www.employflorida.com. The Employ Florida Marketplace currently lists more than 206,000 job opportunities in Florida.

Florida's workforce system provides critical programs and services to job seekers and businesses alike. Such services offered throughout the state include:

- **One-Stop Career Centers** – Florida's nearly 90 One-Stop Career Centers, locally operated by Regional Workforce Boards, provide local access to job placement services, local workforce information and job training opportunities. Follow this link for a [Map of Florida One-Stop Career Centers](http://www.floridajobs.org/onestop/onestopdir/index.htm). (<http://www.floridajobs.org/onestop/onestopdir/index.htm>)
- **Employ Florida Marketplace** - The Employ Florida Marketplace Online Job Bank provides 24/7 access to a wide variety of local, state and national job openings. Follow this link to access the [Employ Florida Marketplace](http://www.employflorida.com/). (<http://www.employflorida.com/>)
- **Mobile One-Stop Career Centers** – Florida's Mobile One-Stop Career Centers allow citizens in rural areas, at job fairs and during emergency situations to access critical workforce information and services.
- **Labor Market Information** – The Agency for Workforce Innovation's Labor Market Statistics Center produces data, such as employment, unemployment and wage information, that assist workforce/economic development, education, employers and job seekers. These statistics assist with economic analysis, business recruitment, career counseling and other critical business decision-making. Follow this link for information about the Agency's [Labor Market Statistics Center](http://www.labormarketinfo.com/). ([http://www.labormarketinfo.com/.](http://www.labormarketinfo.com/))
- **Work Opportunity Tax Credit** - The Work Opportunity Tax Credit offers a financial incentive to private, for-profit employers to hire individuals from certain targeted groups, who experience high rates of unemployment due to a variety of employment barriers. Follow this link for information about the [Work Opportunity Tax Credit](http://www.floridajobs.org/workforce/wotc.html). (<http://www.floridajobs.org/workforce/wotc.html>)

For more information on these and other Agency for Workforce Innovation programs, go to www.FloridaJobs.org.

United States and Florida Unemployment Rates (seasonally adjusted)



Source: Florida Agency for Workforce Innovation, Labor Market Statistics Center, Local Area Unemployment Statistics Program, in cooperation with the U.S. Department of Labor, Bureau of Labor Statistics.

Florida's Nonagricultural Employment by Industry (Seasonally Adjusted)

- The number of jobs in Florida is down 399,400 in February 2009 compared to a year ago. Construction, reacting to continued declines in the housing market, lost 114,600 jobs over the year (-20.7 percent). Construction losses account for over 27 percent of job losses in the state.
- Professional and business services (-102,100 jobs, -8.7 percent); trade, transportation, and utilities (-86,500 jobs, -5.4 percent); manufacturing (-35,100 jobs, -9.1 percent); leisure and hospitality (-33,100 jobs, -3.5 percent); financial activities (-18,300 jobs, -3.4 percent); other services (-13,500 jobs, -3.9 percent); information (-11,500 jobs, -7.2 percent); and total government (-3,600 jobs, -0.3 percent) have over-the-year declines.
- These industry job losses are partially due to weakness in specialty trade contractors; employment services; motor vehicle and parts dealers; fabricated metal product manufacturing; food services and drinking places; credit intermediation; repair and maintenance; publishing; and local government.
- Education and health services (+19,200 jobs, +1.8 percent) is the only sector gaining jobs among Florida's major industries. Much of the increase in education and health services is due to growth in nursing and residential care facilities.

Local Area Unemployment Statistics (Not Seasonally Adjusted)

- In February 2009, Liberty County has the state's lowest unemployment rate (5.5 percent), followed by Alachua County (6.0 percent); Leon and Monroe counties (6.2 percent); Jackson County (6.9 percent); and Union County (7.0 percent).
- Flagler County, at 14.2 percent, has the highest unemployment rate in Florida in February, followed by Hernando and St. Lucie counties (12.7 percent); Marion County (12.3 percent); Lee County (12.0 percent); and Charlotte County (11.8 percent). Flagler County's high unemployment rate is mainly due to manufacturing layoffs and continued weakness in construction. There were 27 Florida counties with double-digit unemployment rates in February 2009.

Area Nonagricultural Employment by Industry (Not Seasonally Adjusted)

- All metro areas in the state lost jobs over the year in February 2009. Metro areas with the largest annual declines include Miami-Ft. Lauderdale-Pompano Beach (-97,900 jobs, -4.1 percent); Orlando-Kissimmee (-56,900 jobs, -5.2 percent); and Tampa-St. Petersburg-Clearwater (-51,400 jobs, -4.1 percent). Cape Coral-Ft. Myers MSA has the highest rate of job loss at -9.2 percent over the year.
- Metro areas with the smallest annual declines include Ft. Walton Beach-Crestview-Destin (-1,500 jobs, -1.8 percent) and Panama City-Lynn Haven-Panama City Beach (-2,000 jobs, -2.7 percent). Ft. Walton Beach-Crestview-Destin MSA has the smallest rate of job decline, at -1.8 percent over the year.

Note: These unemployment and job growth rates are estimates, which are primarily based on surveys created and mandated by the US Bureau of Labor Statistics in cooperation with the Florida Agency for Workforce Innovation.

The unemployment rate is derived from Florida household surveys conducted by the US Census Bureau under contract with the US Bureau of Labor Statistics. The job growth rate is derived from Florida employer surveys conducted by the US Bureau of Labor Statistics.

Both estimates are revised on a monthly basis. In addition, these estimates are benchmarked (revised) annually based on actual counts from Florida's Unemployment Compensation tax records and other data.

###

An equal opportunity employer/program. Auxiliary aids and services are available upon request to individuals with disabilities. All voice telephone numbers on this document may be reached by persons using TTY/TDD equipment via the Florida Relay Service at 711.

The Agency for Workforce Innovation is Florida's lead workforce agency and directly administers the state's various workforce and unemployment programs and the Office of Early Learning. Workforce development policy and guidance are provided by Workforce Florida, Inc. Partnering together, along with the state's 24 Regional Workforce Boards that deliver services through nearly 90 One-Stop Career Centers around the state, they compose the Employ Florida network.

The next Florida Employment and Unemployment release will be on April 17, 2009 at 10:00 A.M.

Agency for Workforce Innovation

The Caldwell Building, Suite 100•107 East Madison Street•Tallahassee, Florida•32399-4120
Telephone (850) 245-7105•Fax (850) 921-3223•TTY/TDD 1-800-955-8771-Voice 1-800-955-8770

www.floridajobs.org

LABOR FORCE STATUS OF THE CIVILIAN NONINSTITUTIONAL POPULATION
RELEASE DATE: MARCH 27, 2009

SEASONALLY ADJUSTED

	Current Month February 2009	Month Ago January 2009	Year Ago February 2008	Over-the-Month Change		Over-the-Year Change	
				Level	Percent	Level	Percent
STATE OF FLORIDA							
Civilian Noninstitutional Population 16+	14,525,000	14,519,000	14,407,000	6,000	**	118,000	0.8
Civilian Labor Force	9,252,000	9,268,000	9,164,000	-16,000	-0.2	88,000	1.0
Employment	8,378,000	8,454,000	8,688,000	-76,000	-0.9	-310,000	-3.6
Unemployment	874,000	814,000	476,000	60,000	7.4	398,000	83.6
Unemployment Rate (%)	9.4	8.8	5.2	0.6	--	4.2	--

UNITED STATES

Civilian Noninstitutional Population 16+	234,913,000	234,739,000	232,809,000	174,000	0.1	2,104,000	0.9
Civilian Labor Force	154,214,000	153,716,000	153,498,000	498,000	0.3	716,000	0.5
Employment	141,748,000	142,099,000	146,075,000	-351,000	-0.2	-4,327,000	-3.0
Unemployment	12,467,000	11,616,000	7,423,000	851,000	7.3	5,044,000	68.0
Unemployment Rate (%)	8.1	7.6	4.8	0.5	--	3.3	--

NOT SEASONALLY ADJUSTED

	Current Month February 2009	Month Ago January 2009	Year Ago February 2008	Over-the-Month Change		Over-the-Year Change	
				Level	Percent	Level	Percent
STATE OF FLORIDA							
Civilian Noninstitutional Population 16+	14,525,000	14,519,000	14,407,000	6,000	**	118,000	0.8
Civilian Labor Force	9,182,000	9,193,000	9,103,000	-11,000	-0.1	79,000	0.9
Employment	8,322,000	8,372,000	8,665,000	-50,000	-0.6	-343,000	-4.0
Unemployment	861,000	821,000	438,000	40,000	4.9	423,000	96.6
Unemployment Rate (%)	9.4	8.9	4.8	0.5	--	4.6	--

UNITED STATES

Civilian Noninstitutional Population 16+	234,913,000	234,739,000	232,809,000	174,000	0.1	2,104,000	0.9
Civilian Labor Force	153,804,000	153,445,000	152,503,000	359,000	0.2	1,301,000	0.9
Employment	140,105,000	140,436,000	144,550,000	-331,000	-0.2	-4,445,000	-3.1
Unemployment	13,699,000	13,009,000	7,953,000	690,000	5.3	5,746,000	72.2
Unemployment Rate (%)	8.9	8.5	5.2	0.4	--	3.7	--

** = Less than 0.05%

Note: All estimates except unemployment rates are rounded to the nearest thousand. Items may not add to totals or compute to displayed percentages due to rounding. All data are subject to revision.

Source: Florida Agency for Workforce Innovation, Labor Market Statistics Center, Local Area Unemployment Statistics Program, in cooperation with the U.S Department of Labor, Bureau of Labor Statistics.

Nonagricultural Employment in Florida
Seasonally Adjusted (in thousands)

	February ^P 2009	January ^r 2009	February 2008	Over-the-Month Change		Over-the-Year Change	
				Level	Percent	Level	Percent
Total Nonagricultural Employment	7,503.4	7,552.9	7,902.8	-49.5	-0.7	-399.4	-5.1
Construction	440.3	460.1	554.9	-19.8	-4.3	-114.6	-20.7
Manufacturing	348.7	355.4	383.8	-6.7	-1.9	-35.1	-9.1
Trade, Transportation, and Utilities	1,527.9	1,531.2	1,614.4	-3.3	-0.2	-86.5	-5.4
Wholesale Trade	342.1	340.2	352.7	1.9	0.6	-10.6	-3.0
Retail Trade	950.2	953.9	1,010.5	-3.7	-0.4	-60.3	-6.0
Transportation, Warehousing, and Utilities	235.6	237.1	251.2	-1.5	-0.6	-15.6	-6.2
Information	148.2	149.0	159.7	-0.8	-0.5	-11.5	-7.2
Financial Activities	517.7	518.9	536.0	-1.2	-0.2	-18.3	-3.4
Finance and Insurance	342.3	345.6	360.4	-3.3	-1.0	-18.1	-5.0
Real Estate, Rental, and Leasing	175.4	173.3	175.6	2.1	1.2	-0.2	-0.1
Professional and Business Services	1,069.7	1,081.3	1,171.8	-11.6	-1.1	-102.1	-8.7
Professional and Technical Services	435.3	440.4	463.6	-5.1	-1.2	-28.3	-6.1
Management of Companies and Enterprises	80.3	81.2	82.0	-0.9	-1.1	-1.7	-2.1
Administrative and Waste Services	554.1	559.7	626.2	-5.6	-1.0	-72.1	-11.5
Education and Health Services	1,061.0	1,064.2	1,041.8	-3.2	-0.3	19.2	1.8
Educational Services	139.0	140.6	136.9	-1.6	-1.1	2.1	1.5
Health Care and Social Assistance	922.0	923.6	904.9	-1.6	-0.2	17.1	1.9
Leisure and Hospitality	924.9	921.9	958.0	3.0	0.3	-33.1	-3.5
Arts, Entertainment, and Recreation	179.9	177.5	187.2	2.4	1.4	-7.3	-3.9
Accommodation and Food Services	745.0	744.4	770.8	0.6	0.1	-25.8	-3.3
Other Services	331.4	331.8	344.9	-0.4	-0.1	-13.5	-3.9
Total Government	1,127.3	1,132.8	1,130.9	-5.5	-0.5	-3.6	-0.3
Local Government	781.2	786.1	785.5	-4.9	-0.6	-4.3	-0.5

^P = preliminary, ^r = revised

* = less than 0.1

Note: Sum of detail may not equal totals due to rounding or the exclusion of certain industries from publication. All data are subject to revision.

Released March 27, 2009.

Source: Florida Agency for Workforce Innovation, Labor Market Statistics Center, Current Employment Statistics Program in cooperation with the U.S. Department of Labor, Bureau of Labor Statistics.

**NONAGRICULTURAL EMPLOYMENT IN FLORIDA
STATEWIDE (Not Seasonally Adjusted)**

Released March 27, 2009

Industry Title	February 2009	January 2009	February 2008	Change from			
				Jan 2009 to Feb 2009 Level	Feb 2009 Percent	Feb 2008 to Feb 2009 Level	Feb 2009 Percent
Total Nonagricultural Employment	7,520,600	7,525,100	7,927,800	-4,500	-0.1%	-407,200	-5.1%
Total Private	6,371,100	6,380,900	6,776,000	-9,800	-0.2%	-404,900	-6.0%
Goods Producing	792,200	816,700	939,700	-24,500	-3.0%	-147,500	-15.7%
Mining and Logging	6,300	6,300	6,600	0	0.0%	-300	-4.5%
Mining, except Oil and Gas	3,700	3,700	4,100	0	0.0%	-400	-9.8%
Construction	437,700	456,300	549,300	-18,600	-4.1%	-111,600	-20.3%
Construction of Buildings	90,600	96,700	113,200	-6,100	-6.3%	-22,600	-20.0%
Heavy and Civil Engineering Construction	57,800	60,900	71,000	-3,100	-5.1%	-13,200	-18.6%
Specialty Trade Contractors	289,300	298,700	365,100	-9,400	-3.1%	-75,800	-20.8%
Building Equipment Contractors	125,000	127,600	151,100	-2,600	-2.0%	-26,100	-17.3%
Manufacturing	348,200	354,100	383,800	-5,900	-1.7%	-35,600	-9.3%
Durable Goods	235,100	238,600	257,700	-3,500	-1.5%	-22,600	-8.8%
Fabricated Metal Product Manufacturing	34,700	34,900	39,500	-200	-0.6%	-4,800	-12.2%
Computer and Electronic Product Manufacturing	47,000	47,000	48,600	0	0.0%	-1,600	-3.3%
Communications Equipment Manufacturing	8,000	8,100	8,500	-100	-1.2%	-500	-5.9%
Transportation Equipment Manufacturing	41,000	41,200	43,700	-200	-0.5%	-2,700	-6.2%
Aerospace Product and Parts Manufacturing	20,000	20,200	19,900	-200	-1.0%	100	0.5%
Miscellaneous Durable Goods Manufacturing	29,600	29,600	30,800	0	0.0%	-1,200	-3.9%
Nondurable Goods	113,100	115,500	126,100	-2,400	-2.1%	-13,000	-10.3%
Food Manufacturing	27,600	28,100	31,100	-500	-1.8%	-3,500	-11.3%
Beverage and Tobacco Product Manufacturing	10,900	10,800	11,000	100	0.9%	-100	-0.9%
Paper Manufacturing	9,900	9,900	10,100	0	0.0%	-200	-2.0%
Printing and Related Support Activities	19,400	19,900	23,300	-500	-2.5%	-3,900	-16.7%
Chemical Manufacturing	19,800	19,700	20,700	100	0.5%	-900	-4.3%

Source: Florida Agency for Workforce Innovation, Labor Market Statistics Center, Current Employment Statistics Program (in cooperation with the U.S. Department of Labor, Bureau of Labor Statistics).

**NONAGRICULTURAL EMPLOYMENT IN FLORIDA
STATEWIDE (Not Seasonally Adjusted)**

Released March 27, 2009

Industry Title	February 2009	January 2009	February 2008	Change from			
				Jan 2009 to Feb 2009 Level	Feb 2009 Percent	Feb 2008 to Feb 2009 Level	Feb 2008 to Feb 2009 Percent
Service Providing	6,728,400	6,708,400	6,988,100	20,000	0.3%	-259,700	-3.7%
Private Service Providing	5,578,900	5,564,200	5,836,300	14,700	0.3%	-257,400	-4.4%
Trade, Transportation, and Utilities	1,521,000	1,528,300	1,611,200	-7,300	-0.5%	-90,200	-5.6%
Wholesale Trade	341,300	338,200	353,500	3,100	0.9%	-12,200	-3.5%
Merchant Wholesalers, Durable Goods	176,500	174,600	184,100	1,900	1.1%	-7,600	-4.1%
Commercial Equipment Wholesalers	47,700	47,200	47,900	500	1.1%	-200	-0.4%
Electronic Goods Wholesalers	23,100	23,200	23,800	-100	-0.4%	-700	-2.9%
Machinery and Supply Wholesalers	31,700	31,900	33,300	-200	-0.6%	-1,600	-4.8%
Merchant Wholesalers, Nondurable Goods	119,200	118,500	124,300	700	0.6%	-5,100	-4.1%
Grocery and Related Product Wholesalers	44,500	44,100	46,700	400	0.9%	-2,200	-4.7%
Wholesale Electronic Markets and Agents	45,600	45,100	45,100	500	1.1%	500	1.1%
Retail Trade	945,200	953,700	1,007,000	-8,500	-0.9%	-61,800	-6.1%
Motor Vehicle and Parts Dealers	114,400	115,200	132,800	-800	-0.7%	-18,400	-13.9%
Automobile Dealers	72,900	73,800	86,000	-900	-1.2%	-13,100	-15.2%
Furniture and Home Furnishings Stores	37,000	37,300	42,700	-300	-0.8%	-5,700	-13.3%
Electronics and Appliance Stores	36,100	36,300	37,100	-200	-0.6%	-1,000	-2.7%
Building Material and Garden Supply Stores	72,500	71,700	78,800	800	1.1%	-6,300	-8.0%
Food and Beverage Stores	190,200	191,500	197,900	-1,300	-0.7%	-7,700	-3.9%
Health and Personal Care Stores	69,900	71,200	72,600	-1,300	-1.8%	-2,700	-3.7%
Gasoline Stations	36,300	36,400	38,700	-100	-0.3%	-2,400	-6.2%
Clothing and Accessory Stores	103,700	106,300	107,900	-2,600	-2.4%	-4,200	-3.9%
Sporting Goods, Hobby, Book, and Music Stores	33,000	34,900	35,200	-1,900	-5.4%	-2,200	-6.3%
General Merchandise Stores	180,100	180,800	186,800	-700	-0.4%	-6,700	-3.6%
Department Stores	78,800	79,800	84,000	-1,000	-1.3%	-5,200	-6.2%
Other General Merchandise Stores	101,300	101,000	102,800	300	0.3%	-1,500	-1.5%
Miscellaneous Store Retailers	49,800	49,800	53,300	0	0.0%	-3,500	-6.6%
Nonstore Retailers	22,200	22,300	23,200	-100	-0.4%	-1,000	-4.3%
Electronic Shopping and Mail-Order Houses	14,800	14,700	14,600	100	0.7%	200	1.4%
Transportation, Warehousing, and Utilities	234,500	236,400	250,700	-1,900	-0.8%	-16,200	-6.5%
Utilities	23,800	23,700	23,700	100	0.4%	100	0.4%

Source: Florida Agency for Workforce Innovation, Labor Market Statistics Center, Current Employment Statistics Program (in cooperation with the U.S. Department of Labor, Bureau of Labor Statistics).

**NONAGRICULTURAL EMPLOYMENT IN FLORIDA
STATEWIDE (Not Seasonally Adjusted)**

Released March 27, 2009

Industry Title	February 2009	January 2009	February 2008	Change from			
				Jan 2009 to Feb 2009 Level	Percent	Feb 2008 to Feb 2009 Level	Percent
Transportation and Warehousing	210,700	212,700	227,000	-2,000	-0.9%	-16,300	-7.2%
Air Transportation	30,500	30,600	31,900	-100	-0.3%	-1,400	-4.4%
Water Transportation	12,000	12,200	12,700	-200	-1.6%	-700	-5.5%
Truck Transportation	42,200	41,600	47,500	600	1.4%	-5,300	-11.2%
Support Activities for Transportation	44,800	47,200	50,900	-2,400	-5.1%	-6,100	-12.0%
Couriers and Messengers	29,700	29,900	31,000	-200	-0.7%	-1,300	-4.2%
Warehousing and Storage	27,700	28,100	29,100	-400	-1.4%	-1,400	-4.8%
Information	148,300	148,600	159,200	-300	-0.2%	-10,900	-6.8%
Publishing Industries, except Internet	37,800	37,900	42,100	-100	-0.3%	-4,300	-10.2%
Broadcasting, except Internet	14,200	14,500	15,800	-300	-2.1%	-1,600	-10.1%
Telecommunications	63,500	63,000	65,900	500	0.8%	-2,400	-3.6%
Wired Telecommunications Carriers	45,600	45,500	48,600	100	0.2%	-3,000	-6.2%
Internet Service Providers and Data Processing	16,600	16,700	17,600	-100	-0.6%	-1,000	-5.7%
Financial Activities	514,800	514,600	534,200	200	0.0%	-19,400	-3.6%
Finance and Insurance	341,000	342,900	359,900	-1,900	-0.6%	-18,900	-5.3%
Credit Intermediation and Related Activities	163,100	164,100	177,300	-1,000	-0.6%	-14,200	-8.0%
Depository Credit Intermediation	101,500	101,900	105,500	-400	-0.4%	-4,000	-3.8%
Insurance Carriers and Related Activities	132,600	132,700	136,600	-100	-0.1%	-4,000	-2.9%
Insurance Carriers	73,400	73,300	73,900	100	0.1%	-500	-0.7%
Insurance Agencies, Brokerages, and Related	59,200	59,400	62,700	-200	-0.3%	-3,500	-5.6%
Real Estate, Rental, and Leasing	173,800	171,700	174,300	2,100	1.2%	-500	-0.3%
Real Estate	126,600	126,600	127,400	0	0.0%	-800	-0.6%
Professional and Business Services	1,070,300	1,075,500	1,173,100	-5,200	-0.5%	-102,800	-8.8%
Professional and Technical Services	437,300	440,300	469,200	-3,000	-0.7%	-31,900	-6.8%
Legal Services	88,200	88,300	90,400	-100	-0.1%	-2,200	-2.4%
Accounting, Tax Preparation, and Bookkeeping	56,700	55,600	67,200	1,100	2.0%	-10,500	-15.6%
Architectural, Engineering, and Related	75,900	77,300	89,100	-1,400	-1.8%	-13,200	-14.8%
Computer Systems Design and Related	62,900	64,100	62,500	-1,200	-1.9%	400	0.6%
Management, Scientific, and Technical	69,800	70,100	68,700	-300	-0.4%	1,100	1.6%
Management of Companies and Enterprises	80,300	80,800	82,100	-500	-0.6%	-1,800	-2.2%

Source: Florida Agency for Workforce Innovation, Labor Market Statistics Center, Current Employment Statistics Program (in cooperation with the U.S. Department of Labor, Bureau of Labor Statistics).

**NONAGRICULTURAL EMPLOYMENT IN FLORIDA
STATEWIDE (Not Seasonally Adjusted)**

Released March 27, 2009

Industry Title	February 2009	January 2009	February 2008	Change from			
				Jan 2009 to Feb 2009 Level	Percent	Feb 2008 to Feb 2009 Level	Percent
Administrative and Waste Services	552,700	554,400	621,800	-1,700	-0.3%	-69,100	-11.1%
Administrative and Support Services	532,200	534,000	601,600	-1,800	-0.3%	-69,400	-11.5%
Employment Services	192,600	190,300	228,200	2,300	1.2%	-35,600	-15.6%
Business Support Services	64,100	65,000	65,900	-900	-1.4%	-1,800	-2.7%
Travel Arrangement and Reservation Services	30,000	30,800	33,300	-800	-2.6%	-3,300	-9.9%
Investigation and Security Services	62,300	61,900	64,100	400	0.6%	-1,800	-2.8%
Services to Buildings and Dwellings	131,500	135,000	139,500	-3,500	-2.6%	-8,000	-5.7%
Waste Management and Remediation Services	20,500	20,400	20,200	100	0.5%	300	1.5%
Education and Health Services	1,062,900	1,059,400	1,043,900	3,500	0.3%	19,000	1.8%
Educational Services	140,900	140,400	139,600	500	0.4%	1,300	0.9%
Elementary and Secondary Schools	47,100	47,800	47,600	-700	-1.5%	-500	-1.1%
Colleges and Universities	53,500	51,800	51,100	1,700	3.3%	2,400	4.7%
Health Care and Social Assistance	922,000	919,000	904,300	3,000	0.3%	17,700	2.0%
Ambulatory Health Care Services	378,200	376,000	375,900	2,200	0.6%	2,300	0.6%
Offices of Physicians	171,200	170,600	170,900	600	0.4%	300	0.2%
Home Health Care Services	57,800	57,000	56,800	800	1.4%	1,000	1.8%
Hospitals	253,300	253,400	247,800	-100	0.0%	5,500	2.2%
Nursing and Residential Care Facilities	175,000	175,100	168,200	-100	-0.1%	6,800	4.0%
Nursing Care Facilities	99,700	99,200	93,300	500	0.5%	6,400	6.9%
Community Care for the Elderly	45,600	45,600	44,500	0	0.0%	1,100	2.5%
Social Assistance	115,500	114,500	112,400	1,000	0.9%	3,100	2.8%
Leisure and Hospitality	931,100	908,100	968,600	23,000	2.5%	-37,500	-3.9%
Arts, Entertainment, and Recreation	180,700	175,400	189,600	5,300	3.0%	-8,900	-4.7%
Amusement, Gambling, and Recreation	137,700	134,900	147,200	2,800	2.1%	-9,500	-6.5%
Amusement Parks and Arcades	54,800	52,800	56,700	2,000	3.8%	-1,900	-3.4%
Accommodation and Food Services	750,400	732,700	779,000	17,700	2.4%	-28,600	-3.7%
Accommodation	154,200	151,400	163,700	2,800	1.8%	-9,500	-5.8%
Food Services and Drinking Places	596,200	581,300	615,300	14,900	2.6%	-19,100	-3.1%

Source: Florida Agency for Workforce Innovation, Labor Market Statistics Center, Current Employment Statistics Program (in cooperation with the U.S. Department of Labor, Bureau of Labor Statistics).

**NONAGRICULTURAL EMPLOYMENT IN FLORIDA
STATEWIDE (Not Seasonally Adjusted)**

Released March 27, 2009

Industry Title	February 2009	January 2009	February 2008	Change from			
				Jan 2009 to Feb 2009 Level	Feb 2009 Percent	Feb 2008 to Feb 2009 Level	Feb 2008 Percent
Other Services	330,500	329,700	346,100	800	0.2%	-15,600	-4.5%
Repair and Maintenance	64,200	64,400	76,300	-200	-0.3%	-12,100	-15.9%
Automotive Repair and Maintenance	42,400	42,800	52,100	-400	-0.9%	-9,700	-18.6%
Personal and Laundry Services	86,100	85,600	85,200	500	0.6%	900	1.1%
Membership Associations and Organizations	180,200	179,700	184,600	500	0.3%	-4,400	-2.4%
Total Government	1,149,500	1,144,200	1,151,800	5,300	0.5%	-2,300	-0.2%
Federal	128,800	130,100	128,800	-1,300	-1.0%	0	0.0%
State	222,500	217,700	220,600	4,800	2.2%	1,900	0.9%
Local	798,200	796,400	802,400	1,800	0.2%	-4,200	-0.5%

Note: Employment estimates have been rounded to the nearest hundred. Sum of detail may not equal totals due to rounding or the exclusion of certain industries from publication. All data are subject to revision.

STATE OF FLORIDA
LOCAL AREA UNEMPLOYMENT STATISTICS BY COUNTY
(NOT SEASONALLY ADJUSTED)

COUNTY	FEBRUARY 2009				JANUARY 2009				FEBRUARY 2008			
	LABOR FORCE	EMPLOY- MENT	UNEMPLOYMENT LEVEL	RATE (%)	LABOR FORCE	EMPLOY- MENT	UNEMPLOYMENT LEVEL	RATE (%)	LABOR FORCE	EMPLOY- MENT	UNEMPLOYMENT LEVEL	RATE (%)
ALACHUA	131852	123878	7974	6.0	131700	124057	7643	5.8	129626	125515	4111	3.2
BAKER	11957	10913	1044	8.7	11974	10977	997	8.3	11861	11294	567	4.8
BAY	87810	79258	8552	9.7	87682	78945	8737	10.0	84573	80675	3898	4.6
BRADFORD	12657	11737	920	7.3	12659	11773	886	7.0	12155	11680	475	3.9
BREVARD	264904	238290	26614	10.0	265403	239938	25465	9.6	263917	250281	13636	5.2
BROWARD	998331	915908	82423	8.3	1001844	923560	78284	7.8	997474	956597	40877	4.1
CALHOUN	6065	5584	481	7.9	6077	5597	480	7.9	5644	5421	223	4.0
CHARLOTTE	69820	61597	8223	11.8	69724	61913	7811	11.2	70038	65480	4558	6.5
CITRUS	59418	52508	6910	11.6	58996	52253	6743	11.4	55727	52099	3628	6.5
CLAY	94408	86035	8373	8.9	94363	86536	7827	8.3	93015	89035	3980	4.3
COLLIER	151672	137702	13970	9.2	152542	139041	13501	8.9	153135	145627	7508	4.9
COLUMBIA	32762	30141	2621	8.0	32623	30088	2535	7.8	30917	29596	1321	4.3
DESOTO	15938	14606	1332	8.4	15981	14694	1287	8.1	15192	14472	720	4.7
DIXIE	5622	5003	619	11.0	5666	5068	598	10.6	5402	5075	327	6.1
DUVAL	444265	401933	42332	9.5	444358	404273	40085	9.0	436695	415948	20747	4.8
ESCAMBIA	140675	127115	13560	9.6	140710	127747	12963	9.2	136683	130342	6341	4.6
FLAGLER	32100	27546	4554	14.2	32011	27381	4630	14.5	30986	28551	2435	7.9
FRANKLIN	4611	4262	349	7.6	4492	4169	323	7.2	4516	4340	176	3.9
GADSDEN	21885	19479	2406	11.0	21670	19422	2248	10.4	20792	19802	990	4.8
GILCHRIST	7922	7247	675	8.5	7907	7257	650	8.2	7671	7343	328	4.3
GLADES	5035	4632	403	8.0	5050	4656	394	7.8	4715	4500	215	4.6
GULF	6240	5668	572	9.2	6197	5635	562	9.1	6078	5783	295	4.9
HAMILTON	4900	4335	565	11.5	4919	4362	557	11.3	4593	4344	249	5.4
HARDEE	12767	11707	1060	8.3	12694	11702	992	7.8	11836	11326	510	4.3
HENDRY	19693	17555	2138	10.9	19688	17600	2088	10.6	18190	16940	1250	6.9
HERNANDO	63404	55321	8083	12.7	63575	55685	7890	12.4	62031	57659	4372	7.0
HIGHLANDS	43788	39637	4151	9.5	43587	39527	4060	9.3	41111	38933	2178	5.3
HILLSBOROUGH	601944	543629	58315	9.7	603091	547207	55884	9.3	595600	566608	28992	4.9
HOLMES	9306	8546	760	8.2	9240	8541	699	7.6	8671	8317	354	4.1
INDIAN RIVER	61079	54032	7047	11.5	61339	54642	6697	10.9	62355	58604	3751	6.0
JACKSON	22352	20802	1550	6.9	22388	20855	1533	6.8	21603	20737	866	4.0
JEFFERSON	6899	6396	503	7.3	6871	6377	494	7.2	6752	6502	250	3.7
LAFAYETTE	3149	2906	243	7.7	3135	2906	229	7.3	2951	2856	95	3.2
LAKE	134434	120531	13903	10.3	134668	121376	13292	9.9	133588	126971	6617	5.0
LEE	281010	247254	33756	12.0	281150	248665	32485	11.6	289863	271440	18423	6.4
LEON	146842	137685	9157	6.2	146109	137278	8831	6.0	144707	139963	4744	3.3
LEVY	17465	15613	1852	10.6	17399	15632	1767	10.2	16641	15779	862	5.2
LIBERTY	4043	3822	221	5.5	4034	3814	220	5.5	3715	3600	115	3.1

STATE OF FLORIDA
LOCAL AREA UNEMPLOYMENT STATISTICS BY COUNTY
(NOT SEASONALLY ADJUSTED)

COUNTY	FEBRUARY 2009				JANUARY 2009				FEBRUARY 2008			
	LABOR FORCE	EMPLOY- MENT	UNEMPLOYMENT LEVEL	UNEMPLOYMENT RATE (%)	LABOR FORCE	EMPLOY- MENT	UNEMPLOYMENT LEVEL	UNEMPLOYMENT RATE (%)	LABOR FORCE	EMPLOY- MENT	UNEMPLOYMENT LEVEL	UNEMPLOYMENT RATE (%)
MADISON	6939	6230	709	10.2	6913	6223	690	10.0	6790	6429	361	5.3
MANATEE	145024	129080	15944	11.0	145222	130368	14854	10.2	145695	138246	7449	5.1
MARION	140825	123570	17255	12.3	140698	124310	16388	11.6	136760	128583	8177	6.0
MARTIN	63980	57483	6497	10.2	63986	57759	6227	9.7	64027	60647	3380	5.3
MIAMI-DADE	1195091	1106006	89085	7.5	1197822	1115340	82482	6.9	1202698	1146239	56459	4.7
MONROE	48752	45741	3011	6.2	48259	45349	2910	6.0	47011	45607	1404	3.0
NASSAU	35505	32325	3180	9.0	35622	32514	3108	8.7	34916	33453	1463	4.2
OKALOOSA	95982	88998	6984	7.3	96315	89408	6907	7.2	93399	89755	3644	3.9
OKEECHOBEE	18547	16515	2032	11.0	18589	16579	2010	10.8	17485	16523	962	5.5
ORANGE	599901	542124	57777	9.6	600811	545923	54888	9.1	596710	571088	25622	4.3
OSCEOLA	134949	120533	14416	10.7	135007	121378	13629	10.1	133405	126973	6432	4.8
PALM BEACH	628988	568152	60836	9.7	629847	571810	58037	9.2	619081	588218	30863	5.0
PASCO	197111	174893	22218	11.3	197446	176044	21402	10.8	193794	182286	11508	5.9
PINELLAS	457198	411259	45939	10.0	457750	413966	43784	9.6	450760	428643	22117	4.9
POLK	272462	244147	28315	10.4	273727	246346	27381	10.0	269177	255892	13285	4.9
PUTNAM	33167	29533	3634	11.0	33083	29512	3571	10.8	31732	29937	1795	5.7
ST. JOHNS	92569	84995	7574	8.2	92647	85490	7157	7.7	91651	87959	3692	4.0
ST. LUCIE	123746	108066	15680	12.7	123593	108586	15007	12.1	121967	114016	7951	6.5
SANTA ROSA	69038	63044	5994	8.7	69143	63358	5785	8.4	67601	64645	2956	4.4
SARASOTA	167315	149533	17782	10.6	168123	151026	17097	10.2	169477	160153	9324	5.5
SEMINOLE	239168	217940	21228	8.9	239683	219467	20216	8.4	240084	229584	10500	4.4
SUMTER	33005	30273	2732	8.3	32735	30137	2598	7.9	30226	28896	1330	4.4
SUWANNEE	17887	16308	1579	8.8	17842	16335	1507	8.4	16852	16102	750	4.5
TAYLOR	9347	8375	972	10.4	9271	8309	962	10.4	8934	8499	435	4.9
UNION	5271	4904	367	7.0	5237	4906	331	6.3	5119	4925	194	3.8
VOLUSIA	254309	228068	26241	10.3	252695	227350	25345	10.0	252621	239861	12760	5.1
WAKULLA	15484	14375	1109	7.2	15330	14332	998	6.5	15143	14613	530	3.5
WALTON	31753	29298	2455	7.7	31555	29191	2364	7.5	29140	27928	1212	4.2
WASHINGTON	10062	9081	981	9.7	10069	9101	968	9.6	9521	9042	479	5.0
FLORIDA												
NOT SEASONALLY ADJUSTED												
	9182000	8322000	861000	9.4	9193000	8372000	821000	8.9	9103000	8665000	438000	4.8
SEASONALLY ADJUSTED												
	9252000	8378000	874000	9.4	9268000	8454000	814000	8.8	9164000	8688000	476000	5.2
UNITED STATES												
NOT SEASONALLY ADJUSTED												
	153804000	140105000	13699000	8.9	153445000	140436000	13009000	8.5	152503000	144550000	7953000	5.2
SEASONALLY ADJUSTED												
	154214000	141748000	12467000	8.1	153716000	142099000	11616000	7.6	153498000	146075000	7423000	4.8

PAGE 2 OF 2

RELEASED MARCH 27, 2009

NOTE: Items may not add to totals or compute to displayed percentages due to rounding. All data are subject to revision.

SOURCE: Florida Agency for Workforce Innovation, Labor Market Statistics Center, Local Area Unemployment Statistics Program, in cooperation with the U.S. Department of Labor, Bureau of Labor Statistics.

STATE OF FLORIDA
 LOCAL AREA UNEMPLOYMENT STATISTICS BY METROPOLITAN STATISTICAL AREA (MSA)
 (NOT SEASONALLY ADJUSTED)

MSA (COUNTIES)	FEBRUARY 2009				JANUARY 2009				FEBRUARY 2008			
	LABOR FORCE	EMPLOY- MENT	UNEMPLOYMENT LEVEL	RATE (%)	LABOR FORCE	EMPLOY- MENT	UNEMPLOYMENT LEVEL	RATE (%)	LABOR FORCE	EMPLOY- MENT	UNEMPLOYMENT LEVEL	RATE (%)
BRADENTON-SARASOTA-VENICE (Manatee and Sarasota)	312339	278613	33726	10.8	313345	281394	31951	10.2	315172	298399	16773	5.3
CAPE CORAL-FT. MYERS (Lee)	281010	247254	33756	12.0	281150	248665	32485	11.6	289863	271440	18423	6.4
DELTONA-DAYTONA BEACH-ORMOND BEACH (Volusia)	254309	228068	26241	10.3	252695	227350	25345	10.0	252621	239861	12760	5.1
FT. WALTON BEACH-CRESTVIEW-DESTIN (Okaloosa)	95982	88998	6984	7.3	96315	89408	6907	7.2	93399	89755	3644	3.9
GAINESVILLE (Alachua and Gilchrist)	139774	131125	8649	6.2	139607	131314	8293	5.9	137297	132858	4439	3.2
JACKSONVILLE (Baker, Clay, Duval, Nassau, and St. Johns)	678705	616202	62503	9.2	678964	619790	59174	8.7	668139	637689	30450	4.6
LAKELAND-WINTER HAVEN (Polk)	272462	244147	28315	10.4	273727	246346	27381	10.0	269177	255892	13285	4.9
MIAMI-FT. LAUDERDALE-POMPANO BEACH (Broward, Miami-Dade, and Palm Beach)	2822410	2590066	232344	8.2	2829513	2610710	218803	7.7	2819253	2691054	128199	4.5
Ft. Lauderdale-Pompano Beach-Deerfield Beach Metropolitan Division (Broward)	998331	915908	82423	8.3	1001844	923560	78284	7.8	997474	956597	40877	4.1
Miami-Miami Beach-Kendall Metropolitan Division (Miami-Dade)	1195091	1106006	89085	7.5	1197822	1115340	82482	6.9	1202698	1146239	56459	4.7
West Palm Beach-Boca Raton-Boynton Beach Metropolitan Division (Palm Beach)	628988	568152	60836	9.7	629847	571810	58037	9.2	619081	588218	30863	5.0
NAPLES-MARCO ISLAND (Collier)	151672	137702	13970	9.2	152542	139041	13501	8.9	153135	145627	7508	4.9
OCALA (Marion)	140825	123570	17255	12.3	140698	124310	16388	11.6	136760	128583	8177	6.0
ORLANDO-KISSIMMEE (Lake, Orange, Osceola, and Seminole)	1108451	1001128	107323	9.7	1110168	1008143	102025	9.2	1103785	1054615	49170	4.5
PALM BAY-MELBOURNE-TITUSVILLE (Brevard)	264904	238290	26614	10.0	265403	239938	25465	9.6	263917	250281	13636	5.2
PALM COAST (Flagler)	32100	27546	4554	14.2	32011	27381	4630	14.5	30986	28551	2435	7.9
PANAMA CITY-LYNN HAVEN-PANAMA CITY BEACH (Bay)	87810	79258	8552	9.7	87682	78945	8737	10.0	84573	80675	3898	4.6
PENSACOLA-FERRY PASS-BRENT (Escambia and Santa Rosa)	209713	190159	19554	9.3	209853	191105	18748	8.9	204284	194987	9297	4.6
PORT ST. LUCIE (Martin and St. Lucie)	187726	165549	22177	11.8	187579	166345	21234	11.3	185994	174663	11331	6.1
PUNTA GORDA (Charlotte)	69820	61597	8223	11.8	69724	61913	7811	11.2	70038	65480	4558	6.5
SEBASTIAN-VERO BEACH (Indian River)	61079	54032	7047	11.5	61339	54642	6697	10.9	62355	58604	3751	6.0
TALLAHASSEE (Gadsden, Jefferson, Leon, and Wakulla)	191111	177936	13175	6.9	189980	177409	12571	6.6	187392	180879	6513	3.5
TAMPA-ST. PETERSBURG-CLEARWATER (Hernando, Hillsborough, Pasco, and Pinellas)	1319659	1185103	134556	10.2	1321861	1192901	128960	9.8	1302184	1235195	66989	5.1
FLORIDA												
NOT SEASONALLY ADJUSTED	9182000	8322000	861000	9.4	9193000	8372000	821000	8.9	9103000	8665000	438000	4.8
SEASONALLY ADJUSTED	9252000	8378000	874000	9.4	9268000	8454000	814000	8.8	9164000	8688000	476000	5.2
UNITED STATES												
NOT SEASONALLY ADJUSTED	153804000	140105000	13699000	8.9	153445000	140436000	13009000	8.5	152503000	144550000	7953000	5.2
SEASONALLY ADJUSTED	154214000	141748000	12467000	8.1	153716000	142099000	11616000	7.6	153498000	146075000	7423000	4.8

RELEASED MARCH 27, 2009

NOTE: Items may not add to totals or compute to displayed percentages due to rounding. All data are subject to revision.

SOURCE: Florida Agency for Workforce Innovation, Labor Market Statistics Center, Local Area Unemployment Statistics Program, in cooperation with the U.S. Department of Labor, Bureau of Labor Statistics.

STATE OF FLORIDA
COUNTIES RANKED BY UNEMPLOYMENT RATE
(NOT SEASONALLY ADJUSTED)

FEBRUARY 2009
(Preliminary)

RELEASED 03/27/2009

UNEMPLOYMENT			UNEMPLOYMENT		
RANK	COUNTY	RATE (%)	RANK	COUNTY	RATE (%)
1	FLAGLER	14.2		FLORIDA	9.4
2	HERNANDO	12.7	36	COLLIER	9.2
3	ST. LUCIE	12.7	37	GULF	9.2
4	MARION	12.3	38	NASSAU	9.0
5	LEE	12.0	39	SEMINOLE	8.9
6	CHARLOTTE	11.8	40	CLAY	8.9
7	CITRUS	11.6		UNITED STATES	8.9
8	INDIAN RIVER	11.5	41	SUWANNEE	8.8
9	HAMILTON	11.5	42	BAKER	8.7
10	PASCO	11.3	43	SANTA ROSA	8.7
11	DIXIE	11.0	44	GILCHRIST	8.5
12	MANATEE	11.0	45	DESOTO	8.4
13	GADSDEN	11.0	46	HARDEE	8.3
14	PUTNAM	11.0	47	SUMTER	8.3
15	OKEECHOBEE	11.0	48	BROWARD	8.3
16	HENDRY	10.9	49	ST. JOHNS	8.2
17	OSCEOLA	10.7	50	HOLMES	8.2
18	SARASOTA	10.6	51	GLADES	8.0
19	LEVY	10.6	52	COLUMBIA	8.0
20	TAYLOR	10.4	53	CALHOUN	7.9
21	POLK	10.4	54	WALTON	7.7
22	LAKE	10.3	55	LAFAYETTE	7.7
23	VOLUSIA	10.3	56	FRANKLIN	7.6
24	MADISON	10.2	57	MIAMI-DADE	7.5
25	MARTIN	10.2	58	JEFFERSON	7.3
26	PINELLAS	10.0	59	OKALOOSA	7.3
27	BREVARD	10.0	60	BRADFORD	7.3
28	WASHINGTON	9.7	61	WAKULLA	7.2
29	BAY	9.7	62	UNION	7.0
30	HILLSBOROUGH	9.7	63	JACKSON	6.9
31	PALM BEACH	9.7	64	LEON	6.2
32	ESCAMBIA	9.6	65	MONROE	6.2
33	ORANGE	9.6	66	ALACHUA	6.0
34	DUVAL	9.5	67	LIBERTY	5.5
35	HIGHLANDS	9.5			

NOTE: All data are subject to revision.

Source: Florida Agency for Workforce Innovation, Labor Market Statistics Center, Local Area Unemployment Statistics Program, in cooperation with the U.S. Department of Labor, Bureau of Labor Statistics.

STATE OF FLORIDA
 METROPOLITAN STATISTICAL AREAS (MSAs) AND METROPOLITAN DIVISIONS (MDs)
 RANKED BY UNEMPLOYMENT RATE
 (NOT SEASONALLY ADJUSTED)
 FEBRUARY 2009 (Preliminary)

1. Palm Coast MSA	14.2 %
2. Ocala MSA	12.3
3. Cape Coral-Ft. Myers MSA	12.0
4. Port St. Lucie MSA	11.8
5. Punta Gorda MSA	11.8
6. Sebastian-Vero Beach MSA	11.5
7. Bradenton-Sarasota-Venice MSA	10.8
8. Lakeland-Winter Haven MSA	10.4
9. Deltona-Daytona Beach-Ormond Beach MSA	10.3
10. Tampa-St. Petersburg-Clearwater MSA	10.2
11. Palm Bay-Melbourne-Titusville MSA	10.0
12. Panama City-Lynn Haven-Panama City Beach MSA	9.7
13. Orlando-Kissimmee MSA	9.7
14. West Palm Beach-Boca Raton-Boynton Beach MD	9.7
Florida	9.4
15. Pensacola-Ferry Pass-Brent MSA	9.3
16. Naples-Marco Island MSA	9.2
17. Jacksonville MSA	9.2
United States	8.9
18. Ft. Lauderdale-Pompano Beach-Deerfield Beach MD	8.3
19. Miami-Ft. Lauderdale-Pompano Beach MSA	8.2
20. Miami-Miami Beach-Kendall MD	7.5
21. Ft. Walton Beach-Crestview-Destin MSA	7.3
22. Tallahassee MSA	6.9
23. Gainesville MSA	6.2

Released March 27, 2009

NOTE: All data are subject to revision.

Source: Florida Agency for Workforce Innovation, Labor Market Statistics Center, Local Area Unemployment Statistics Program, in cooperation with the U.S. Department of Labor, Bureau of Labor Statistics.

TOTAL NONAGRICULTURAL EMPLOYMENT
FLORIDA (Not Seasonally Adjusted)

Area	February 2009	January 2009	February 2008	Over-the-Month Change		Over-the-Year Change	
				Level	Percent	Level	Percent
Statewide	7,520,600	7,525,100	7,927,800	-4,500	-0.1%	-407,200	-5.1%
Bradenton-Sarasota-Venice MSA	258,200	259,000	279,300	-800	-0.3%	-21,100	-7.6%
Cape Coral-Ft. Myers MSA	206,100	206,400	226,900	-300	-0.1%	-20,800	-9.2%
Deltona-Daytona Beach-Ormond Beach MSA	163,800	161,600	173,900	+2,200	+1.4%	-10,100	-5.8%
Ft. Lauderdale-Pompano Beach-Deerfield Beach MD	751,700	753,500	786,900	-1,800	-0.2%	-35,200	-4.5%
Ft. Walton Beach-Crestview-Destin MSA	80,000	79,800	81,500	+200	+0.3%	-1,500	-1.8%
Gainesville MSA	134,500	133,700	137,200	+800	+0.6%	-2,700	-2.0%
Jacksonville MSA	603,300	602,200	629,500	+1,100	+0.2%	-26,200	-4.2%
Lakeland-Winter Haven MSA	203,100	203,700	213,600	-600	-0.3%	-10,500	-4.9%
Miami-Ft. Lauderdale-Pompano Beach MSA	2,316,000	2,319,800	2,413,900	-3,800	-0.2%	-97,900	-4.1%
Miami-Miami Beach-Kendall MD	1,028,400	1,030,600	1,067,800	-2,200	-0.2%	-39,400	-3.7%
Naples-Marco Island MSA	123,000	123,300	131,100	-300	-0.2%	-8,100	-6.2%
Ocala MSA	100,600	100,500	106,000	+100	+0.1%	-5,400	-5.1%
Orlando-Kissimmee MSA	1,042,500	1,043,100	1,099,400	-600	-0.1%	-56,900	-5.2%
Palm Bay-Melbourne-Titusville MSA	200,900	200,900	212,600	+0	+0.0%	-11,700	-5.5%
Panama City-Lynn Haven-Panama City Beach MSA	72,800	72,100	74,800	+700	+1.0%	-2,000	-2.7%
Pensacola-Ferry Pass-Brent MSA	163,600	163,400	169,400	+200	+0.1%	-5,800	-3.4%
Port St. Lucie MSA	124,400	124,000	132,800	+400	+0.3%	-8,400	-6.3%
Punta Gorda MSA	41,900	41,800	44,900	+100	+0.2%	-3,000	-6.7%
Sebastian-Vero Beach MSA	45,400	46,000	49,400	-600	-1.3%	-4,000	-8.1%
Tallahassee MSA	176,100	174,200	180,300	+1,900	+1.1%	-4,200	-2.3%
Tampa-St. Petersburg-Clearwater MSA	1,193,600	1,194,000	1,245,000	-400	**	-51,400	-4.1%
West Palm Beach-Boca Raton-Boynton Beach MD	535,900	535,700	559,200	+200	**	-23,300	-4.2%

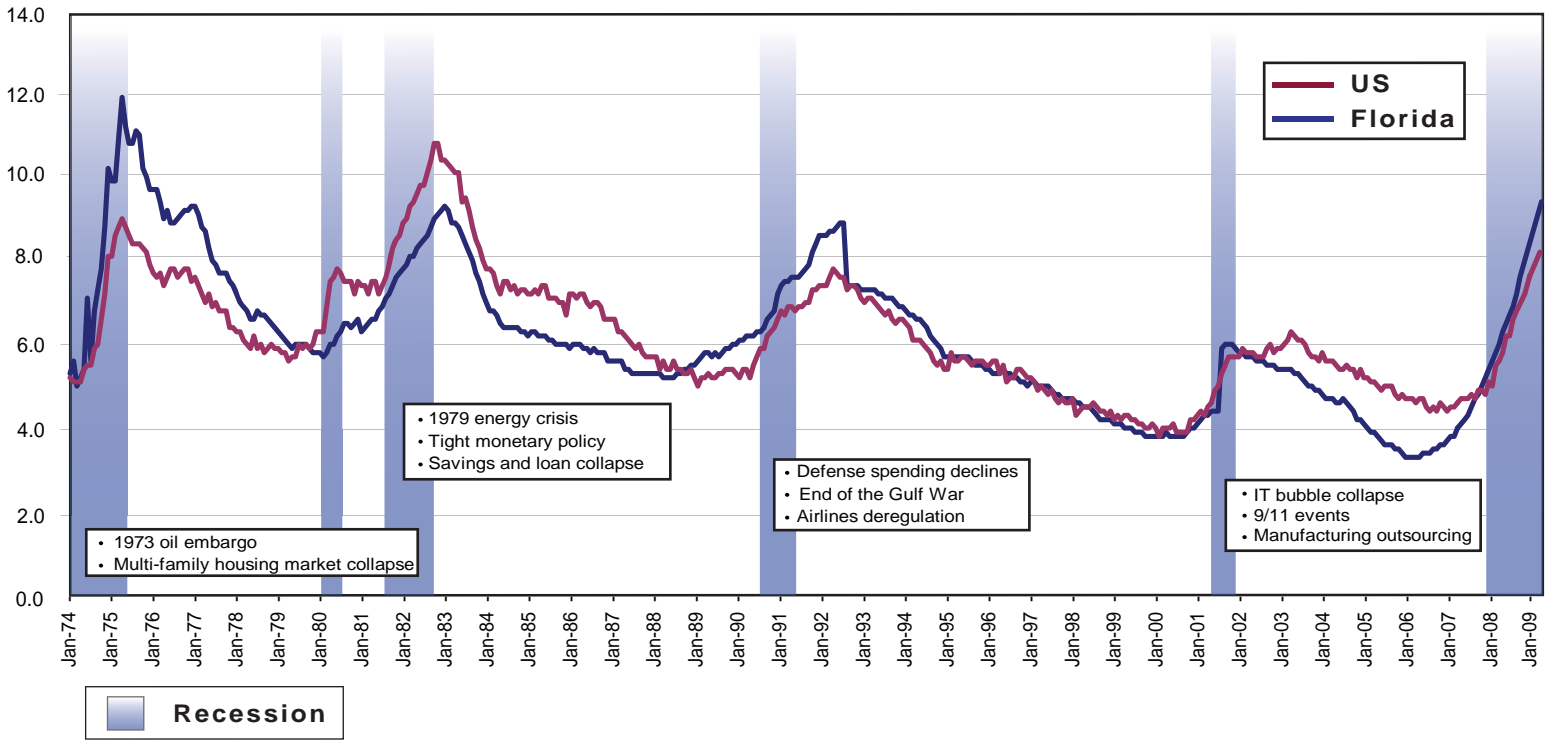
** = Less than 0.05 percent

Note: Employment estimates have been rounded to the nearest hundred. Sum of detail may not equal totals due to rounding or the exclusion of certain industries from publication. All data are subject to revision. Released March 27, 2009.

Source: Florida Agency for Workforce Innovation, Labor Market Statistics Center, Current Employment Statistics Program (in cooperation with the U.S. Department of Labor, Bureau of Labor Statistics).

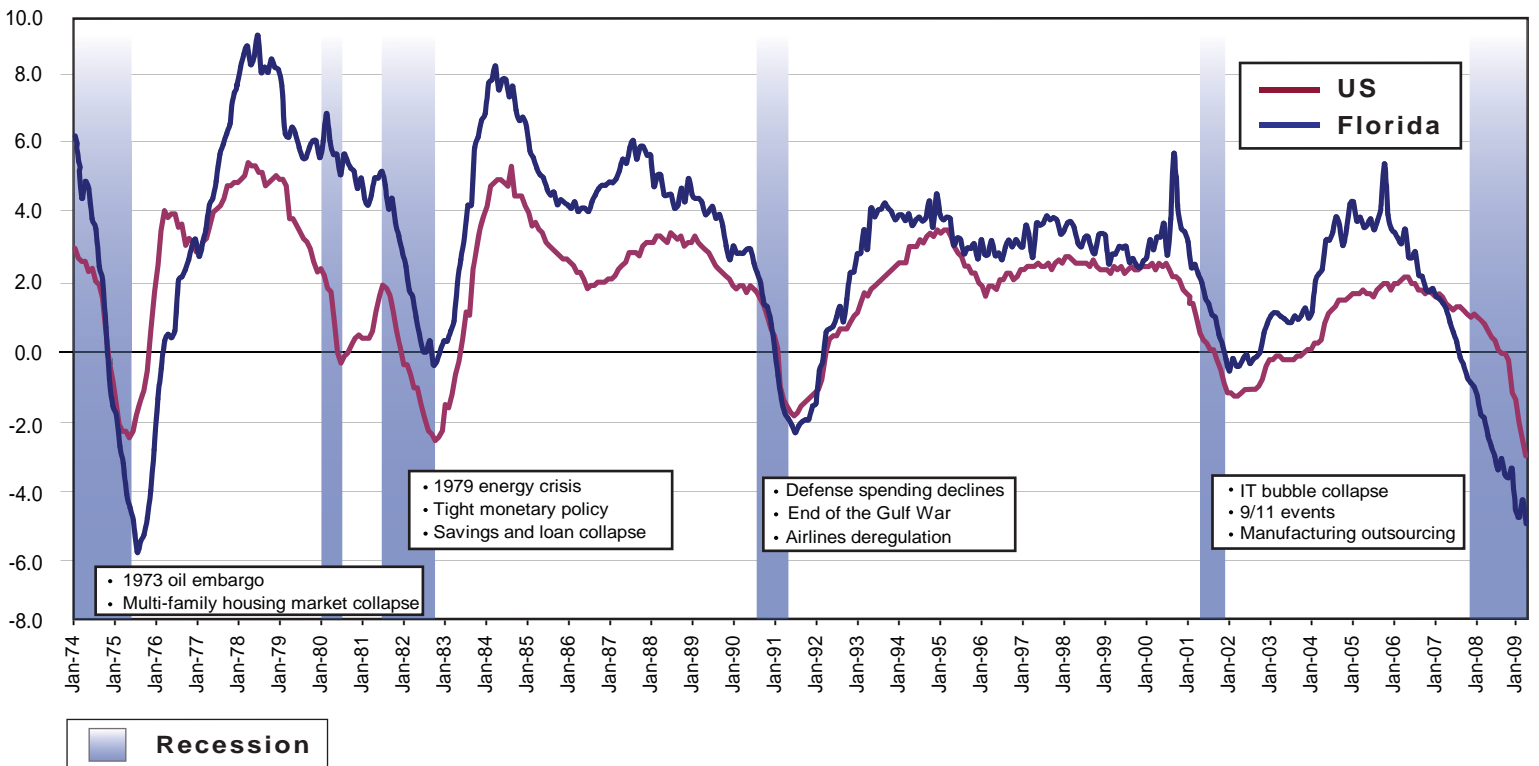
Florida and United States Labor Statistics and Recessionary Periods January 1974 - February 2009

Unemployment Rates



Source: Florida Agency for Workforce Innovation, Labor Market Statistics Center, Local Area Unemployment Statistics Program, in cooperation with the U.S. Department of Labor, Bureau of Labor Statistics. Prepared March, 2009 (seasonally adjusted)

Total Nonagricultural Employment Annual Job Growth Rates



Source: Florida Agency for Workforce Innovation, Labor Market Statistics Center, Current Employment Statistics Program, in cooperation with the U.S. Department of Labor, Bureau of Labor Statistics. Prepared March, 2009 (not seasonally adjusted)