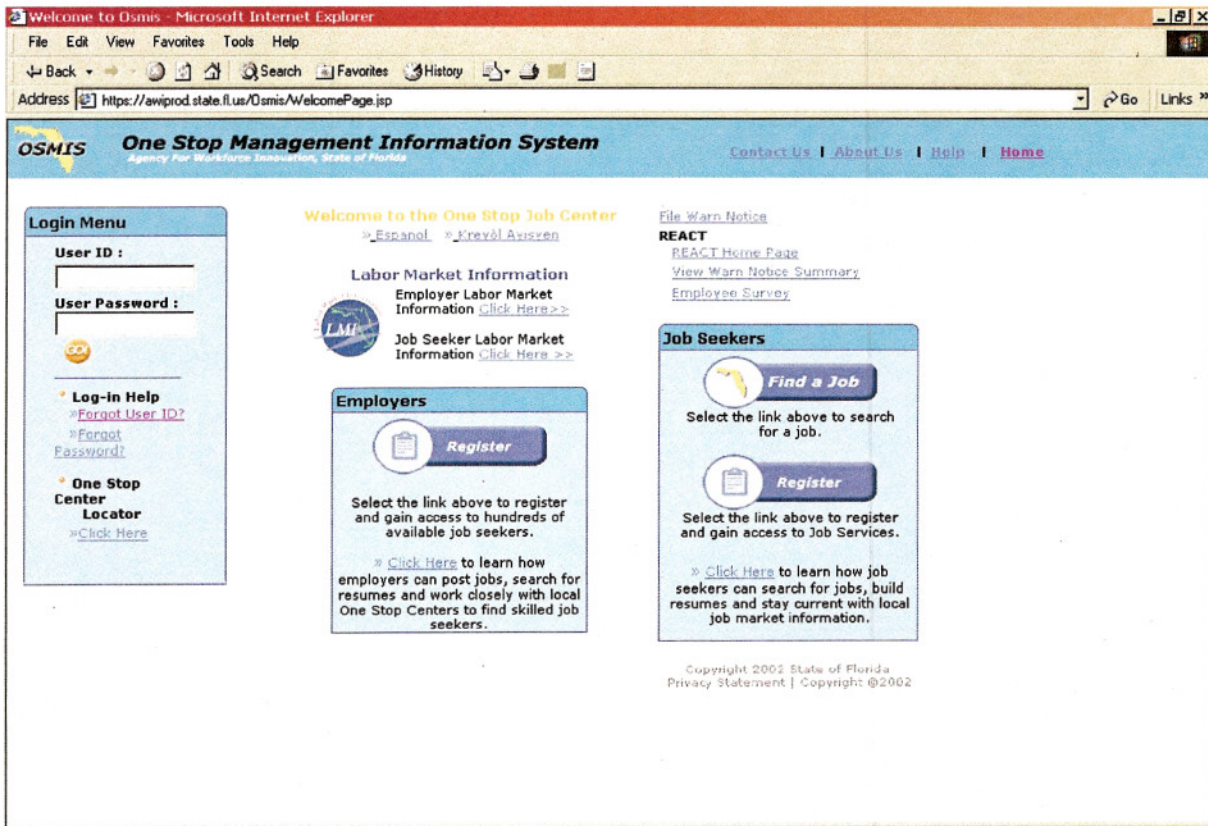


# DHP WIA CASE MANAGEMENT

## Log-in Procedures

Access the internet, then type in the OSMIS address:  
<https://osmis.state.fl.us/Osmis/WelcomePage.jsp>

The Welcome page looks like this:



**Enter User ID and User Password, and then click on “GO.” Note the User ID will remain the same during the life of a contract. The User Password can be changed after the first login.**