

# *Steinhatchee 2008 Vision Plan*

*Steinhatchee Waterfronts Partnership Program in Partnership with Taylor  
County Board of Commissioners*



*Waterfronts Florida*  
PARTNERSHIP PROGRAM

*This report funded in part by the Florida Department of Environmental Protection, Florida Coastal Management Program, pursuant to National Oceanic and Atmospheric Administration Award Number 08-DR-98-03-72-01-003. The views expressed herein are those of the author and do not necessarily reflect the views of the State of Florida, NOAA, or any of its sub agencies. August 2008.*



## ACKNOWLEDGEMENTS

---

The Taylor County Board of Commissioners submitted an application to the Department of Community Affairs in early 2007 on behalf of the community of Steinhatchee located at the southern edge of the county in efforts to receive the honor of being a state-designated Waterfronts Florida Partnership Community. Under the direction of the Board of Commissioners which included: then Chairman Malcolm Page, Rudolph Parker, Clay Bethea, Mark Wiggins, and Patricia Patterson, and County Administrator Jack Brown, the County was awarded this designation in May 2007. Without their support, this designation would not have been possible for the community of Steinhatchee.

Members of the Steinhatchee community who have been involved in the Steinhatchee Waterfronts Florida Program from the very beginning- prior to submitting the initial application seeking designation throughout the entire visioning process include: Rhoda Moehring, Pam Wessell, Ed Wessell, Stan Ridgeway, and Dean Fowler. Special thanks to former Steinhatchee resident Rob Frankle, who helped rally support in the early stages of the partnership; Ann Spence Boy, who made sure the Partnership always had a meeting space, and Linda Wicker and Dewey Hatcher who have always helped rally support for Steinhatchee projects supported by the Partnership. Many thanks to Bonnie Heaton for her awesome pictures used in Waterfronts Partnership-supported grant applications, and Sue Symrnios for contributing extensive historical data. FAMU architectural landscaping students under the direction of Professor Matthew Powers provided new eyes and ideas to help create our vision. And a special thank you to Jackie Koeller for her assistance in putting together graphics and visuals for Partnership projects, and Ross Morrell (retired from the Florida Bureau of Historic Preservation) for his historical and archaeological contributions.

Many, many thanks to Waterfronts Florida Program Coordinator Shawna Beji and Waterfronts Florida Program Planner Joshua Wilkes for their guidance and assistance. A special thanks to former Waterfronts Florida Program Coordinator Jennifer Carver and Program Planner Michael Conrad who encouraged and inspired us to be a Waterfronts Florida Partnership Community. Thank you to Linda Lampl of Lampl Herbert Consultants – we could not have accomplished the successful completion of the Steinhatchee visioning process without her experience and patience. She is a wealth of information!

Finally, many thanks to the earlier designated Waterfronts Florida Communities and Program Managers whose successes paved our way.

Melody Cox, Program Manager  
Steinhatchee Waterfronts Partnership  
August 4, 2008

## TABLE OF CONTENTS

---

LIST OF ACRONYMS	III
EXECUTIVE SUMMARY	v
INTRODUCTION	1
THE STEINHATCHEE WATERFRONTS FLORIDA DESIGNATED AREA	3
THE STEINHATCHEE PARTNERSHIP VISION	4
The Steinhatchee Waterfronts Florida Vision 2018	4
The Waterfronts Florida Partnership Program Kick Off Meeting	5
The Florida A&M University Design Team	5
The Summer 2008 Visioning Process	6
Hazard Mitigation:Prevent Loss from Disaster	7
Protect Environmental and Cultural Resources	8
Provide Public Access to the Waterfront Area	9
Economic Revitalization:Enhance the Waterfront Economy	11
CREATING THE FUTURE – THE IMPLEMENTATION PLAN	14
Goals, Objectives, and Strategies by Area of Priority	14
Organization Development	14
Hazard Mitigation	15
Environmental and Cultural Resource Protection	16
Public Access	18
Economic Revitalization	19
Visual Representations	21

---

## CONTENTS

---

Appendix 1 Stories Along the Steinhatchee River by Meredith Lee	115
Appendix 2 Steinhatchee Waterfronts Florida Partnership Map of Designated Area	127
Appendix 3 Results of the September 2007 Steinhatchee Community Center Meetings	129
Appendix 4 Florida A&M University Visioning Project - Renderings and Materials	133
Appendix 5 The Visioning Process	149
Appendix 6 Table of Applications and Awards	191
Appendix 7 The Steinhatchee Waterfronts Partnership The Organizational Chart	193
Appendix 8 Steinhatchee Waterfronts Florida Partnership Bylaws	195

---

## LIST OF ACRONYMS

---

AARP- American Association of Retired Persons  
BBWA- Big Bend Water Authority  
BoCC- Board of County Commissioners  
CPI- Coastal Partnership Initiative  
CRA- Community Redevelopment Agency  
CSA- Community Supported Activity  
DCA- Florida Department of Community Affairs; also FDCA  
DEP- Florida Department of Environmental Protection; also FDEP  
ECRC- Environmental and Cultural Resource Committee  
ERC- Economic Revitalization Committee  
EMM - Taylor County Emergency Management  
ERCR- Environmental Resources/ Cultural Resources  
FAMU- Florida Agricultural & Mechanical University  
FCT- Florida Communities Trust  
FBIP- Florida Improvement Program  
FDCA- Florida Department of Community Affairs; also DCA  
FDEP- Florida Department of Environmental Protection; also DEP  
FDOT- Florida Department of Transportation; also DOT  
FRDAP- Florida Recreational Development Assistance Program  
FWC- Florida Fish and Wildlife Conservation Commission  
HMC- Hazardous Mitigation Committee  
JA- Junior Achievement  
NFRPC- North Florida Regional Planning Council  
OCHP- Office of Cultural and Historical Programs  
OGT- Office of Greenways and Trails  
OTTED- Office of Tourism, Trade and Economic Development  
PAC- Public Access Committee  
SCC- Steinhatchee Chamber of Commerce

---

SERT- State Emergency Response Team  
SO- Sheriffs Office  
SPB- Steinhatchee Projects Board  
SR- State Road  
SRWMD- Suwannee River Water Management District  
SWUP- Surface Water Use Policy  
TBD- To Be Determined  
TBOCC- Taylor County Board of County Commissioners  
TCCC- Taylor County Coastal Committee  
TCGC- Taylor County Grants Coordinator  
TCHC- Taylor County Historical Society  
TCHD- Taylor County Health Department  
TDC- Tourism Development Council  
UF- University of Florida  
U.S.- United States  
WFPP- Waterfronts Florida Partnership Program

---

## EXECUTIVE SUMMARY

---

Steinhatchee is located at the mouth of the Steinhatchee River in an unincorporated area along the southern coast of Taylor County, some 38 miles from Perry, the county seat. The community historically was associated with commercial fishing, sponging, economic activities related to timber products, and, more recently, with recreational and sportfishing.

Steinhatchee experienced dramatic changes between 1994 and 2006 from natural and human-made events that included the Storm of the Century (1993), the Florida Net Ban (1994), and, more recently, the real estate boom and bust (2000-2006). Each of these situations undermined the community's economy, contributed to the demise of Steinhatchee's working waterfront, and led to the loss of access to the river and the Gulf of Mexico from publicly owned property at Steinhatchee's shores.

In 2007 the Taylor County Board of County applied to the Florida Department of Community Affairs for designation of Steinhatchee as a Waterfronts Florida Partnership Community. The Waterfronts Florida Partnership Program (WFPP) provides technical assistance to help coastal communities with the work of revitalizing working waterfronts for commercial and recreational uses.

The Steinhatchee Waterfronts Florida Partnership achieved designation and commenced operations in May 2007. Committees were formed to begin focus on the four WFPP priority areas – economic revitalization, environmental and cultural resources, hazard mitigation, and public access. Taylor County provided help with grant applications that to date have resulted in awards totaling \$221,000 from state programs and grants pending in the amount of \$7.8 million. These individual projects call for development of a public fishing pier; provision of additional parking and playground equipment; acquisition of public access sites, and research that is expected to support creation of a marina with a public boat ramp and public boat slips.

The Steinhatchee Waterfronts Florida Partnership sponsored a series of workshops in June and July 2008 to craft a vision with the community. Goals, objectives, and preliminary strategies have been developed. The Partnership will sponsor a get together in August to set priorities for implementation of the vision; the No. 1 priority is expected to focus on work to provide access to the waterfront for the community, visitors, and tourists.

This vision document provides an overview of the community, its history, the visioning process, and Steinhatchee's goals, objectives, and strategies related to the WFPP priority areas. The organizational chart sets out the structure of the Steinhatchee Waterfronts Florida Partnership and its relationship to the Taylor County Board of County Commissioners and the Steinhatchee Projects Board. A series of photographs provides a pictorial essay on the Steinhatchee community.



## *MISSION STATEMENT*

### *of the Steinhatchee Waterfronts* *Florida Partnership Committee*

- Provide the citizens of Taylor County, Steinhatchee and the many visitors to the area public access to the Steinhatchee River and the Gulf of Mexico ensuring for recreation and the economic revitalization of the waterfront community.
- Develop trails, greenways, parks and open spaces in the Steinhatchee Community providing both recreation and the preservation of the native habitat and environment.
- Provide for a safe community by developing a hazardous mitigation plan to be incorporated into the county plan, addressing natural and man-made disasters and pre and post-disaster recovery measures and standards ensuring continuity of operations.
- Strive to maintain the historical and cultural integrity of the waterfronts area, preserving the heritage of the community to ensure tomorrow's Steinhatchee continues the values of "Estee Hatchee-River of Man".



## INTRODUCTION

---

Steinhatchee is located directly on the Gulf of Mexico and the Steinhatchee River at the southwestern edge of Taylor County in Florida's Big Bend. The area is known as the Nature Coast. The adjacent coastal water is designated as an Outstanding Florida Water and is a part of the Big Bend Seagrass Aquatic Preserve which offers protection to the sea grass beds. The Big Bend Saltwater Paddling and the Florida Circumnavigational Trail run adjacent to the Steinhatchee coastline. Steinhatchee Falls is located upstream from the Gulf within the Suwannee River Water Wildlife Management Area. The Big Bend State Wildlife Management Area lies the north of the town. At fifty-six miles, Taylor County has the longest contiguous coastline on the Gulf of Mexico in the State of Florida.

The heritage and name of Steinhatchee is linked to the Steinhatchee River and the Gulf. The economy and culture historically revolve around access to the waterways. Originally known as Esteem Hatchee, the indigenous word for "River of Man", Steinhatchee's long history of human habitation includes prehistoric man dating back from 12,000 BC and pirates from the 15th through 18th century.

Prior to the Second Seminole War in 1842, the area was controlled by Native American consisting of Creeks and Mickasukies. In 1839, Fort Frank Brooke, was constructed by General Zachary Taylor on the Steinhatchee River to remove insurgent Indian groups. General Taylor is Taylor County's namesake. Fort Frank Brooke is known to be one of the last holdout sites during the Second Seminole War.

After 1842, present-day Steinhatchee was known as Dead Man's Bay; the economy was supported by logging and fishing. The settlement was a busy shipping port during the Civil War. In 1879 Dead Man's Bay became known as Stephenville. The community continued on as a shipping port for lumber, fishing, and the turpentine industry; nineteenth century logging crews cut cedar to be shipped south to Cedar Key. In 1926, the name changed for a final time and became known as Steinhatchee. Timber crews cut lumber for our military in World War II. See Appendix 1 "Stories Along the Steinhatchee River."

The fishing trade continued to be the key element of the local economy until the 1994 Constitutional Amendment banned the use of nets in state waters in Florida. This amendment seriously crippled the local economy and with the current lack of public access to the waterways, the Steinhatchee economy has continued to decline. The downturn in the real estate market in 2006 and 2007 and rising fuel prices caused additional hardship on the community.

Yet even with the current lack of public access to the waterways, Steinhatchee and the Taylor County coastline continue to be renowned regionally by commercial and recreational fisherman, scallopers, spongers, crabbers, and boaters.

Local residents seek employment in Perry, the county seat 45 miles to the northeast. Employment opportunities include timber related businesses, a paper mill, the local hospital, and, the school and local government. There are also employment opportunities in retail, restaurant and hotel trade. Some residents have or seek employment at a prison facility in neighboring Lafayette County, 31 miles to the east in Hampton Springs. Residents also seek various types of employment in the neighboring Dixie County. At this time, with the declining economy, employment opportunities can be difficult to find, particularly with the rising fuel costs and the distance required to travel for employment.

Residential construction, in particular condominium and resort development, offered employment opportunities until 2007. Rising property taxes and the decline of the economy has virtually halted residential development in Steinhatchee at this time. It is hoped within the next few years some of these opportunities will return at local sites which have been left vacant by residential developers. It is also hoped public access to the waterways will be obtained by the County which will open up many tourism and recreation-related employment opportunities. Obtaining public access will also bring employment opportunities to the commercial fishing trade which previously thrived in Steinhatchee.

Historically, Steinhatchee was characterized by small houses, many of which are perched alongside State Road 51 that trails the north edge of the Steinhatchee River. In the past, fish houses jutted out over the water, used for off-loading and processing sponges and seafood. Today the vistas include a Victorian-themed resort and colorful waterfront condominiums.

Steinhatchee and the other coastal areas of Taylor and Dixie Counties bore the brunt of the “Storm of the Century” in March 1993. Homes and businesses were damaged and twelve deaths were recorded in the Taylor County communities of Keaton Beach and Dekle Beach. The Steinhatchee community has been fortunate over the past several years and sustained minimal damage from recent hurricanes and tropical storms. With this, hazardous mitigation measures and providing planning for a safe community continue to be priority. In addition to being located in a coastal hazard area vulnerable to hurricanes, tropical storms, and storm surges, Steinhatchee is surrounded by timberlands which are subject to wildfires.



## THE STEINHATCHEE WATERFRONTS FLORIDA DESIGNATED AREA

---

The Florida Department of Community Affairs (FDCA) designated Steinhatchee as one of three communities to enter the Waterfronts Florida Partnership Program for the 2007-2008 cycle. The boundaries of the designated area include much of the settlement from the waterfront to the upland. The area is accessible by State Road 51, multiple local roads, and County Roads 356 and 361; together, the state and local roads form what is known as the Scenic Taylor Coastal Loop that routes drivers through the coastal communities and waterfront areas. The designated Waterfronts area is bounded by the Steinhatchee River at the south; 4th Street West on the north west end of the community, and Doyle Street on the south east end.

The Community Center – built by a partnership between the Steinhatchee Projects Board and the Taylor Board of County Commissioners – is the heart of the community, providing meeting space for the Steinhatchee Projects board, AARP, and other local groups and will soon house the offices of the Waterfronts Florida Partnership and the Steinhatchee River Chamber of Commerce. The Center sits beside the Steinhatchee River, across State Road 51 adjacent to the remnants of the old and new bridges that keep the historic and contemporary connections between Steinhatchee and Jena. Please see Appendix 2 for maps of the Designated Steinhatchee Waterfronts Area. Figure 1 presents the map view familiar to the Steinhatchee Community; Figure 2 presents the map view associated with the state-designated Steinhatchee Waterfronts Florida Partnership. The boundaries are identical.



## THE STEINHATCHEE PARTNERSHIP VISION

---

Community meetings were held at the Community Center in 2007 and 2008 to learn about the waterfronts program, opportunities for changes to the county comprehensive plan, and fishery management. The meetings culminated in the development of a vision for Steinhatchee that includes a town center, waterfront access, and a thriving, resilient water-based economy. Each of the three rounds of visioning worked to consider the Waterfronts Florida priority areas: hazard mitigation, environmental and cultural resources, public access, and economic revitalization. The Steinhatchee Partnership added a fifth priority that focused on the development of the partnership as an organization. Each session is described below.

### THE STEINHATCHEE WATERFRONTS FLORIDA VISION 2018

*Steinhatchee prospers -- the north end of the community along River Side Drive, directly on the Steinhatchee River, serves as a town center. A marina complex is located nearby with shops, restaurants, a maritime museum, community fishing pier with charter boats, parks, and green spaces. The height restrictions in place in Steinhatchee since early in the 21st century remain in force; residential development architecture is subject to the "Florida Cracker Style" that retains the look of this coastal community.*

*A green, walkable, safe community is a reality; the people of Steinhatchee are prepared to face the kinds of disasters that might be visited upon a settlement located in a coastal high hazard zone. The economic revitalization of the community has taken hold, sparked in part by the purchase and management of access for the public to the Steinhatchee River and the Gulf of Mexico, upholding the heritage of the community that grew up beside the "Esteem Hatchee" - River of Man.*

## THE WATERFRONTS FLORIDA PARTNERSHIP PROGRAM KICK OFF MEETING

In September 2007, within weeks of receiving the official Waterfronts Florida designation, Jennifer Carver, the former Waterfronts Florida Program Coordinator, and Shawna Beji, the current Waterfronts Coordinator conducted a community visioning meeting to kick off the Steinhatchee Waterfronts Florida Partnership. Community members gathered at the Steinhatchee Community Center to consider “what makes Steinhatchee special,” identify the local stakeholders, and set out some objectives for a visioning process. The group developed a list of stakeholders and discussed the steps the community will take to move forward with the visioning process. Community members attending repeatedly stressed that obtaining public access was the most critical issue; that the economic revitalization of Steinhatchee depends on public access. See Appendix 2 for the results of the meeting.

## THE FLORIDA A&M UNIVERSITY DESIGN TEAM

Early in the designation the Steinhatchee Waterfronts Florida Partnership committee worked with Florida A & M University on a small visioning project for two specific locations which have community wide support for improvements and/or acquisition. These two sites were the Steinhatchee Community Center and adjacent bridge abutment (which is used as a fishing pier), and the currently closed and vacant Steinhatchee Fish Market. Three community meetings and three committee meetings were held with FAMU architectural teaching staff and students. Multiple options and architectural renderings were designed for each site and presented to the community for ideas and suggestions of future site improvements.

The Partnership conducted a total of six meetings with the FAMU study team. Community priorities were discussed at the first meeting with FAMU. Those in attendance at the meeting determined the Steinhatchee Community Center and the Steinhatchee Fish Market areas were the two priority sites for improvements and development.

A committee was selected to work with FAMU. The committee conducted a more detailed discussion with the FAMU team to develop future visioning and ideas for the sites and talk about community needs.



FAMU returned a second time to conduct a community workshop and present preliminary drawings. Three conceptual plans were designed for each site; the designs were presented by the students. The students had many ideas that had not previously been discussed and those present were pleased with several of the new ideas, one of which was developing smaller park sites throughout the community.

The fourth and fifth meetings were held with the committee. The discussion focused on how the drawings would be revised to accommodate needs brought to light in the community meeting. The committee met for a final time with FAMU before the community presentation and reviewed the drawings. Even though several of the plans are very long range, the committee was pleased with the work of the FAMU team. See Appendix 3 for FAMU renderings and materials.

The final community presentation was held at the Community Center. As discussed at previous meetings, the community supported small parks throughout Steinhatchee. All present supported the idea of having the area surrounding the Steinhatchee Fish Market site serve as a community gathering place and town center. All attendees wanted a walkable community.

## **THE SUMMER 2008 VISIONING PROCESS**

A consulting firm, experienced with preparing visioning plans for coastal communities, worked with the Committee over the summer in 2008, conducting a series of three meetings to focus on development of a community wide vision that focuses on revitalization of the Steinhatchee waterfront over the next 5 to 10 years. The first session considered the accomplishments of Year 1; the second session focused on getting a vision as to what people would like to see happen in Steinhatchee; the third session focused on identifying goals and objectives. The vision addresses the four priority areas established for the Waterfronts Florida Partnership Program, each of which is discussed below; committees have been formed to implement the goals and objectives crafted for each of the priorities. The Steinhatchee Waterfronts Partnership created a fifth priority that focuses the development of the Waterfronts group, its partnership with the Steinhatchee Projects Board, and its relationship with the Board of County Commissioners and other groups that can help with implementation of the vision. See Appendix 4 for a recap of the 2008 visioning process.

Steinhatchee is an action-oriented community that excels in its ability to get focused and get things done. The first-year of work, best described as a project-based initiative that concentrated on development of a funding stream to create public access to the waterfront, protect environmental and cultural resources, and bolster the waterfront economy. The Steinhatchee projects were drawn from community priorities, products, and lessons learned. Please see Appendix 5 for Table of Applications and Awards.

## **HAZARD MITIGATION: PREVENT LOSS FROM DISASTER**

Steinhatchee is familiar with disaster as the community suffered heavy damage in the 1993 Storm of the Century that pummeled Gulf coast settlements with high waves and flooding; the same storm was blamed for death and destruction across the U.S. from tornadoes, ice storms, and unseasonable snow fall. Several years ago, Steinhatchee was without water for several weeks because of a problem with the water supply and water contamination related to local flooding from Hurricanes Charley, Francis, and Jean.

The local assumption is that Steinhatchee needs to be self-reliance in the aftermath of a hurricane or major storm, given its distance from Perry (45 miles), the county seat and only city in Taylor County. The nearest city in adjacent Dixie County is Cross City which is approximately 25 miles. The Hazard Mitigation / Resiliency Committee is investigating disaster-related topics that include:

- Notification procedures
- Reentry Procedures
- Inventory of generators
- Disaster evacuation routes
- Water supply
- Critical sites necessary for the Continuity of Operations and disaster recovery
- Transportation during an evacuation
- Evacuation Shelter
- Hazardous material and chemical spills
- Develop brochures on emergency evacuation procedures that address pre- and post-disaster recovery policies and actions, for distribution throughout the community
- Promote healthy communities through health seminars, adequate public health services, and EMS.

## PROTECT ENVIRONMENTAL AND CULTURAL RESOURCES

The water-based Steinhatchee community is flanked by environmental treasures that include the Steinhatchee River, the Gulf of Mexico, the Steinhatchee Falls, and areas managed for wildlife habitat. The Waterfronts Partnership is working toward development of an inventory of environmental features and cultural resources to form a foundation for identifying relationships with other Waterfronts priority topics. The group will develop a preliminary account of the history of the area as part of that project.

The Partnership is also aware that the decline of the commercial fishing industry may be of cultural and historical significance. The Steinhatchee Fish Market, the last of the commercial establishments in this community, is currently vacant and it is hoped it will be purchased with funding assistance from the Florida Communities Trust (FCT). The property includes the building which housed the fish market, offloading facilities, and parking. Plans include public access for boats, dock space for charter captains, waterfront boardwalk, a maritime museum, additional parking facilities, and other recreational amenities such as a small playground and picnic pavilions.

The Waterfronts Partnership is involved in the development and funding of background studies in progress as part of plans to build a marina with public slips at the Gulf edge of Steinhatchee. The research considers water quality and wetlands issues.

The Waterfronts Partnership supported applications for multiple grants submitted by the Taylor County Board of County Commissioners to provide funding for environmental and cultural resources. A listing of these grants is included under “Providing Public Access in the Waterfront Area” or Appendix 5.

The Steinhatchee history and culture revolves around the waterfronts; the grants submitted for public access reflect this heritage. The Steinhatchee Fish Market grant application to Florida Communities Trust is of particular significance to the history and culture of Steinhatchee.





Members of the Partnership are also researching the area where Fort Frank Brooke was located and will be submitting grant application to the Florida Bureau of Historic Preservation for an archaeological assessment and study of this site in the near future.

The Waterfronts Florida Partnership is exploring the addition of elements specific for Steinhatchee to the Taylor County Comprehensive Plan to address recreational surface water use policy (SWUP) such as:

- Marine zoning
- Boating restricted areas
- Manatee protection areas
- Seagrass/shellfish/rookery protection areas
- Mooring fields.

The Partnership is monitoring the development of the “Stan Mayfield Working Waterfronts Program” that will earmark up to \$7.5 million each year for the purchase of waterfront property in Florida beginning with the 2009-2010 grant application cycle. The program will be administered by FCT; however, the criteria and funding will be operated under a separate set of rules. The new program may be a provide funding source for additional purchases of waterfront property in Steinhatchee that could contribute to restoration of aspects of the community’s economic and cultural heritage at the waterfront.

## **PROVIDE PUBLIC ACCESS TO THE WATERFRONT AREA**

The waterfront is the heart of Steinhatchee and its sister community, Jena, on the south side of the river. Restaurants and two private marinas provide coastal fare and, in season, stores and marinas offer supplies for harvesting and help with shucking scallops. The two small marinas that remain open are private, for-profit businesses; one marina offers boating services only to those individuals who rent monthly boat storage slips at the establishment. Waterfront docks and boat launches are privately owned and there are currently no publicly owned docks or boat ramps/launches in Steinhatchee.

Former marinas, docks, and launches were bought and closed to the public in the real estate boom in 2003-2006. The abutment from the old bridge that once connected Steinhatchee and Jena, adjacent to Steinhatchee Community Center, is currently used informally as a fishing pier; there are no designated public piers at this time. Taylor County has a heavily used public boat ramp located fifteen miles north of Steinhatchee at Keaton Beach. Dark Island, 13 miles from Steinhatchee, has a public boat launch that can accommodate ten trucks and boat trailers and can only be used during high tide. The county has one other small public boat ramp located on the Aucilla River approximately 55 miles from Steinhatchee. There are two

small, state-owned launches that offer access to the Gulf from Dulles Creek, and Hagan's Cove; these areas can accommodate only air boats and smaller watercraft on high tide. At the northwest end of the county the state-owned Econfina River State Park provides access to the Econfina River, and Aucilla River Park offers limited access to the Aucilla River. A Dixie County boat ramp located at Jena on the south side of the Steinhatchee River serves Dixie County and the entire southern coastal area of Taylor County. This site accommodates small boats and offers limited parking.

The Partnership's priorities for public access include the following projects and concepts:

- Public ramps to accommodate small-boat access to the river and the Gulf of Mexico for fishing, scalloping, and pleasure-boating
- Waterfront walkways and boardwalks to allow the public to get close to the water
- Trail between Keaton Beach (at the north) and Tennille (at the east) to promote foot traffic through Steinhatchee from other coastal communities and to Steinhatchee Falls
- Canoe & Kayak Trailhead
- Parking and shuttle service to handle tourist and weekend traffic, particularly during scallop season, fishing tournaments, and other special events
- Explore possible access to street-end property and right-of-ways to create parks, green space, and public places to launch boats, and get to the water.
- Recreation improvements to the Steinhatchee Community Center and outdoor public restrooms
- Commercial and recreational fishing marina
- Improvements to old bridge abutment adjacent to the Steinhatchee Community Center to be used as a fishing pier
- Community gathering place on the waterfront.

The Waterfronts Partnership supported applications for multiple grants submitted by the Taylor County Board of County Commissioners to provide funding for public access and outdoor recreation. The grants include:

- Request for \$135,000 from the Florida Recreation Development Assistance Program (FRDAP) and the Florida Department of Environmental Protection (FDEP) to fund purchase and installation of playground equipment and, outdoor restrooms at the Community Center

- To include partial funding for improvements to the old bridge abutment located across the street from the Community Center
- ❑ Request for \$45,000 from the Coastal Partnership Initiative (CPI) to complete the improvements at the old bridge abutment
- ❑ Request for \$1.4 million from the Office of Greenways and Trails (OGT) for acquisition of the Palm Grove Marina site to be used as a canoe and kayak trailhead
- ❑ Request of \$6.4 million from Florida Communities Trust for the acquisition of the Steinhatchee Fish Market which has a fishing pier, boat launch, and dock
- ❑ Request of \$45,000 to Florida Boating Improvement Program for Phase II of the proposed Steinhatchee Boat Ramp project located at 4th St. W at a site known as “Woods”. Phase II includes Flushing Model Studies and Wetland Mitigation Plan
- ❑ Request from Florida Department of Transportation (FDOT) for \$650,000 to create an in-town walking trail which will include a waterfront boardwalk.

Taylor County received notice and a contract in June that the FRDAP grant has been awarded; plans for design and construction for improvement to the bridge are expected to begin shortly. Separately, Steinhatchee was recently awarded a grant from the CIP which will allow for the completion of improvements to the bridge abutment. The County has also been awarded the grant for \$45,000 from the Florida Boating Improvement Program for Phase II for the environmental studies required for the “Woods” site. The county had received word Florida Department of Transportation had approved the “in town” walking trail, however, the project is on hold due to state and federal budget issues. The Florida Office of Greenways and Trails is in the process of updating state prioritization maps and Steinhatchee as well as the Taylor County coastline will be included in this update and the prioritization which will open additional future funding opportunities.

The activities and results associated with these grant awards will provide visible evidence – and what is known as a “small win” – to the community that the Waterfronts Partnership can make things happen in Steinhatchee.

## **ECONOMIC REVITALIZATION: ENHANCE THE WATERFRONT ECONOMY**

The Waterfronts Partnership aims to keep Steinhatchee “a place for people with all sizes of pocket books.” The planning group intends to work toward keeping the single-family home- - not condominiums -- as the most prominent type of structure in Steinhatchee. The group

also recognizes that Steinhatchee is a town without a center, a situation that sparked recent discussion on where to create a town center – up the river away from the recently built condo complexes or off the river within the designated waterfronts area.

Partnership projects and concepts related to revitalization of the Steinhatchee waterfront economy include:

- Develop a town center
- Create public access
- Investigate tax increment funding or other options to fund projects in Steinhatchee from existing tax dollars
- Investigate funding available from the Tourism Development Council bed tax
- Investigate the benefits and challenges of Steinhatchee's designation as a Brownfield area eligible for economic assistance
- Develop strong relationship with Taylor County Economic Development Council, Taylor County/Perry Chamber of Commerce, and the Steinhatchee Chamber of Commerce
- Explore opportunities to create overlays and architectural guidelines to support the traditional look and feel of Steinhatchee
- Create advertising on U.S. 98 to route travelers to Steinhatchee
- Code enforcement to “clean up” the entrances to Steinhatchee
- Possible grant submission for a grant with Florida Office of Tourism and Economic Development (OTTED) and/or Enterprise Florida for a feasibility study for possible economic opportunities for Steinhatchee, in particular water related tourism and recreation based opportunities
- Promote canoe and kayak tourism and recreation opportunities which supports the tourism trade but does not have a negative impact on the environment
- Research and possibly support state designated “pole and troll” zones
- Work closely with and seek assistance from appropriate agencies which support water related tourism and economic development opportunities. Agencies may include but not be limited to the Office of Tourism, Trade and Economic Development (OTTED), Florida Department of Community

Affairs (DCA), Florida Fish and Wildlife Conservation Commission (FWC), Suwannee River Water Management District, and Florida Department of Environmental Protection

- Promote outdoor festivals geared to celebrating the waterfronts and local culture.

Partnership members generally represent a number of organizations in Steinhatchee including the long-standing Projects Board that sponsors annual events and partnered with the Taylor County Board of County Commissioners to build and maintain the Community Center. Other members have been active over the last year in formation of a Steinhatchee Chamber of Commerce that will partner with the Pure Water Wilderness Chamber Coalition in Dixie, Gilchrist, and Levy Counties to the south.

The Waterfronts Partnership will explore comprehensive plan options to support economic revitalization of the waterfront including:

- Waterfront specific zoning district (e.g. marine commercial; Marine industrial; Marine mixed use)
- Overlay districts
- Visual access.

Similarly, the Partnership is exploring how it might support the creation of regulatory incentives and criteria that encourage the preservation of recreational and commercial working waterfronts. Such incentives might include:

- Zoning
- Matching public/private funds
- Design standards
- No net loss policy
- Rights of way preservation.

The Waterfronts group is investigating the possibility of partnering with the Taylor County Board of County Commissioners to request a Rural Infrastructure Fund Grant and other opportunities available through Enterprise Florida.

# CREATING THE FUTURE – THE IMPLEMENTATION PLAN

---

The Steinhatchee Waterfronts Florida Partnership began work on implementation of its vision July 31. The community spent time spinning big dreams, then stepped back and confirmed that its top priorities are to 1) create a town center and 2) provide public access to the water. The group recognized a number of factors will spell the difference between success and frustration; these factors include:

- Development of a sustainable organization
- Preparation and responses to coastal and other types of hazards
- Protection and awareness of environmental and cultural resources
- Provision of public access to the water
- Development of a sustainable economy in a rural coastal area.

The participants developed goals and objectives for each part of the Waterfronts Florida priority areas and opted to add organizational issues to the work of the Partnerships steering committee. The Implementation Plan is intended to guide revitalization and support activities in Steinhatchee through 2018.

The goals, objectives, and strategies are set out below by priority area. Separate strategy sheets – each with preliminary steps for action – were created to provide a “workbook” for the individual committees. See Appendix 7 for strategy sheets.

## GOALS, OBJECTIVES, AND STRATEGIES BY AREA OF PRIORITY

*Provide the citizens of Steinhatchee with an organization structure and mission that focuses on water-related topics to ensure continued revitalization of the waterfront.*

### Organization Development

GOAL 1     Develop a sustainable organization for Steinhatchee Waterfronts Florida Partnership

Objective 1.1     Ensure a focus on waterfront topics and issues

Strategy 1.1.1     Establish a formal relationship with the Projects Board, 501 (c)(3) organization with 20 years of experience

Strategy 1.1.2     Identify potential partners by priority areas of interest

- Objective 1.2 Ensure support for the work of the partnership
  - Strategy 1.2.1 Develop a pool of volunteers for projects and tasks related to Waterfronts Partnership
  - Strategy 1.2.2 Develop a pool of potential leaders to succeed current directors and committee leaders of the Waterfronts Florida Partnership, as appropriate
- Objective 1.3 Create awareness of the Steinhatchee Waterfronts Partnership
  - Strategy 1.3.1 Establish a Steinhatchee Waterfronts Florida Partnership office
  - Strategy 1.3.2 Develop a media campaign

*Provide for safe community by developing a hazardous mitigation plan to be incorporated into the county plan, addressing natural and man-made disasters and pre and post-disaster recovery measures and standards ensuring continuity of operations.*

## Hazard Mitigation

- GOAL 2 Develop local capacity to prevent, manage, and mitigate emergency situations
  - Objective 2.1 Ensure availability of local resources to prevent, manage, and mitigate emergencies in Steinhatchee
    - Strategy 2.1.1 Work with the Taylor County Emergency Management Services to learn about existing resources in the Steinhatchee area
    - Strategy 2.1.2 Visit with local government staff to discuss options to develop and/or improve access to county wide resources to supplement Steinhatchee capacity
    - Strategy 2.1.3 Work with state and local agency personnel to learn about how to prepare for, prevent, and/or mitigate emergency situations
  - Objective 2.2 Develop a resilient, self-reliant community
    - Strategy 2.2.1 Develop awareness among citizens and visitors regarding types of hazards that might occur in Steinhatchee
    - Strategy 2.2.2 Create a process to notify local residents and visitors of immediate and/or pending incident or hazard

- Strategy 2.2.3 Work with local government officials to establish a communication center and/or communication protocols to be activated in an emergency
- Strategy 2.2.4 Develop local knowledge of primary and contingent evacuation routes and of procedures for re-entering the community after an emergency or disaster
- Strategy 2.2.5 Promote a healthy and prepared community through seminars on health issues and public health services in emergency / disaster situation and on disaster preparedness
- Strategy 2.2.6 Develop a hazard mitigation plan for Steinhatchee, to be incorporated in the Taylor County Local Government Comprehensive Plan

*Strive to maintain the historical and cultural integrity of the waterfronts area, preserving the heritage of the community to ensure tomorrow's Steinhatchee continues the values of "Estee Hatchee- River of Man".*

### **Environmental and Cultural Resource Protection**

- GOAL 3A Promote awareness and understanding of natural resource treasures in the Steinhatchee area
  - Objective 3A.1 Protect and improve water quality for drinking, recreation, and coastal and inland fishery and environmental resources
    - Strategy 3A.1.1 Create map of environmental features and designations in the Steinhatchee area
    - Strategy 3A.1.2 Invite agency staff to discuss options for protection and use of the Steinhatchee River and inshore Gulf of Mexico
    - Strategy 3A.1.3 Encourage adoption of the "Clean Marina Program" to improve and protect quality of water in the Steinhatchee River and the Gulf of Mexico
    - Strategy 3A.1.4 Explore options for adding policies regarding marine zoning, a mooring field, and protected areas for manatees, sea grass, shellfish, and rookeries to the Taylor County Comprehensive Plan
    - Strategy 3A.1.5 Establish a cleanup-day to pick up trash along the river and Gulf coast waterfront



- Strategy 3A.1.6 Educate the public and developers on new technologies for septic systems and the importance of regular maintenance of existing septic systems
- Strategy 3A.1.7 Develop partnership with Taylor County government to support code enforcement at Steinhatchee
- Strategy 3A.1.8 Investigate need and options for updated water and sewer facilities at Steinhatchee
- Objective 3A.2 Develop awareness and use of research and local knowledge about natural resources at Steinhatchee and the Big Bend area
  - Strategy 3A.2.1 Use scientific research within or adjacent to the community, completed or underway
  - Strategy 3A.2.2 Develop partnerships with scientists interested in coastal processes and coastal communities / economies
  - Strategy 3A.2.3 Partner with sister-Waterfronts Florida communities in the Big Bend to sponsor a symposium on coastal sciences
- GOAL 3B Identify, protect, preserve, and promote Steinhatchee’s cultural resources
  - Objective 3B.1 Ensure awareness and respect for Steinhatchee’s heritage
    - Strategy 3B.1.1 Conduct a cultural resource assessment to identify significant pre-historic and historic sites and resources at Steinhatchee
    - Strategy 3B.1.2 Identify location and conduct site assessment of Fort Frank Brooke
    - Strategy 3B.1.3 Partner with local organizations to develop a program to collect oral histories of individuals involved in fishing, timbering, and other local industries
    - Strategy 3B.1.4 Partner with Taylor County Board of County Commissioners and others to develop a maritime museum and educational kiosks at the Steinhatchee Fish Market, pending purchase of property through the Florida Communities Trust (FCT)
  - Objective 3B.2 Enhance the quality-of-life in Steinhatchee
    - Strategy 3B.2.1 Explore planning options to protect the local viewshed and architectural traditions
    - Strategy 3B.2.2 Work with local school officials to assess the need for in-school and after-school programs for Steinhatchee youths

Strategy 3B.2.3 Create a recycling program with incentives for community participation

*Develop trails, greenways, parks and open spaces in the Steinhatchee Community providing both recreation and the preservation of the native habitat and environment.*

## **Public Access**

GOAL 4A Acquire additional or re-purpose county owned waterfront property for public use

Objective 4A.1 Ensure public access to the Steinhatchee River and the Gulf of Mexico for fishing, scalloping, pleasure-boating, enjoyment of nature, and recreation

Strategy 4A.1.1 Partner with Taylor County government; federal, state, regional agencies to identify and purchase waterfront property at Steinhatchee

Strategy 4A.1.2 Partner with Taylor County government and adjacent property owners to explore options and agreements to re-purpose county owned street ends and other sites as mini-parks and/or launch areas for canoes and kayaks

GOAL 4B Develop a network of public access points, facilities, and services to support water-based and upland activities

Objective 4B.1 Ensure access to public property, waterfront vistas, and upland native habitat and resources

Strategy 4B.1.1 Renovate existing facilities on purchase or construct new buildings and boat slips at undeveloped property, as land is brought into public ownership

Strategy 4B.1.2 Establish boat ramps to accommodate small boats

Strategy 4B.1.3 Create waterfront boardwalks, walkways, and gazebo(s) to allow the public to get close to the river and bay

Strategy 4B.1.4 Make improvements to old bridge abutment for use as a public fishing pier

Strategy 4B.1.5 Develop trails, greenways, parks and open spaces in the Steinhatchee Community

Strategy 4B.1.6 Establish a “chain-of-parks” by connecting a series of greenways, trails, footpaths, and open space to link the existing parks, street-ends, and new properties as these become available

- Strategy 4B.1.7 Establish a trail between Keaton Beach (at the north) and Tennille (at the east) to promote foot traffic through Steinhatchee from other coastal communities and to Steinhatchee Falls
- Strategy 4B.1.8 Create a waterfront trailhead for canoe and kayak access
- Strategy 4B.1.9 Partner with Taylor County government and local organizations to provide outdoor public restrooms
- Strategy 4B.1.10 Develop off-water parking and shuttle service to handle traffic associated with weekend visitors, winter tourists, fishing tournaments, scallop season, and special events

Objective 4B.2 Develop awareness of opportunities for public access to waterways and upland natural resources

- Strategy 4B.2.1 Partner with local organizations to develop a series of markers and kiosks that identify the importance and characteristics of specific resources
- Strategy 4B.2.2 Establish annual waterfront-upland walkabout to encourage local residents and tourists to visit natural areas
- Strategy 4B.2.3 Partner with stated, regional, and local government and local organizations to create a guide to water-based activities and upland resources

*Provide the citizens of Taylor County, Steinhatchee and the many visitors to the area public access to the Steinhatchee River and the Gulf of Mexico ensuring for recreation and the economic revitalization of the waterfront community.*

## **Economic Revitalization**

GOAL 5A Develop economic opportunities and capacity at Steinhatchee

Objective 5A.1 Create partnership with local government and state agencies to assess economy and identify new opportunities at Steinhatchee

- Strategy 5A1.1 Develop strong relationships with the Taylor County Board of County Commissioners and the Taylor County Economic Development Council
- Strategy 5A1.2 Work with local officials to obtain Rural Infrastructure Grant from Enterprise Florida through the Governor's Office of Tourism, Trade and Economic Development (OTTED) to conduct baseline research

Objective 5A.2 Strengthen existing businesses and establishments

Strategy 5A2.1 Inventory and map local businesses

Strategy 5A2.2 Partner with district commuter services to establish van pool and car pools for individuals who travel to and from Steinhatchee for work

Objective 5A.3 Create new jobs and foster development of local talent

Strategy 5A3.1 Partner with FAMU, UF, and Florida Procurement Technical Assistance Center, to offer business and entrepreneurial workshops at Steinhatchee

Strategy 5A3.2 Survey residents regarding business and job interests

Strategy 5A3.3 Develop local business team to mentor existing and new business owners

Strategy 5A3.4 Investigate potential to establish Junior Achievement (JA) program at Steinhatchee for school age young people

GOAL 5B Establish a town center at Steinhatchee

Objective 5B.1 Create a focal point for waterfront activities and central business district

Strategy 5B1.1 Partner with the Taylor County Board of County Commissioners to purchase the Steinhatchee Fish Market

Strategy 5B1.2 Partner with the Taylor County Board of County Commissioners to purchase the Ideal Marina

Objective 5B.2 Provide maximum public access to Steinhatchee waterfront for community and for visitors / tourists, boating and non-boating.

Strategy 5B2.1 Work with the FDOT to re-route SR 51 to foster the development of pedestrian traffic in the town center at SR 51 and County Road 361

Strategy 5B2.2 Establish waterfront and over-water walkway to be managed by Taylor County

The Program Manager and consultant developed sample strategies and action plans for goals associated with Public Access and Hazard Mitigation. See Appendix 7 for copies of sample strategy and action plans.

---

The Partnership will meet in August to review its final priorities, strategies, and “next steps” for action; agreed upon responsibilities, identify partners and funding options, and timeline.

---

**THIS PAGE LEFT  
BLANK INTENTIONALLY**

---

**Sample Strategy and Action Plans for  
Public Access and Hazard Mitigation**

# STEINHATCHEE WATERFRONTS FLORIDA PRIORITY ISSUE AREA

## Organization Development

### Goal 1: Develop a sustainable organization

		Timeline				
		2008	2009	2010	2011	2012
<b>Objective 1 -- Ensure a focus on waterfront topics and issues</b> <b>Strategy 1.1 -- Establish a formal relationship with the Projects Board, a 501(c)(3) organization with 20 years of experience</b>						
<b>Action</b>	<b>Lead Role</b>	<b>Potential Partners</b>	<b>Funding Options</b>	<b>Challenges</b>		
Meet with Projects Board Directors  Identify structure to benefit both the Steinhatchee Waterfronts Partnership and the Project Board	Waterfronts Partnership	Steinhatchee Project Board	Community supported activity		-----	-----



**STEINHATCHEE WATERFRONTS FLORIDA PRIORITY ISSUE AREA**  
**Organization Development**

**Goal 1: Develop a sustainable organization**

Objective 1 -- Ensure a focus on waterfront topics and issues <b>Strategy 1.2 -- Identify potential partners by priority area of interest</b>		Timeline							
		2008	2009	2010	2011	2012			
Action	Lead Role	Potential Partners	Funding Options	Challenges	2008	2009	2010	2011	2012
Create a list of potential organizational partners with common interests  Visit with leadership / committee(s) from other organizations	Waterfronts Partnership	Chamber of Commerce SPB AARP  Taylor County BoCC  Tourism Development Council	Community Supported		-----	-----	-----		

**STEINHATCHEE WATERFRONTS FLORIDA PRIORITY ISSUE AREA**  
**Organization Development**

**Goal 1: Develop a sustainable organization**

		Timeline							
		2008	2009	2010	2011	2012			
Objective 2 -- Ensure support for the work of the Partnership									
<b>Strategy 2.1 -- Develop a pool of volunteers for projects and tasks related to Waterfronts Partnership</b>									
Action	Lead Role	Potential Partners	Funding Options	Challenges	2008	2009	2010	2011	2012
Establish a role for coordination of volunteers  Hold a meeting to recruit volunteers  Maintain a list of volunteers and tasks	Waterfronts Partnership	Steinhatchee Project Board	Community supported activity		-----				
		Steinhatchee Chamber of Commerce			-----				
					-----				

# STEINHATCHEE WATERFRONTS FLORIDA PRIORITY ISSUE AREA

## Organization Development

### Goal 1: Develop a sustainable organization

		Timeline				
		2008	2009	2010	2011	2012
Objective 2 -- Ensure support for the work of the Partnership <b>Strategy 2.2 -- Develop a pool of potential leaders to success current directors and committee leaders of the Waterfronts Partnership</b>						
Action	Lead Role	Potential Partners	Funding Options	Challenges		
Create a volunteer position for leadership development  Contact other organizations in the community for names of prospective leaders	Waterfronts Partnership	WFPP University of Florida TBOCC  SPB WFPP University of Florida TBOCC	Scholarships through UF leadership development program		-----	-----

**STEINHATCHEE WATERFRONTS FLORIDA PRIORITY ISSUE AREA**  
**Organization Development**

**Goal 1: Develop a sustainable organization**

		Timeline				
Objective 3 -- Create awareness of the Steinhatchee Waterfronts Partnership		2008	2009	2010	2011	2012
Strategy 3.1 -- Establish a Steinhatchee Waterfronts Florida Partnership Office						
Action	Lead Role	Potential Partners	Funding Options	Challenges		
Identify space for co-locating with other Steinhatchee organizations	Waterfronts Partnership	Steinhatchee Project Board	Community supported activity			
Obtain agreements for space rental or donation		Chamber of Commerce Steinhatchee Project Board				

**STEINHATCHEE WATERFRONTS FLORIDA PRIORITY ISSUE AREA**  
**Organization Development**

**Goal 1: Develop a sustainable organization**

Objective 3 -- Create awareness of the Steinhatchee Waterfronts Partnership							Timeline				
<b>Strategy 3.2 -- Develop a media campaign</b>							2008	2009	2010	2011	2012
Action	Lead Role	Potential Partners	Funding Options	Challenges	2008	2009	2010	2011	2012		
<p>Create flyers that describe Partnership and its "wins"</p> <p>Create a list of organizations / media for distribution</p> <p>Create a flyer for pizza boxes</p>	Waterfronts Partnership	<p>Chamber of Commerce</p> <p>Projects Board</p>	Community supported activity		-----						
					-----						
					-----						

# STEINHATCHEE WATERFRONTS FLORIDA PRIORITY ISSUE AREA

## Hazard Mitigation

Goal 2: Develop local capacity to prevent, manage, and mitigate emergency situations

		Timeline				
		2008	2009	2010	2011	2012
Objective 2.1 -- Ensure availability of local resources to prevent, manage, and mitigate emergencies in Steinhatchee						
<b>Strategy 2.1.1 -- Work with Taylor County Emergency Management Services to learn about existing resources in Steinhatchee</b>						
Action	Lead Role	Potential Partners	Funding Options	Challenges		
Develop list of personnel and services available to Steinhatchee	Hazard Mitigation Committee	Taylor County EMIM	SERT Taylor County Manager		-----	
Inventory generators and other critical supplies	HMC	Emergency Water Board	Community supported activity		-----	
Identify sites for command post and continuity of operations	HMC	TC/EMIM			-----	
Inventory hazardous materials used and stored in Steinhatchee	HMC	TC/EMIM			-----	

**STEINHATCHEE WATERFRONTS FLORIDA PRIORITY ISSUE AREA**  
**Hazard Mitigation**

**Goal 2: Develop local capacity to prevent, manage, and mitigate emergency situations**

		Timeline				
		2008	2009	2010	2011	2012
Objective 2.1 -- Ensure availability of local resources to prevent, manage, and mitigate emergencies in Steinhatchee						
<b>Strategy 2.1.2 – Visit with local government staff to discuss options to develop and/or improve access to county wide resources to supplement Steinhatchee capacity</b>						
Action	Lead Role	Potential Partners	Funding Options	Challenges		
Schedule visit	Hazard Mitigation Committee	County Emergency Manager	SERT Taylor County Community supported activity		----- x	
Identify county wide resources	Hazard Mitigation Committee	County Commissioners TBOCC	Community supported activity		----- x	
Identify process / protocols for access to resources	Hazard Mitigation Committee		Community supported activity		----- x	

# STEINHATCHEE WATERFRONTS FLORIDA PRIORITY ISSUE AREA

## Hazard Mitigation

Goal 2: Develop local capacity to prevent, manage, and mitigate emergency situations

		Timeline				
		2008	2009	2010	2011	2012
Objective 2.1 -- Ensure availability of local resources to prevent, manage, and mitigate emergencies in Steinhatchee						
<b>Strategy 2.1.3 – Work with state and local agency personnel to learn about how to prepare for, prevent, and/or mitigate emergency situations</b>						
Action	Lead Role	Potential Partners	Funding Options	Challenges		
Schedule visit	Hazard Mitigation Committee	Waterfronts Florida Taylor County EMM	Community supported activity			
Explore options for application of ideas and information at Steinhatchee	Hazard Mitigation Committee		Community supported activity		-----	
Inventory critical supplies including water and medical supplies	HMC	Big Bend Water Authority Water Board Health Department Clinic	Community supported activity		-----	



## STEINHATCHEE WATERFRONTS FLORIDA PRIORITY ISSUE AREA

### Hazard Mitigation

**Goal 2: Develop local capacity to prevent, manage, and mitigate emergency situations**

		Timeline				
		2008	2009	2010	2011	2012
Objective 2.2 -- Develop a resilient, self-reliant community						
<b>Strategy 2.2.1 – Develop awareness among citizens and visitors regarding types of hazards that might occur in Steinhatchee</b>						
Action	Lead Role	Potential Partners	Funding Options	Challenges		
Work with state and local agencies to identify kinds of emergencies / hazards common to coastal and other non-industrial communities	Hazard Mitigation Committee	Waterfronts Florida  Taylor County EMM	Community supported activity  Community supported activity		-----	
Develop brochures and educational materials for distribution to residents and visitors	Waterfronts Partnership  Taylor County Grants Coordinator	Taylor County EMM	Tourism Development Council		-----	
Distribute brochures and materials	Waterfronts Partnership	Chamber of Commerce			-----	

**STEINHATCHEE WATERFRONTS FLORIDA PRIORITY ISSUE AREA**  
**Hazard Mitigation**

**Goal 2: Develop local capacity to prevent, manage, and mitigate emergency situations**

		Timeline				
		2008	2009	2010	2011	2012
Objective: Develop a resilient, self-reliant community <b>Strategy 2.2.2 – Create a process to notify local residents and visitors of immediate and/or pending incident or hazard</b>						
Action	Lead Role	Potential Partners	Funding Options	Challenges		
Develop a list and contact information for organizations and businesses to be notified	Hazard Mitigation Committee	Taylor County EMM  Chamber of Commerce	Community supported activity		-----	
Survey organizations to determine how best to present information						
Establish a list of volunteers to create a call chain	Hazard Mitigation Committee	BBWA	Community supported activity		-----	

# STEINHATCHEE WATERFRONTS FLORIDA PRIORITY ISSUE AREA

## Hazard Mitigation

Goal 2: Develop local capacity to prevent, manage, and mitigate emergency situations

		Timeline				
		2008	2009	2010	2011	2012
Objective 2.2 -- Develop a resilient, self-reliant community						
<b>Strategy 2.2.3 – Work with local government officials to establish a communication center and/or communication protocols to be activated in an emergency</b>						
Action	Lead Role	Potential Partners	Funding Options	Challenges		
Conduct an assessment of current practices to determine need	Hazard Mitigation Committee	Taylor County EMM	Community supported activity		-----	
Visit with local government officials to discuss specific needs	Hazard Mitigation Committee	BBWA			-----	
Explore opportunities to include Steinhatchee in EMM plans Hazard Mitigation Committee	Hazard Mitigation Committee	Taylor County EMM	Community supported activity		-----	
		Regional Planning Council			-----	

# STEINHATCHEE WATERFRONTS FLORIDA PRIORITY ISSUE AREA

## Hazard Mitigation

Goal 2: Develop local capacity to prevent, manage, and mitigate emergency situations

		Timeline				
		2008	2009	2010	2011	2012
Objective 2.2 -- Develop a resilient, self-reliant community						
<b>Strategy 2.2.4</b> – Develop local knowledge of primary and contingent evacuation routes, evacuation shelter locations, and procedures for re-entering the community after an evacuation						
Action	Lead Role	Potential Partners	Funding Options	Challenges		
Identify evacuation route by type of hazard	Hazard Mitigation Committee	Taylor County EMIM BBWA	Community supported activity		-----	
Create maps of route-by-hazard system	Hazard Mitigation Committee	Taylor County Planning Department	Community supported activity		-----	
Publish and distribute maps to local residents, businesses, and visitors	Hazard Mitigation Committee	Steinhatchee Chamber of Commerce	Tourism Development Council		-----	
Identify options for private and public transportation in emergency situation	HMC	Big Bend Transit	Taylor County Grants Coordinator		-----	

**STEINHATCHEE WATERFRONTS FLORIDA PRIORITY ISSUE AREA**  
**Hazard Mitigation**

**Goal 2: Develop local capacity to prevent, manage, and mitigate emergency situations**

		Timeline							
		2008	2009	2010	2011	2012			
Objective 2.2 -- Develop a resilient, self-reliant community									
<b>Strategy 2.2.5 Promote a healthy and prepared community through seminars on health issues and public health services in emergency / disaster situation and on disaster preparedness</b>									
Action	Lead Role	Potential Partners	Funding Options	Challenges	2008	2009	2010	2011	2012
Work with public health officials to provide seminars on health issues and locally available health services	Hazard Mitigation Committee	Taylor County Health Department	Community supported activity			-----			
Work with emergency management services to provide seminars on how-to-prepare for emergencies / disasters	HMC	Taylor County EMM Chamber of Commerce Big Bend Transit	Community supported activity				-----		

# STEINHATCHEE WATERFRONTS FLORIDA

## Hazard Mitigation

Goal 2: Develop local capacity to prevent, manage, and mitigate emergency situations

		Timeline				
		2008	2009	2010	2011	2012
Objective 2.2 -- Develop a resilient, self-reliant community						
<b>Strategy 2.2.6 – Develop a hazard mitigation plan for Steinhatchee, to be incorporated in the Taylor County Local Government Comprehensive Plan</b>						
Action	Lead Role	Potential Partners	Funding Options	Challenges		
Develop a hazard mitigation plan for Steinhatchee	Hazard Mitigation Committee	Taylor County Emergency Management	Community supported activity		-----	
Work with local government officials to incorporate the Steinhatchee Hazard Mitigation Plan into the Comprehensive Plan	Waterfronts Florida Partnership	BBWA Taylor County Planning Department Regional Planning Council	SERT Waterfronts Florida Partnership Program		-----	

## STEINHATCHEE WATERFRONTS FLORIDA PRIORITY ISSUE AREA

### Environmental / Cultural Resources

**GOAL 3A:** Promote awareness and understanding of natural resource treasures in the Steinhatchee area

		Timeline				
		2008	2009	2010	2011	2012
Objective 3A.1 Protect and improve water quality for drinking, recreation, and coastal and inland fishery and environmental resources						
<b>Strategy 3A.1.1 Create map of environmental features and designations in the Steinhatchee area</b>						
Action	Lead Role	Potential Partners	Funding Options	Challenges		
Inventry federal, state, and local designations for Steinhatchee and surrounding areas	Environmental / Cultural Resources Committee	Taylor County Planning Department Steinhatchee Projects Board	Community supported activity		-----	
Create photo inventory of sites	ECRC	People of Steinhatchee Taylor County Planning	Community supported activity		-----	
Create map that locates and shows the features and designation	ECRC	Regional Planning Council Taylor County Historical Society			-----	

## STEINHATCHEE WATERFRONTS FLORIDA PRIORITY ISSUE AREA

### Environmental / Cultural Resources

**GOAL 3A:** Promote awareness and understanding of natural resource treasures in the Steinhatchee area

Objective 3A.1 Protect and improve water quality for drinking, recreation, and coastal and inland fishery and environmental resources

**Strategy 3A.1.2 Invite agency staff to discuss options for protection and use of the Steinhatchee River and inshore Gulf of Mexico**

#### Timeline

				2008	2009	2010	2011	2012
<b>Action</b>	<b>Lead Role</b>	<b>Potential Partners</b>	<b>Funding Options</b>	<b>Challenges</b>				
Develop list of federal, state, and local agencies responsible for protection and use of river and Gulf	Environmental / Cultural Resources Committee	Steinhatchee Chamber of Commerce FWC SRWMD	Community supported activity		-----			
Plan series of community gatherings to learn about programs	ECRC	Taylor County Coastal Committee SPB	Community supported activity		-----	-----		
Invite agency staff to talk about options for protection and use	ECRC	Taylor County Planning Regional Planning Council			-----	-----		



## STEINHATCHEE WATERFRONTS FLORIDA PRIORITY ISSUE AREA

### Environmental / Cultural Resources

**GOAL 3A:** Promote awareness and understanding of natural resource treasures in the Steinhatchee area

		Timeline				
		2008	2009	2010	2011	2012
Objective 3A.1 Protect and improve water quality for drinking, recreation, and coastal and inland fishery and environmental resources						
<b>Strategy 3A.1.3 Encourage adoption of the “Clean Marina Programs” to improve and protect quality of water in the Steinhatchee River and the Gulf of Mexico</b>						
Action	Lead Role	Potential Partners	Funding Options	Challenges		
Obtain information about the Clean Marina Programs – including Clean Marina, Boater, Boatyard, and Re-tailer	Environmental / Cultural Resources Committee	Steinhatchee Chamber of Commerce Taylor County Coastal Committee	Community supported activity		-----	
Schedule local workshop on Clean Marina Program	ECRC	Steinhatchee Projects Board SCC	Community supported activity		-----	

**STEINHATCHEE WATERFRONTS FLORIDA PRIORITY ISSUE AREA**  
**Environmental / Cultural Resources**

**GOAL 3A:** Promote awareness and understanding of natural resource treasures in the Steinhatchee area

Objective 3A.1 Protect and improve water quality for drinking, recreation, and coastal and inland fishery and environmental resources

**Strategy 3A.1.4 Explore options for adding policies regarding marine zoning, a mooring field, and protected areas for manatees, sea grass, shellfish, and rookeries to the Taylor County Comprehensive Plan**

**Timeline**

								2008	2009	2010	2011	2012
<b>Action</b>	<b>Lead Role</b>	<b>Potential Partners</b>	<b>Funding Options</b>	<b>Challenges</b>								
Meet with University of Florida researchers to consider options	Environmental / Cultural Resources Committee	Steinhatchee Chamber of Commerce TBOCC SRWMD	Community supported activity					-----				
Meet with Taylor County Planning Department to discuss comp plan amendment process	ECRC	SPB FWC SPB SCC	CSA					-----		-----		
Conduct local meetings to establish priority project and file for amendment	ECRC	NFRPC SCC SPB TBOCC	CSA							-----		

## STEINHATCHEE WATERFRONTS FLORIDA PRIORITY ISSUE AREA

### Environmental / Cultural Resources

**GOAL 3A:** Promote awareness and understanding of natural resource treasures in the Steinhatchee area

		Timeline				
		2008	2009	2010	2011	2012
Objective 3A.1 Protect and improve water quality for drinking, recreation, and coastal and inland fishery and environmental resources						
Strategy 3A.1.5 Establish a cleanup day to pick up trash along the river and Gulf coast waterfront						
Action	Lead Role	Potential Partners	Funding Options	Challenges		
Conduct meeting to develop interest in local cleanup days	Environmental / Cultural Resources Committee	Projects Board Chamber of Commerce AARP	Community supported activity		-----	
Schedule quarterly cleanups	ECRC	Taylor County Chamber of Commerce	CSA		-----	
Set up community participation in statewide annual coastal cleanup days	ECRC	Taylor County Solid Waste Chamber of Commerce	CSA		-----	

**STEINHATCHEE WATERFRONTS FLORIDA PRIORITY ISSUE AREA**  
**Environmental / Cultural Resources**

**GOAL 3A:** Promote awareness and understanding of natural resource treasures in the Steinhatchee area

		<b>Timeline</b>				
		2008	2009	2010	2011	2012
Objective 3A.1 Protect and improve water quality for drinking, recreation, and coastal and inland fishery and environmental resources						
<b>Strategy 3A.1.6 Educate the public and developers on new technologies for septic systems and the importance of regular maintenance of existing septic systems</b>						
<b>Action</b>	<b>Lead Role</b>	<b>Potential Partners</b>	<b>Funding Options</b>	<b>Challenges</b>		
Investigate options for septic systems – new technologies and routine maintenance	Environmental / Cultural Resources Committee	Taylor County Health Department BBWA Florida DOH	CSA		-----	
Set up workshop at Steinhatchee for local residents	ECRC	TBOCC BBWA	CSA		-----	
Partner with TCHD to encourage property owners and developers to adopt best practices	ECRC	Big Bend Water Authority TBOCC	CSA		-----	

## STEINHATCHEE WATERFRONTS FLORIDA PRIORITY ISSUE AREA

### Environmental / Cultural Resources

**GOAL 3A:** Promote awareness and understanding of natural resource treasures in the Steinhatchee area

Objective 3A.1 Protect and improve water quality for drinking, recreation, and coastal and inland fishery and environmental resources

**Strategy 3A.1.7 Develop partnership with Taylor County government to support code enforcement at Steinhatchee**

#### Timeline

				2008	2009	2010	2011	2012
<b>Action</b>	<b>Lead Role</b>	<b>Potential Partners</b>	<b>Funding Options</b>	<b>Challenges</b>				
Meet with Taylor County Code Enforcement group to learn about what Steinhatchee WFPP can do to support code enforcement within the community	Environmental / Cultural Resources Committee	Taylor County Health Code Enforcement Taylor County Planning Department Steinhatchee Projects Board TBOCC	CSA		-----			
Set up workshop at Steinhatchee for local residents	ECRC		CSA			-----		
Work with Taylor County officials to support cleanup activities	ECRC		CSA			-----		

**STEINHATCHEE WATERFRONTS FLORIDA PRIORITY ISSUE AREA**  
**Environmental / Cultural Resources**

**GOAL 3A:** Promote awareness and understanding of natural resource treasures in the Steinhatchee area

		Timeline				
		2008	2009	2010	2011	2012
Objective 3A.1 Protect and improve water quality for drinking, recreation, and coastal and inland fishery and environmental resources						
<b>Strategy 3A.1.8 Investigate need and options for updated water and sewer facilities at Steinhatchee</b>						
Action	Lead Role	Potential Partners	Funding Options	Challenges		
Meet with Big Bend Water Authority to discuss how to assess need and options	ECRC	TBOCC Dixie County BOCC	CSA		----	
Identify source of funding for needs assessment	ECRC Taylor County Grant Coordinator	TBOCC Dixie County BOCC	Outside Funding to be Identified		-----	
Work with Water Board to prepare request for proposal and solicit proposals	ECRC	TBOCC Dixie County BOCC			-----	
Monitor project	ECRC	TBOCC Dixie County BOCC			-----	

## STEINHATCHEE WATERFRONTS FLORIDA PRIORITY ISSUE AREA

### Environmental / Cultural Resources

**GOAL 3A:** Promote awareness and understanding of natural resource treasures in the Steinhatchee area

		Timeline				
		2008	2009	2010	2011	2012
Objective 3A.2 Develop awareness and use of research and local knowledge about natural resources at Steinhatchee and the Big Bend area						
<b>Strategy 3A.2.1 Use scientific research within or adjacent to the community, completed or underway for current and future projects to protect local resources</b>						
Action	Lead Role	Potential Partners	Funding Options	Challenges		
Contact environmental and wildlife agencies to identify research related to Steinhatchee natural resources	ECRC	USFWS FDEP FWC Taylor County Extension Office TCCC Taylor County Library System	CSA		-----	
Establish a committee to stay current with Steinhatchee-focused research	ECRC				-----	
Create a resource center at the Steinhatchee Waterfronts Florida Partnership office	ECRC		To be determined		-----	

## STEINHATCHEE WATERFRONTS FLORIDA PRIORITY ISSUE AREA

### Environmental / Cultural Resources

**GOAL 3A:** Promote awareness and understanding of natural resource treasures in the Steinhatchee area

		Timeline				
		2008	2009	2010	2011	2012
Objective 3A.2 Develop awareness and use of research and local knowledge about natural resources at Steinhatchee and the Big Bend area						
<b>Strategy 3A.2.2 Develop partnerships with scientists interested in coastal processes and coastal communities / economies</b>						
Action	Lead Role	Potential Partners	Funding Options	Challenges		
Identify individuals and organizations interested in conducting coastal research	ECRC	USFWS FDEP FWC	CSA			
	ECRC	Taylor County Extension Office TCCC	CSA			
Contact researchers to learn more about research agendas	ECRC	TBOCC SPB	CSA			
Invite individual researchers to visit Steinhatchee area	ECRC					



## STEINHATCHEE WATERFRONTS FLORIDA PRIORITY ISSUE AREA

### Environmental / Cultural Resources

**GOAL 3A:** Promote awareness and understanding of natural resource treasures in the Steinhatchee area

		Timeline				
		2008	2009	2010	2011	2012
Objective 3A.2 Develop awareness and use of research and local knowledge about natural resources at Steinhatchee and the Big Bend area						
<b>Strategy 3A.2.3 Partner with sister-Waterfronts Florida communities in the Big Bend to sponsor a symposium on coastal sciences</b>						
Action	Lead Role	Potential Partners	Funding Options	Challenges		
Contact Waterfronts Florida Partnership Program Managers at St. Marks and Panacea to develop science-based sister community relationship	ECRC	St. Marks Waterfronts Florida Partnership Panacea Waterfronts Florida Partnership FDEP SRWMD	CSA		-----	
Set up a symposium on coastal science research to be held at the Steinhatchee Community Center	ECRC		FDCA TDC		-----	

<b>STEINHATCHEE WATERFRONTS FLORIDA PRIORITY ISSUE AREA</b>									
<b>Environmental / Cultural Resources</b>									
<b>GOAL 3B: Identify, protect, preserve, and promote Steinhatchee's cultural resources</b>									
Objective 3B.1 -- Ensure awareness and respect for Steinhatchee's heritage									
<b>Strategy 3B.1.1 Conduct a cultural resource assessment to identify significant pre-historic and historic sites and resources at Steinhatchee</b>									
						<b>Timeline</b>			
<b>Action</b>	<b>Lead Role</b>	<b>Potential Partners</b>	<b>Funding Options</b>	<b>Challenges</b>	<b>2008</b>	<b>2009</b>	<b>2010</b>	<b>2011</b>	<b>2012</b>
Work with qualified archaeologists and historians to develop a cultural resource assessment of pre-historic and historic sites and resources	ECRC	Florida Office of Cultural and Historical Programs Taylor County Historical Society	OCHP			-----			
Create a map of resources and sites, as appropriate	ECRC					-----			
Develop a preliminary plan of action for protection and preservation of cultural resources, based on assessment	ECRC	Steinhatchee Projects Board TBOCC Dixie County Historical Society				-----			

## STEINHATCHEE WATERFRONTS FLORIDA PRIORITY ISSUE AREA

### Environmental / Cultural Resources

**GOAL 3B:** Identify, protect, preserve, and promote Steinhatchee's cultural resources

Objective 3B.1 -- Ensure awareness and respect for Steinhatchee's heritage

**Strategy 3B.1.2** Identify location and conduct site assessment of Fort Frank Brooke

Timeline

		2008	2009	2010	2011	2012
<b>Action</b>	<b>Lead Role</b>					
Work with qualified archaeologists and historians to develop a scope of work to identify the exact location, historical background, and site assessment of Fort Frank Brooks	ECRC		-----			
Monitor progress of cultural resource project	ECRC		-----	-----		
Schedule period public meetings to keep public informed of progress and results	ECRC		-----	-----		
	<b>Potential Partners</b>					
	Florida Office of Cultural and Historical Programs					
	Taylor County Historical Society					
	Steinhatchee Projects Board TBOCC					
	<b>Funding Options</b>					
	OCHP					
	CSA					
	CSA					
	<b>Challenges</b>					

**STEINHATCHEE WATERFRONTS FLORIDA PRIORITY ISSUE AREA**  
**Environmental / Cultural Resources**

**GOAL 3B:** Identify, protect, preserve, and promote Steinhatchee's cultural resources

Objective 3B.1 -- Ensure awareness and respect for Steinhatchee's heritage

**Strategy 3B.1.3 Partner with local organizations to develop a program to collect oral histories of individuals involved in fishing, timbering, and other local industries**

**Timeline**

					2008	2009	2010	2011	2012
<b>Action</b>	<b>Lead Role</b>	<b>Potential Partners</b>	<b>Funding Options</b>	<b>Challenges</b>					
Identify interest in collection of oral histories of individuals involved in fishing, timbering, and other local industries	ECRC	Taylor County Schools	CSA			-----	-----		
Partner with local school and other organizations to discuss potential partnership to create program on oral history in school system		Taylor County Schools Historical Society AARP Steinhatchee Projects Board TBOCC Dixie County Historical Society	TBD			-----	-----		

**STEINHATCHEE WATERFRONTS FLORIDA PRIORITY ISSUE AREA**  
**Environmental / Cultural Resources**

**GOAL 3B:** Identify, protect, preserve, and promote Steinhatchee’s cultural resources

<p>Objective 3B.1 -- Ensure awareness and respect for Steinhatchee’s heritage</p> <p><b>Strategy 3B.1.4 Partner with Taylor County Board of County Commissioners and others to develop a maritime museum and educational kiosks at the Steinhatchee Fish Market, pending purchase of property through the Florida Communities Trust (FCT)</b></p>	<b>Timeline</b>				

**STEINHATCHEE WATERFRONTS FLORIDA PRIORITY ISSUE AREA**  
**Environmental / Cultural Resources**

**GOAL 3B:** Identify, protect, preserve, and promote Steinhatchee's cultural resources

		Timeline				
		2008	2009	2010	2011	2012
Objective 3B.2 – Enhance the quality-of-life in Steinhatchee						
<b>Strategy 3B.2.1 Explore planning options to protect the local viewshed and architectural traditions</b>						
<b>Action</b>	<b>Lead Role</b>	<b>Potential Partners</b>	<b>Funding Options</b>	<b>Challenges</b>		
Meet with University of Florida researchers to learn about strategies for development restrictions on building heights and creation of special overlay district for Steinhatchee	ECRC	Chamber of Commerce SPB TBOCC	CSA		-----	
Meet with Taylor County Planning Department to discuss potential for Master Plan for Steinhatchee	Environmental / Cultural Resources Committee	Chamber of Commerce SPB TBOCC	CSA		-----	
Conduct local meetings to establish interest and next steps	ECRC  ECRC	Chamber of Commerce SPB TBOCC	CSA		-----	

## STEINHATCHEE WATERFRONTS FLORIDA PRIORITY ISSUE AREA

### Environmental / Cultural Resources

**GOAL 3B:** Identify, protect, preserve, and promote Steinhatchee’s cultural resources

		Timeline				
		2008	2009	2010	2011	2012
Objective 3B.2 – Enhance the quality-of-life in Steinhatchee						
<b>Strategy 3B.2.2 Assess the need for in-school and after-school programs for Steinhatchee youths</b>						
Action	Lead Role	Potential Partners	Funding Options	Challenges		
Conduct a survey at local school to determine what school-age children want to see and/or need in the community	ECRC	Taylor County Schools Boys & Girls Club SPB	CSA		-----	
	Environmental / Cultural Resources Committee	Schools Volunteers Boys & Girls Club SPB	CSA		-----	
Foster drug awareness and prevention in community by developing workshops for parents and teens	ECRC	Taylor County SO Florida D.A.R.E Program Boys & Girls Club SPB	CSA		-----	

**STEINHATCHEE WATERFRONTS FLORIDA PRIORITY ISSUE AREA**  
**Environmental / Cultural Resources**

**GOAL 3B:** Identify, protect, preserve, and promote Steinhatchee’s cultural resources

**Objective 3B.2 – Enhance the quality-of-life in Steinhatchee**

**Strategy 3B.2.3 Create a pollution prevention program for Steinhatchee**

**Timeline**

				2008	2009	2010	2011	2012
<b>Action</b>	<b>Lead Role</b>	<b>Potential Partners</b>	<b>Funding Options</b>	<b>Challenges</b>				
Meet with Taylor County Solid Waste Department to learn about recycling options	ECRC	Solid Waste Department	CSA		----	-----		
Schedule presentation by FDEP Pollution Prevention representatives	Environmental / Cultural Resources Committee  ECRC	P2 Program	CSA			-----		



## STEINHATCHEE WATERFRONTS FLORIDA PRIORITY ISSUE AREA

### Public Access

**GOAL 4A:** Acquire additional or re-purpose county owned waterfront property for public use

		Timeline				
		2008	2009	2010	2011	2012
Objective 4A.1 -- Ensure public access to the Steinhatchee River and the Gulf of Mexico for fishing, scalloping, pleasure-boating, enjoyment of nature, and recreation						
<b>Strategy 4A.1.1 Partner with Taylor County government; federal, state, regional agencies to identify and purchase waterfront property at Steinhatchee</b>						
Action	Lead Role	Potential Partners	Funding Options	Challenges		
Develop criteria to select properties of interest, e.g. waterfront, availability	Public Access Committee	SCC			-----	
	TBOCC	TBOCC SPB			-----	
Identify and map properties	PAC	SCC			-----	
		TBOCC SPB			-----	
Prioritize properties of interest	PAC	SCC			-----	
		TBOCC SPB			-----	
Identify land purchase programs at state / federal levels	Taylor County Grants Coordinator	PAC			-----	
					-----	
Submit and track application	TCGC				-----	

# STEINHATCHEE WATERFRONTS FLORIDA PRIORITY ISSUE AREA

## Public Access

**GOAL 4A:** Acquire additional or re-purpose county owned waterfront property for public use

		Timeline				
		2008	2009	2010	2011	2012
Objective 4A.1 --	Ensure public access to the Steinhatchee River and the Gulf of Mexico for fishing, scalloping, pleasure-boating, enjoyment of nature, and recreation					
<b>Strategy 4A.1.2</b>	<b>Partner with Taylor County government and adjacent property owners to explore options and agreements to re-purpose county owned street ends and other sites as mini-parks and/or launch areas for canoes and kayaks</b>					
Action	Lead Role	Potential Partners	Funding Options	Challenges		
Develop criteria to select properties of interest, e.g. waterfront, willing neighbors	Public Access Committee	Taylor County Government Steinhatchee Chamber of Commerce	CSA		-----	
Identify and map properties	PAC	SPB	CSA		-----	
Prioritize properties of interest	PAC				-----	
Negotiate agreements with neighbors	Taylor County BoCC				-----	

## STEINHATCHEE WATERFRONTS FLORIDA PRIORITY ISSUE AREA

### Public Access

**GOAL 4B:** Develop a network of public access points, facilities, and services to support water-based and upland activities

		Timeline				
		2008	2009	2010	2011	2012
Objective 4B.1 --	Ensure access to public property, waterfront vistas, and upland native habitat and resources					
<b>Strategy 4B.1.1 Renovate existing facilities on purchase or construct new buildings and boat slips at undeveloped property, as land is brought into public ownership</b>						
Action	Lead Role	Potential Partners	Funding Options	Challenges		
Conduct a needs assessment at each property – coordinate with other elements of Vision / Projects	Public Access Committee	Taylor County Government Engineering	CSA		-----	
Prioritize needs	PAC	Steinhatchee Projects Board	CSA		-----	
Identify funding options	PAC	TC Grants Coordinator	TBD		-----	
Set up projects	Taylor County BoCC				-----	
	Taylor County BoCC				-----	

# STEINHATCHEE WATERFRONTS FLORIDA PRIORITY ISSUE AREA

## Public Access

GOAL 4B: Develop a network of public access points, facilities, and services to support water-based and upland activities

Objective 4B.1 -- Ensure access to public property, waterfront vistas, and upland native habitat and resources

### Strategy 4B.1.2 Establish boat ramps to accommodate small boats

	Action	Lead Role	Potential Partners	Funding Options	Challenges	Timeline					
						2008	2009	2010	2011	2012	
Partner with Taylor County officials and local organizations to prioritize sites		Public Access Committee	Taylor County Government Engineering	CSA		-----					
Identify funding options		PAC	TC Grants Coordinator			-----					
Work with TC Grants Coordinator to support application for funds		PAC Taylor County BoCC	Projects Board	FWC-FBIP		-----			-----		--
Support Grants Coordinator for construction and administration of grant, as appropriate		PAC TBOCC	TC Grants Coordinator	TBD		-----			-----		

## STEINHATCHEE WATERFRONTS FLORIDA PRIORITY ISSUE AREA

### Public Access

**GOAL 4B:** Develop a network of public access points, facilities, and services to support water-based and upland activities

	Objective 4B.1 -- Ensure access to public property, waterfront vistas, and upland native habitat and resources	Strategy 4B.1.3 Create waterfront boardwalks, walkways, and gazebo(s) to allow the public to get close to the river and bay	Timeline				
			2008	2009	2010	2011	2012
<b>Action</b>	<b>Lead Role</b>	<b>Potential Partners</b>	<b>Funding Options</b>	<b>Challenges</b>			
Partner with Taylor County officials and local organizations to prioritize sites	Public Access Committee	Taylor County Government Steinhatchee Chamber of Commerce Projects Board TCGC	CSA				
Identify funding options	PAC		OGT				
Work with TC Grants Coordinator to support application for funds	PAC Taylor County						
Support Grants Coordinator for construction and administration of grant, as appropriate	PAC	SCC Projects Board					

# STEINHATCHEE WATERFRONTS FLORIDA PRIORITY ISSUE AREA

## Public Access

**GOAL 4B:** Develop a network of public access points, facilities, and services to support water-based and upland activities

		Timeline				
		2008	2009	2010	2011	2012
Objective 4B.1 -- habitat and resources	Ensure access to public property, waterfront vistas, and upland native					
<b>Strategy 4B.1.4</b>	<b>Make improvements to old bridge abutment for use as a public fishing pier</b>					
<b>Action</b>	<b>Lead Role</b>	<b>Potential Partners</b>	<b>Funding Options</b>	<b>Challenges</b>		
Identify funding options	Public Access Committee	TCGC	CPI FBIP FDEP FRDAP		-----	
Work with TC Grants Coordinator to support application for funds	PAC	Projects Board Steinhatchee Chamber of Commerce	CPI FRDAP FDEP		-----	
Work with TC Grants Coordinator to provide local match for grants, as required	Projects Board Taylor County BOCC	SCC			-----	

# STEINHATCHEE WATERFRONTS FLORIDA PRIORITY ISSUE AREA

## Public Access

**GOAL 4B:** Develop a network of public access points, facilities, and services to support water-based and upland activities

**Objective 4B.1 --** Ensure access to public property, waterfront vistas, and upland native habitat and resources

**Strategy 4B.1.5** Develop trails, greenways, parks and open spaces in the Steinhatchee Community

### Timeline

Action	Lead Role	Potential Partners	Funding Options	Challenges	2008	2009	2010	2011	2012
Identify funding options	Public Access Committee TBOCC	TCGC	OGT FRDAP FCT						
Work with TC Grants Coordinator to support application for funds	PAC	Steinhatchee Projects Board Steinhatchee Chamber of Commerce							
Work with TC Grants Coordinator to provide local match for grants, as required	Projects Board Taylor County	Projects Board SCC							

# STEINHATCHEE WATERFRONTS FLORIDA PRIORITY ISSUE AREA

## Public Access

**GOAL 4B:** Develop a network of public access points, facilities, and services to support water-based and upland activities

**Objective 4B.1 --** Ensure access to public property, waterfront vistas, and upland native habitat and resources

**Strategy 4B.1.6** Establish a “chain-of-parks” by connecting a series of greenways, trails, footpaths, and open space to link the existing parks, street-ends, and new properties as these become available

### Timeline

Action	Lead Role	Potential Partners	Funding Options	Challenges	Timeline				
					2008	2009	2010	2011	2012
Identify funding options	Public Access Committee	TCGC	OGT FRDAP FCT		-----	-----	-----	-----	-----
Work with TC Grants Coordinator to support application for funds	PAC	Projects Board Steinhatchee Chamber of Commerce			-----	-----	-----	-----	-----
Work with TC Grants Coordinator to provide local match for grants, as required	Projects Board Taylor County	Projects Board SCC			-----	-----	-----	-----	-----



## STEINHATCHEE WATERFRONTS FLORIDA PRIORITY ISSUE AREA

### Public Access

**GOAL 4B:** Develop a network of public access points, facilities, and services to support water-based and upland activities

Objective 4B.1 -- Ensure access to public property, waterfront vistas, and upland native habitat and resources	Timeline	2008	2009	2010	2011	2012
<b>Strategy 4B.1.7</b> Establish a trail between Keaton Beach (at the north) and Tennille (at the east) to promote foot traffic through Steinhatchee from other coastal communities and to Steinhatchee Falls						
<b>Action</b>		<b>Challenges</b>	<b>Funding Options</b>	<b>Potential Partners</b>	<b>Lead Role</b>	
Identify funding options			OGT FRDAP FDOT	TCGC	Public Access Committee	-----
Work with TC Grants Coordinator to support application for funds				Projects Board Steinhatchee Chamber of Commerce	PAC	-----
Work with TC Grants Coordinator to provide local match for grants, as required				Projects Board SCC	Projects Board Taylor County	-----

# STEINHATCHEE WATERFRONTS FLORIDA PRIORITY ISSUE AREA

## Public Access

**GOAL 4B:** Develop a network of public access points, facilities, and services to support water-based and upland activities

**Objective 4B.1 --** Ensure access to public property, waterfront vistas, and upland native habitat and resources

**Strategy 4B.1.8** Create a waterfront trailhead for canoe and kayak access

### Timeline

						2008	2009	2010	2011	2012
<b>Action</b>	<b>Lead Role</b>	<b>Potential Partners</b>	<b>Funding Options</b>	<b>Challenges</b>						
Identify funding options	Public Access Committee	TCGC	OGT FRDAP CPI			---	-----	-----	-----	-----
Work with TC Grants Coordinator to support application for funds	PAC	Projects Board Steinhatchee Chamber of Commerce				---	-----	-----	-----	-----
Work with TC Grants Coordinator to provide local match for grants, as required	Projects Board Taylor County BoCC	Projects Board SCC				---	-----	-----	-----	-----

## STEINHATCHEE WATERFRONTS FLORIDA PRIORITY ISSUE AREA

### Public Access

**GOAL 4B:** Develop a network of public access points, facilities, and services to support water-based and upland activities

		Timeline				
		2008	2009	2010	2011	2012
Objective 4B.1 -- Ensure access to public property, waterfront vistas, and upland native habitat and resources						
<b>Strategy 4B.1.9 Partner with Taylor County government and local organizations to provide outdoor public restrooms</b>						
Action	Lead Role	Potential Partners	Funding Options	Challenges		
Identify funding options	Public Access Committee	TCGC	OGT FRDAP FBIP			
Work with TC Grants Coordinator to support application for funds	PAC	Projects Board Steinhatchee Chamber of Commerce				
Work with TC Grants Coordinator to provide local match for grants, as required	Projects Board Taylor County	Projects Board SCC				

# STEINHATCHEE WATERFRONTS FLORIDA PRIORITY ISSUE AREA

## Public Access

**GOAL 4B:** Develop a network of public access points, facilities, and services to support water-based and upland activities

**Objective 4B.1 --** Ensure access to public property, waterfront vistas, and upland native habitat and resources

**Strategy 4B.1.10** Develop off-water parking and shuttle service to handle traffic associated with weekend visitors, winter tourists, fishing tournaments, scallop season, and special events

### Timeline

Action	Lead Role	Potential Partners	Funding Options	Challenges	2008	2009	2010	2011	2012
Conduct a survey to determine types of needs associated with events	Public Access Committee	TCGC Commuter Services	TBOCC			-----			
Identify funding options	TCGC	TDC Projects Board					-----		
Work with TC Grants Coordinator to support application for funds	Projects Board	Steinhatchee Chamber of Commerce Projects Board					-----	-----	
Work with TC Grants Coordinator to provide local match for grants, as required		SCC					-----	-----	

# STEINHATCHEE WATERFRONTS FLORIDA PRIORITY ISSUE AREA

## Public Access

GOAL 4B: Develop a network of public access points, facilities, and services to support water-based and upland activities

Objective 4B.2 Develop awareness of opportunities for public access to waterways and upland natural resources

Strategy 4B.2.1 Partner with local organizations to develop a series of markers and kiosks that identify the importance and characteristics of specific resources

### Timeline

					2008	2009	2010	2011	2012
Action	Lead Role	Potential Partners	Funding Options	Challenges					
Conduct a survey to determine types of needs and constraints associated with creating place markers	PAC	Projects Board Taylor County Coastal Committee TC Historical Society				-----	-----		
Identify funding options	TCGC	Projects Board TCCC TCHS				-----	-----		
Work with TC Grants Coordinator to support application for funds	PAC					-----	-----		
Work with TC Grants Coordinator to provide local support, as required	PAC					-----	-----		

## STEINHATCHEE WATERFRONTS FLORIDA PRIORITY ISSUE AREA

### Public Access

**GOAL 4B:** Develop a network of public access points, facilities, and services to support water-based and upland activities

Objective 4B.2 Develop awareness of opportunities for public access to waterways and upland natural resources  
**Strategy 4B.2.2 Establish annual waterfront-upland walkabout to encourage local residents and tourists to visit natural areas**

#### Timeline

				2008	2009	2010	2011	2012
<b>Action</b>	<b>Lead Role</b>	<b>Potential Partners</b>	<b>Funding Options</b>	<b>Challenges</b>				
Partner with environmental and greenway agencies to develop goals, strategies, format, and publicity	PAC	Projects Board TCCC OGT FWC SCC				-----		
Identify funding options	TCGC	OGT FWC				-----		
Work with TC Grants Coordinator to support application for funds	PAC	Projects Board				-----		
Establish 1 <sup>st</sup> Annual Steinhatchee Walkabout	PAC	SCC				-----		

## STEINHATCHEE WATERFRONTS FLORIDA PRIORITY ISSUE AREA

### Public Access

**GOAL 4B:** Develop a network of public access points, facilities, and services to support water-based and upland activities

Objective 4B.2 Develop awareness of opportunities for public access to waterways and upland natural resources

**Strategy 4B.2.3 Partner with stated, regional, and local government and local organizations to create a guide to water-based activities and upland resources**

#### Timeline

		2008	2009	2010	2011	2012
Action	Lead Role	Potential Partners	Funding Options	Challenges		
Partner with environmental and greenway agencies to develop goals, strategies, format	PAC	Projects Board	OGT			
	Taylor County BoCC	TCCC	FWC			
		OGT				
Identify funding options		SRWMD				
		FWC				
	TCGC	SCC				
Work with TC Grants Coordinator to support application for funds		OGT				
	PAC	FWC				
		SRWMD				
Support TCGC to accomplish work		Projects Board				
		Projects Board				
	PAC	SCC				

## STEINHATCHEE WATERFRONTS FLORIDA PRIORITY ISSUE AREA

### Economic Revitalization

**GOAL 5A: Develop economic opportunities and capacity at Steinhatchee**

		Timeline				
		2008	2009	2010	2011	2012
<p><b>Objective 5A.1:</b> Create partnership with local government and state agencies to assess economy and identify new opportunities at Steinhatchee</p> <p><b>Strategy 5A1.1 –</b> Develop strong relationships with the Taylor County Board of County Commissioners and the Taylor County Economic Development Council</p>						
Action	Lead Role	Potential Partners	Funding Options	Challenges		
<p>Invite and encourage staff of county administration and Economic Development Council to attend meetings of Steinhatchee Waterfronts Florida Partnership and Economic Revitalization Committee</p> <p>Economic Revitalization Committee to attend county and council meetings on a regular basis</p>	<p>Economic Revitalization Committee</p> <p>ERC</p>	<p>Steinhatchee Chamber of Commerce</p> <p>SPB</p>			----	-----



# STEINHATCHEE WATERFRONTS FLORIDA PRIORITY ISSUE AREA

## Economic Revitalization

GOAL 5A: Develop economic opportunities and capacity at Steinhatchee

Objective 5A.2 Strengthen existing businesses and establishments						Timeline				
Strategy 5A2.1 – Inventory and map local businesses						2008	2009	2010	2011	2012
Action	Lead Role	Potential Partners	Funding Options	Challenges						
<p>Conduct a survey to identify local businesses by location, services or products, target market, seasonal changes, and needs</p> <p>Identify opportunities for small business loans and/or grants, as appropriate</p>	<p>Economic Revitalization Committee</p> <p>Taylor County BoCC</p> <p>ERC</p>	<p>Steinhatchee Chamber of Commerce</p> <p>SPB</p> <p>SCC</p> <p>SPB</p> <p>Taylor County Development Authority</p> <p>Taylor County Tourism Development</p>	<p>CSA</p>			-----	-----	-----		

# STEINHATCHEE WATERFRONTS FLORIDA PRIORITY ISSUE AREA

## Economic Revitalization

GOAL 5A: Develop economic opportunities and capacity at Steinhatchee

Objective 5A.2 Strengthen existing businesses and establishments						Timeline				
Strategy 5A2.1 – Inventory and map local businesses						2008	2009	2010	2011	2012
Action	Lead Role	Potential Partners	Funding Options	Challenges						
Conduct a survey to identify local businesses by location, services or products, target market, seasonal changes, and needs	Economic Revitalization Committee	Steinhatchee Chamber of Commerce Taylor County Development Authority Taylor County Tourism Development	CSA				-----			
Identify opportunities for small business loans and/or grants, as appropriate	ERC						-----			

## STEINHATCHEE WATERFRONTS FLORIDA PRIORITY ISSUE AREA

### Economic Revitalization

**GOAL 5A:** Develop economic opportunities and capacity at Steinhatchee

Objective 5A.2 Strengthen existing businesses and establishments <b>Strategy 5A2.2 – Partner with district commuter services to establish van pool and car pools for individuals who travel to and from Steinhatchee for work</b>		Timeline				
		2008	2009	2010	2011	2012
Action	Lead Role	Potential Partners	Funding Options	Challenges		
Meet with representatives of district commuter services to establish van pool and car pools	Economic Revitalization Committee Taylor County BoCC	Steinhatchee Chamber of Commerce	CSA		-----	
Identify transportation needs of local businesses / establishments	Taylor County BoCC	Commuter Services Big Bend Transit			-----	

**STEINHATCHEE WATERFRONTS FLORIDA PRIORITY ISSUE AREA**  
**Economic Revitalization**

**GOAL 5A:** Develop economic opportunities and capacity at Steinhatchee

		Timeline				
		2008	2009	2010	2011	2012
Objective 5A.3 --Create new jobs and foster development of local talent						
<b>Strategy 5A.3.1 -- Partner with FAMU, UF, and Florida Procurement Technical Assistance Center, to offer business and entrepreneurial workshops at Steinhatchee</b>						
Action	Lead Role	Potential Partners	Funding Options	Challenges		
Identify types of training workshops available through public agencies and organizations	Economic Revitalization Committee Taylor County BoCC	Steinhatchee Chamber of Commerce	CSA		-----	
Identify local interest for workshops					-----	
Schedule and publicize workshops at Steinhatchee					-----	

# STEINHATCHEE WATERFRONTS FLORIDA PRIORITY ISSUE AREA

## Economic Revitalization

GOAL 5A: Develop economic opportunities and capacity at Steinhatchee

		Timeline				
		2008	2009	2010	2011	2012
Objective 5A.3 --Create new jobs and foster development of local talent						
<b>Strategy 5A3.2 – Survey residents regarding business and job interests</b>						
Action	Lead Role	Potential Partners	Funding Options	Challenges		
Conduct survey of local residents – separate from survey of business establishments	Economic Revitalization Committee	Steinhatchee Chamber of Commerce SPB Taylor County Development Authority	CSA			
Tabulate and analyze survey results						
Determine next steps or how to use the survey results						

**STEINHATCHEE WATERFRONTS FLORIDA PRIORITY ISSUE AREA**  
**Economic Revitalization**

**GOAL 5A: Develop economic opportunities and capacity at Steinhatchee**

		<b>Timeline</b>				
		2008	2009	2010	2011	2012
Objective 5A.3 --Create new jobs and foster development of local talent						
<b>Strategy 5A3.3 – Develop local business team to mentor existing and new business owners</b>						
<b>Action</b>	<b>Lead Role</b>	<b>Potential Partners</b>	<b>Funding Options</b>	<b>Challenges</b>		
Meet with local business owners / operators to identify interest and pool of potential mentors	Economic Revitalization Committee	Steinhatchee Chamber of Commerce Taylor County Development Authority FAMU UF	CSA		----	-----
Identify options for training as mentors					-----	-----
Set up mentoring program at Steinhatchee					-----	-----
Advertise availability of mentors					-----	-----

## STEINHATCHEE WATERFRONTS FLORIDA PRIORITY ISSUE AREA

### Economic Revitalization

**GOAL 5A:** Develop economic opportunities and capacity at Steinhatchee

		Timeline				
		2008	2009	2010	2011	2012
Objective 5A.3 --Create new jobs and foster development of local talent						
<b>Strategy 5A3.4 – Investigate potential to establish Junior Achievement (JA) program at Steinhatchee for school age young people</b>						
Action	Lead Role	Potential Partners	Funding Options	Challenges		
Meet with representatives of the Junior Achievement programs in Central Florida to learn more about JA	Economic Revitalization Committee	Steinhatchee Chamber of Commerce	CSA		-----	-----
Survey school students in Steinhatchee area		Taylor County School system			-----	-----
Set up pilot program, as appropriate					-----	-----

## STEINHATCHEE WATERFRONTS FLORIDA PRIORITY ISSUE AREA

### Economic Revitalization

#### GOAL 5B: Establish a town center at Steinhatchee

		Timeline				
		2008	2009	2010	2011	2012
Objective 5B.1 -- Create a focal point for waterfront activities and central business district						
Strategy 5B1.1 -- Partner with the Taylor County Board of County Commissioners to purchase the Steinhatchee Fish Market						
Action	Lead Role	Potential Partners	Funding Options	Challenges		
Work with Taylor County Grants Coordinator to acquire Steinhatchee Fish Market	Economic Revitalization Committee	Projects Board Steinhatchee Chamber of Commerce	FCT		-----	
Work with Public Access Committee to identify and prioritize sub-projects	Public Access Committee				-----	



## STEINHATCHEE WATERFRONTS FLORIDA PRIORITY ISSUE AREA

### Economic Revitalization

#### GOAL 5B: Establish a town center at Steinhatchee

		Timeline				
		2008	2009	2010	2011	2012
Objective 5B.1 -- Create a focal point for waterfront activities and central business district						
Strategy 5B1.2 -- Partner with the Taylor County Board of County Commissioners to purchase the Ideal Marina property						
Action	Lead Role	Potential Partners	Funding Options	Challenges		
Work with Taylor County Grants Coordinator to acquire Ideal Marina property	Economic Revitalization Committee Taylor County BoCC	Projects Board	CSA		-----	
Work with Public Access Committee to identify and prioritize sub-projects	Public Access Committee	Steinhatchee Chamber of Commerce			-----	

## STEINHATCHEE WATERFRONTS FLORIDA PRIORITY ISSUE AREA

### Economic Revitalization

#### GOAL 5B: Establish a town center at Steinhatchee

		Timeline				
		2008	2009	2010	2011	2012
Objective 5B2 -- Provide maximum public access to Steinhatchee waterfront for community and for visitors / tourists, boating and non-boating.						
Strategy 5B2.1 : Work with the FDOT to re-route SR 51 to foster the development of pedestrian traffic in the town center at SR 51 and County Road 361						
Action	Lead Role	Potential Partners	Funding Options	Challenges		
Work with FDOT district personnel to identify options for re-routing SR 51	Taylor County Engineering Department	ERC	CSA		-----	
Conduct a public meeting to obtain input and ideas regarding potential routes	ERC	Steinhatchee Chamber of Commerce			-----	
Work with FDOT to establish options for funding and schedule for work					-----	

## STEINHATCHEE WATERFRONTS FLORIDA PRIORITY ISSUE AREA

### Economic Revitalization

#### GOAL 5B: Establish a town center at Steinhatchee

		Timeline				
		2008	2009	2010	2011	2012
Objective 5B2 -- Provide maximum public access to Steinhatchee waterfront for community and for visitors / tourists, boating and non-boating.						
Strategy 5B2.2 Establish waterfront and over-water walkway to be managed by Taylor County						
Action	Lead Role	Potential Partners	Funding Options	Challenges		
Work with Taylor County government to identify options for development of walkways	Economic Revitalization Committee	Taylor County Board of County Commissioners	CSA OGT FDOT FRDAP CPI		-----	
Conduct a public meeting to obtain input and ideas regarding potential routes	ERC	Steinhatchee Chamber of Commerce			---	-----
Work with Taylor County government to maintain structures	ERC	Project Board			-----	-----

# STEINHATCHEE WATERFRONTS FLORIDA PRIORITY ISSUE AREA

## Economic Revitalization

### GOAL 5C: Explore options to fund projects at Steinhatchee

		Timeline				
		2008	2009	2010	2011	2012
Objective 5C.1 -- Secure dedicated tax-related revenue stream for Steinhatchee						
Strategy 5C.1.1 Develop strong relationship with Taylor County Tourism Development Council to recapture portion of bed-tax collected at Steinhatchee motels/resorts						
Action	Lead Role	Potential Partners	Funding Options	Challenges		
Meet with owners/operators of establishments that collect and submit bed tax to the Taylor County Tourism Development Committee	Economic Revitalization Committee Taylor County BoCC	Steinhatchee Chamber of Commerce	CSA			
Invite TDC staff to attend meetings of the Steinhatchee Waterfronts Florida Partnership	ERC	Projects Board				
Attend TDC meetings on a regular basis	ERC					

## STEINHATCHEE WATERFRONTS FLORIDA PRIORITY ISSUE AREA

### Economic Revitalization

#### GOAL 5C: Explore options to fund projects at Steinhatchee

		Timeline				
		2008	2009	2010	2011	2012
Objective 5C.1 -- Secure dedicated tax-related revenue stream for Steinhatchee						
Strategy 5C.1.2 Investigate tax increment funding and creation of a Community Redevelopment Agency (CRA) at Steinhatchee						
Action	Lead Role	Potential Partners	Funding Options	Challenges		
Work with Taylor County administration to explore CRA concept	Economic Revitalization Committee	Steinhatchee Chamber of Commerce SPB	CSA		-----	-----
Schedule presentation at Steinhatchee by representatives of the Florida Community Redevelopment Association	ERC					-----
Conduct public meeting regarding potential for CRA at Steinhatchee	ERC	Steinhatchee Chamber of Commerce SPB				-----
Establish action plan for creation of CRA, as appropriate	ERC					-----

# STEINHATCHEE WATERFRONTS FLORIDA PRIORITY ISSUE AREA

## Economic Revitalization

### GOAL 5C: Explore options to fund projects at Steinhatchee

						<b>Timeline</b>				
						2008	2009	2010	2011	2012
Objective 5C. 2 -- Capture other types of funding for local initiatives and projects										
Strategy 5C 2.1 -- Investigate benefits and challenges of economic assistance available to Steinhatchee with special designations such as Brownfield, Enterprise Zone, and Rural Area of Critical Economic Concern										
<b>Action</b>	<b>Lead Role</b>	<b>Potential Partners</b>	<b>Funding Options</b>	<b>Challenges</b>						
Partner with Taylor County government to learn more about each designation	Economic Revitalization Committee	Steinhatchee Chamber of Commerce	CSA							
Schedule public presentations at Steinhatchee on each topic to learn about the pros and cons and funding options	ERC									
Identify and prioritize projects appropriate to each funding stream	ERC	Steinhatchee Chamber of Commerce								
Work with governmental unit or businesses eligible for assistance	ERC									

**STEINHATCHEE WATERFRONTS FLORIDA PRIORITY ISSUE AREA**

**Economic Revitalization**

**GOAL 5C: Explore options to fund projects at Steinhatchee**

		<b>Timeline</b>				
		<b>2008</b>	<b>2009</b>	<b>2010</b>	<b>2011</b>	<b>2012</b>
Objective 5C. 2 -- Capture other types of funding for local initiatives and projects						
Strategy 5C2.2 -- Develop partnership with Project Board and Steinhatchee Chamber of Commerce to investigate opportunities for planned giving to non-profit organization for the benefit of Steinhatchee community projects						
<b>Action</b>	<b>Lead Role</b>	<b>Potential Partners</b>	<b>Funding Options</b>	<b>Challenges</b>		
Partner with Steinhatchee Chamber of Commerce and Projects Board to explore planned giving options to establish funding program for Steinhatchee projects	Economic Revitalization Committee	Projects Board  Steinhatchee Chamber of Commerce	CSA		-----	
Identify sources of information about planned giving as an option	ERC				-----	

**STEINHATCHEE WATERFRONTS FLORIDA PRIORITY ISSUE AREA**

**Economic Revitalization**

**GOAL 5D: Promote tourism and natural resource-related opportunities at Steinhatchee**

		<b>Timeline</b>				
		<b>2008</b>	<b>2009</b>	<b>2010</b>	<b>2011</b>	<b>2012</b>
Objective 5D.1 --	Maximize local benefits from tourism and natural resource-based activities					
Strategy 5D1.1 --	Develop strong relationship with promoters of tournaments and weekend re-treats					
<b>Action</b>	<b>Lead Role</b>	<b>Potential Partners</b>	<b>Funding Options</b>	<b>Challenges</b>		
Create an annual calendar of events that have occurred over the past five years	Economic Revitalization Committee	Steinhatchee Chamber of Commerce SPB	CSA			
Develop a strong relationship with organizations and event promoters						
Identify opportunities for participation of Steinhatchee Waterfronts Florida Partnership	ERC					



## STEINHATCHEE WATERFRONTS FLORIDA PRIORITY ISSUE AREA

### Economic Revitalization

#### GOAL 5D: Promote tourism and natural resource-related opportunities at Steinhatchee

		Timeline				
		2008	2009	2010	2011	2012
Objective 5D.1 -- Maximize local benefits from tourism and natural resource-based activities						
Strategy 5D1.2 -- Partner with organizations at Steinhatchee, Jena, and Keaton Beach to create a media campaign to route travelers to the coast						
Action	Lead Role	Potential Partners	Funding Options	Challenges		
Develop strong relationship with individual / organizations in neighboring communities	ERC Taylor Co. Tourism Development	Steinhatchee Chamber of Commerce	CSA		----	
	Taylor County Development Authority				-----	
Identify media resources available from the Taylor County TDC and from regional and state agencies	ERC	SCC			-----	
	Taylor Co. Tourism Development					
	Taylor County Development Authority					
Create brochures, flyers, and ads for distribution to multi-county area	ERC	SCC	Visit Florida		-----	
	Taylor Co. Tourism Development	TDC	Enterprise Florida (OTTED)			
	Taylor County Development Authority					

**STEINHATCHEE WATERFRONTS FLORIDA PRIORITY ISSUE AREA**

**Economic Revitalization**

**GOAL 5D: Promote tourism and natural resource-related opportunities at Steinhatchee**

		<b>Timeline</b>				
		<b>2008</b>	<b>2009</b>	<b>2010</b>	<b>2011</b>	<b>2012</b>
Objective 5D2 -- Ensure awareness of economic and ecological value of environmental resources.						
Strategy 5D2.1 -- Promote canoe and kayak tourism and recreational activities as low-impact economic opportunities						
<b>Action</b>	<b>Lead Role</b>	<b>Potential Partners</b>	<b>Funding Options</b>	<b>Challenges</b>		
Develop strong relationship with state and regional agencies that promote low impact recreational opportunities	Economic Revitalization Committee	SCC FWC SRWMD OGT	CSA			
Create brochures, flyers, and ads for distribution to multi-county area	ERC	OTTED SCC Taylor County Tourism Development				

## STEINHATCHEE WATERFRONTS FLORIDA PRIORITY ISSUE AREA

### Economic Revitalization

#### GOAL 5E -- Explore options to renew / revitalize traditional economy

	Objective 5E.1 -- Ensure opportunities to create and/or re-establish commercial production of seafood and marine products at Steinhatchee	Strategy 5E.1.1 Partner with Taylor County government to investigate purchase of waterfront property for commercial fishing / marine products through the Stan Mayfield Working Waterfronts program	Timeline							
			2008	2009	2010	2011	2012			
<b>Action</b>	<b>Lead Role</b>	<b>Potential Partners</b>	<b>Funding Options</b>	<b>Challenges</b>						
Work with Taylor County administration to identify opportunities for acquisition of property for commercial purposes	Economic Revitalization Committee	TCGC	CSA							
Identify potential uses for such property	ERC									
Identify and prioritize waterfront or near-waterfront property	ERC									

# STEINHATCHEE WATERFRONTS FLORIDA PRIORITY ISSUE AREA

## Economic Revitalization

### GOAL 5E -- Explore options to renew / revitalize traditional economy

		Timeline				
		2008	2009	2010	2011	2012
Objective 5E.1 -- Ensure opportunities to create and/or re-establish commercial production of seafood and marine products at Steinhatchee						
Strategy 5E 1.2 Partner with organizations in Big Bend area to create a market for tourism of cultural heritage of commercial fishing						
Action	Lead Role	Potential Partners	Funding Options	Challenges		
Identify organizations focused on cultural heritage tourism	Economic Revitalization Committee	TCGC SCC FWC Florida Department of State	CSA		-----	-----
Work with local groups involved in tourism marketing to include cultural heritage of commercial fishing	ERC	Taylor County Coastal Committee Taylor County Extension Office				

---

## VISUAL REPRESENTATIONS

---



*Steinhatchee Commercial Areas*





*Steinhatchee Commercial Areas*





*Steinhatchee Vista 2008*





*Steinhatchee Commercial Areas*





*Steinhatchee Residential Areas*





*Steinhatchee Residential Areas*





*Steinhatchee Residential Areas*





*Steinhatchee Residential Areas*



*Current Project Sites*





*Steinhatchee Views*





*Current Project Sites*







*Current Project Sites*



*Steinhatchee Otters*



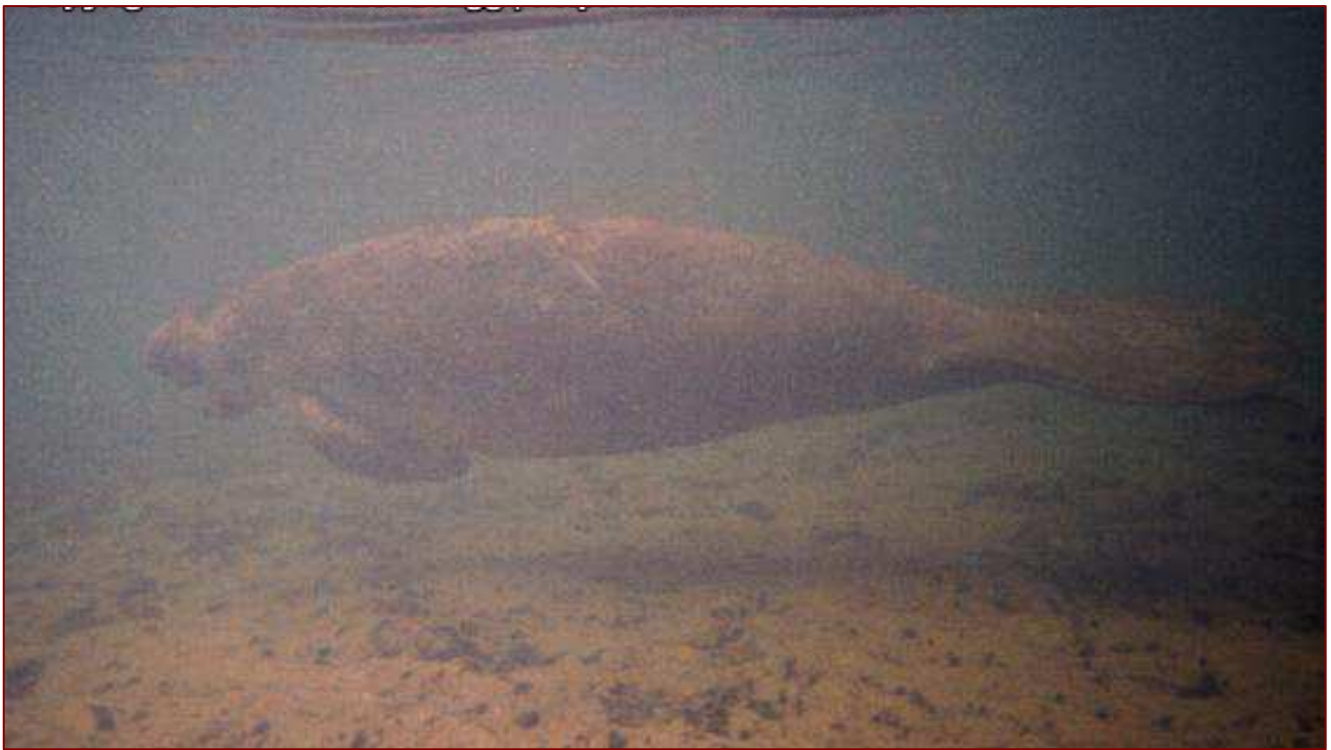


*Manatee in Steinhatchee*





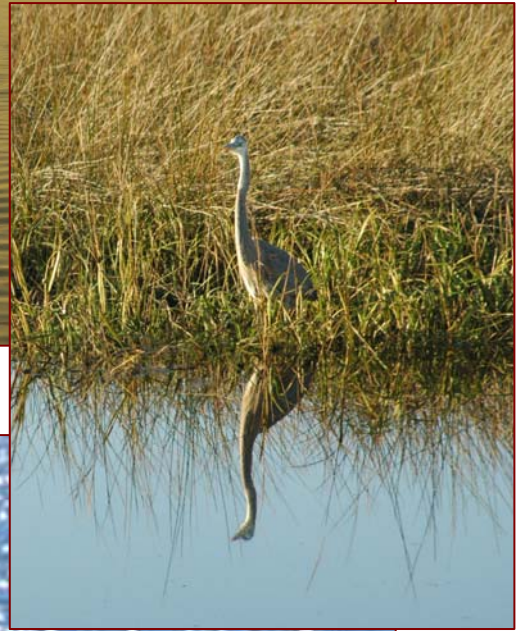
*Steinhatchee Native Habitat*





*Steinhatchee Native Habitat*





*Steinhatchee Native Habitat*





*Steinhatchee Coastline*





*Views from shoreline*







*Steinhatchee Bridge and view of Deadman Bay*



*Steinhatchee Community Center*

---

**THIS PAGE LEFT  
BLANK INTENTIONALLY**

---

**Appendix 1**

**Stories Along the Steinhatchee River  
by Meredith Lee**

# STORIES ALONG THE

Historic maps  
Events 1850-1950

by Meredith P.  
Lee

## STEINHATCHEE



## Meet your neighbor

Esther Sheffield holds the distinction of having been crowned the first Keaton Beach Mullet Queen at the initial festival held in 1974. She also was one of the original founders of the popular event and has been instrumental in its continuing success.

Esther has lived at Keaton Beach since 1965. Until her retirement in 1975, she owned and operated Sheffield's Marina there.

A native of Taylor County, Esther is the daughter of James F. and Eula Hodges. She married William J. Sheffield "at an early age" and raised two children, a son and daughter.

In the early years of their marriage the couple lived in Berry, where William was employed by Buckeye Cellulose Corporation and Esther was kept busy with the duties of housewife and mother.

In 1964 the Sheffields decided to buy the Keaton Beach Marina with plans for Esther to run the marina while William continued working at Buckeye.

Their plans were disrupted when William died suddenly of Leukemia just before they took over ownership of the new business. But Esther decided to try operating the marina alone . . . and she did for the next 10 years.

"I couldn't have done it without the help of loving



Esther Sheffield

left her marina to go fishing in the Gulf. When they failed to return, search crews were organized to look for them. Esther closed the marina and converted it into headquarters for the search.

For an entire week, night and day, Esther and her friends cooked meals and provided encouragement to the searchers. But unfortunately the missing fishermen were never found and the search was finally called off.

Fondly known for her outgoing and salty personality, Esther devotes much of her time to helping others. Last month she brought thirty-five residents of Sunland Training Center from Tallahassee to Keaton Beach for their own "Mini Mullet Festival."

After treating the retarded boys and girls to a boat ride in the gulf, she served them a big mullet dinner with all the trimmings. Esther herself

is confined to a wheelchair. When he was thirty years ago weighed 1 pound 6 oz at birth, Esther feels a miracle that he survived.

Daughter Sue Smith lives in Holston, where she and husband are co-captains of a large crew boat ferries men and supply off-shore oil rigs.

Esther's two grandchildren keep hopping on wheel when they visit. "Come" at the beach. The week she spends time visiting. "I'm fishing and hunting also" reserves some for the favorite sport.

Any of these ho were temporarily long this past week, how while Esther assumes leadership role in preparing for the 1979 M Festival.

"It's a lot of hard but it's fun too." Esther said of the annual festival. "I particularly seeing old friends haven't seen in years greeting new people come from far away in our fun."

Looking back over years, Esther said, "Life may not have spectacular, but it's been a lot of fun. An the love and help of it's been a good life concluded."

Stories Along

The

Steinhatchee

River

BY

Meredith Lee

The Steinhatchee River  
Introduction

In the late 1800's, I was hunting and tending my traps on the outer islands of the northern Gulf waters, when I found a river I thought no one knew about. The banks were such a tangle of growth, surely no one lived there. The swamp grassland led me further in from a wide mouth into a deep narrow winding gorge of a river.

My sounding line never reached bottom in many places and the river curled back and forth like a living serpent, wily and treacherous. I came in easily on a swift volume of water, but when I tried to turn about the incoming current pinned me against a large rock on the southside. Where a wide marsh kept me in the boat.

I glanced up at the north bank, high and dry, and there loomed over me -- a towering Indian Mound. It was then I knew it had been discovered before me.

In fact, a long time before me.

Adams and Lee Handcrafted Books  
P.O. Box 426  
Steinhatchee, FL 32359

I anchored my boat to the rock and sat in awe of the scene. Something had attracted the Indians here. What was it? I aimed to find out what kept them here so long. I had to wait for the change of tide to carry me back out. So I had time to think about it. I threw my line in the reddish colored water and it became taut abruptly. I had a large fish to pull in the boat. As I pulled in more fish and more fish, the current gradually released its hold on my boat and I vowed to come back someday and see what else the banks had to offer.

Years later I came to stay, but I had come in by the south bank as there were no wagon roads or wide paths on the north side. Over grown by years of no use, I aimed to change that in time.

Much later arrow head material was discovered near the waters edge, so the Indians had many reasons to stay.

Jess Hamilton told  
this story to his  
son, Lee Roy.

Copyright 1991

Revised 1995

#### Preface

Being a pioneer of another Florida area, I must gratefully acknowledge the contributions and stories of the people of Steinhatchee, whether it was knowingly or not, it was part of their history and their story. Without them this would be all for nothing.

There are three;  
Nelson Wood  
Lee Roy Hamilton  
L.C. Grisham

Who contributed the most of their time taking me on a tour of the past of either being there, or giving stories handed down from their parents. To them I am most respectfully grateful.

Thank you all,

Meredith D. Lee  
author



The Steinhatchee River flows swiftly, bubbling out of springs from the once great cypress swamps near Cooks Hammock.

Reacting much like longer other rivers in north Florida, drained down from the lower Georgia land and snaked through the Florida levels, sometimes sinking and springing up farther along, but always headed for the Gulf of Mexico — took with it acid colored swamp water and outer level sands. — deposited the sand in an ever growing shelf far out into the Gulf ten miles or more.

This shelf of sand held only a few feet of water during low tides. Unsuspecting ships searching for narrow rivers or harbors were easily grounded. Sometimes Spanish ships were caught on the low tide and attacked by hostile Indians. After killing the men and looting the ship would leave it to fill with water and sink on a rising tide.

1864 a Federal ship in search of the St Marks river grounded off against this unseen

2.

outlet of this narrow silent river. It floundered turning on its side in the low water. The men could have walked to shore eight miles away, if they had only known. But as the tide came in so did the enemy. Some were former Confederate soldiers others were Independent Raiders. They appeared from nowhere in their boats, rowing silently along side in the dark of the moon. Their silent razor sharp knives found their victims. They loaded what cargo they could on their small boats and left the men and ship to the mercy of a watery grave. Unknown to the Bushmen of the Marshland, a payload lay deep in the hole of the ship. Only after years of breaking the ship apart did the water spill the Silver into the sand shelf awash and mounting for future generations to search for in vain.

The final tragedy came in the name that hung on a century old bay, outside that silent deep river. The Bay became

3.

known as "Dead Man's Bay"



The settlers who came with James Howard Stephens 1879 saw it as a curse to the land. Some hated the sight of it on their maps and proceeded to name their port of departure something else to try to erase the name of the Bay. 1920 James Howard's son Bob Stephens, who had contracted with the logging operation beginning there, to take all the cedar they cut and make rafts of it sending it down to Cedar Key. He named his outlet to the Bay, Cedarville.

There was a pencil factory in Cedar Key, After they used what cedar they wanted, they sent the rest of the wood north by rail. The demand became so great that all huge trees were cut to the ground. Also, cypress and oak found a waiting market and were cut to the ground. The trees were hundreds of

4.

years old judging by the size of them, eight men could stand shoulder to shoulder around it barely making the girth of it. The Cross City Library has a book of pictures taken by the Shamrock saw mill as proof of the size of the cypress they cut. Second generation seedlings are still rare and a prize to own.



A man named Jeferts donated a portion of land along the the river when he died as a sort of Park for the town. He wanted to preserve some of the beautiful trees on it for others to enjoy. Some are up back of the old post office, J.C. Stewart's old store. Some are on Mitchell's land and some are on Doshers's land what used to be Roebuck's, an old settler. There are oak, and old magnolias, several are 72 inches in circumference or six feet around.

5.

Mr. Stephens is buried in a small plot close to his old homestead.

The settlement farther up the river was named after him, "Stephenville". It stayed that way for many years, but as the area grew and the two villages began to merge they decided to use another name, "Steinhatchee"

If you will look it up, you will see "Stein" means water or liquid contained in a small deep place. (which describes the narrow deep river to a T) and that "hatchee" means an opening into a larger area, as it certainly does to the Gulf of Mexico. Hatchee is an Indian word. Stein is of another origin possibly German-who knows.

\* \* \*

1920's

Nelson Wood was a young boy about eight when he remembers riding the tram out of the area as there were no roads at the time.

The logging routes had narrow gauge rails to take out the heavy logs. Oxen were used to

6.

pull the logs to the steam skidder that lifted them up on to flat beds and then pulled to the main railroad line. There was a water tower and wood yard on the way to the main line. It kept the skidder supplied with fire and steam. A grave yard was nearby where ones who died in the area could be buried.

The earliest one buried there was Strickland in 1901 with no initials. There are 19 buried there and the last one was V. Russell 1983. So they were not all connected to the logging operation.

The loggers lived mostly in Tide City, which was unpainted small houses with tin roofs.

Dallas Landing was the link with the water and boats and fishing, etc. The tram ran direct from Dallas Landing to Salem, where it met the main railroad. The destination was Foley Saw Mill near what is now Perry, Florida. The boss of the operation used pump railcars to check on the work that was being done. It was a hard

7.

life. It brought out the best and worst in men, and many lost their lives to it. Logging cleared the land. When the sand began to grow, their planted pine trees, Turpentine Camps, gradually moved in as the trees became of age.

More men were needed and as there were no prisons for the growing number of convicts, they were hired out by the state for 57 cents a day. The bosses had to be as tough and hard as their men, some were more so. They carried guns and whips. Sometimes death was a welcome out if there was too much cruelty. It was a rough battle either way.

At first, the mail came by way of the Dixie Turpentine Camp as they had the only passable road. Then a regular Post Office was set up in Jena, and they rowed the mail across to Stephenville.

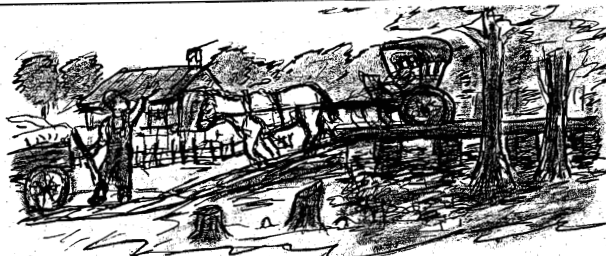
Later, about 1926 a wagon road was cut out and a bridge built over the bogs. Huge round metal cylinders were filled with hard compound

8.

and long timbers were built into a bridge over them. It was called Boggy Creek Bridge. The old metal cylinders still exist today, though the timbers have long since rotted and young cypress now fill the empty gaps. The original road is still in use, but by hunters and lumbermen. It is about a half mile north of the new asphalt road.

Jim Hightower built a house on the north west corner of the bridge and put a wooden fence around it. He became a self appointed greeter of new comers to the area. He was five miles out and he encouraged them to keep going just a little farther to their dream by the river.

He lived there quite a while before some drifting renegades caught him outside his fence without his gun. They attack him, robbed him and beat him to death. Now only a faded wooden marker in a high cypress grove marks his final resting place. His house has gone, even the foundation and fence are erased from the land.



9.

After the road came through, the Post Office was moved across the river from Jena to Stephenville. Also, a pull cable was stretched across the river at a narrow level point and a ferry was built to carry horses, wagons and such. Later when the auto came into being, the ferry had a model A motor attached to it and the cable was dropped into the water only as a guide.

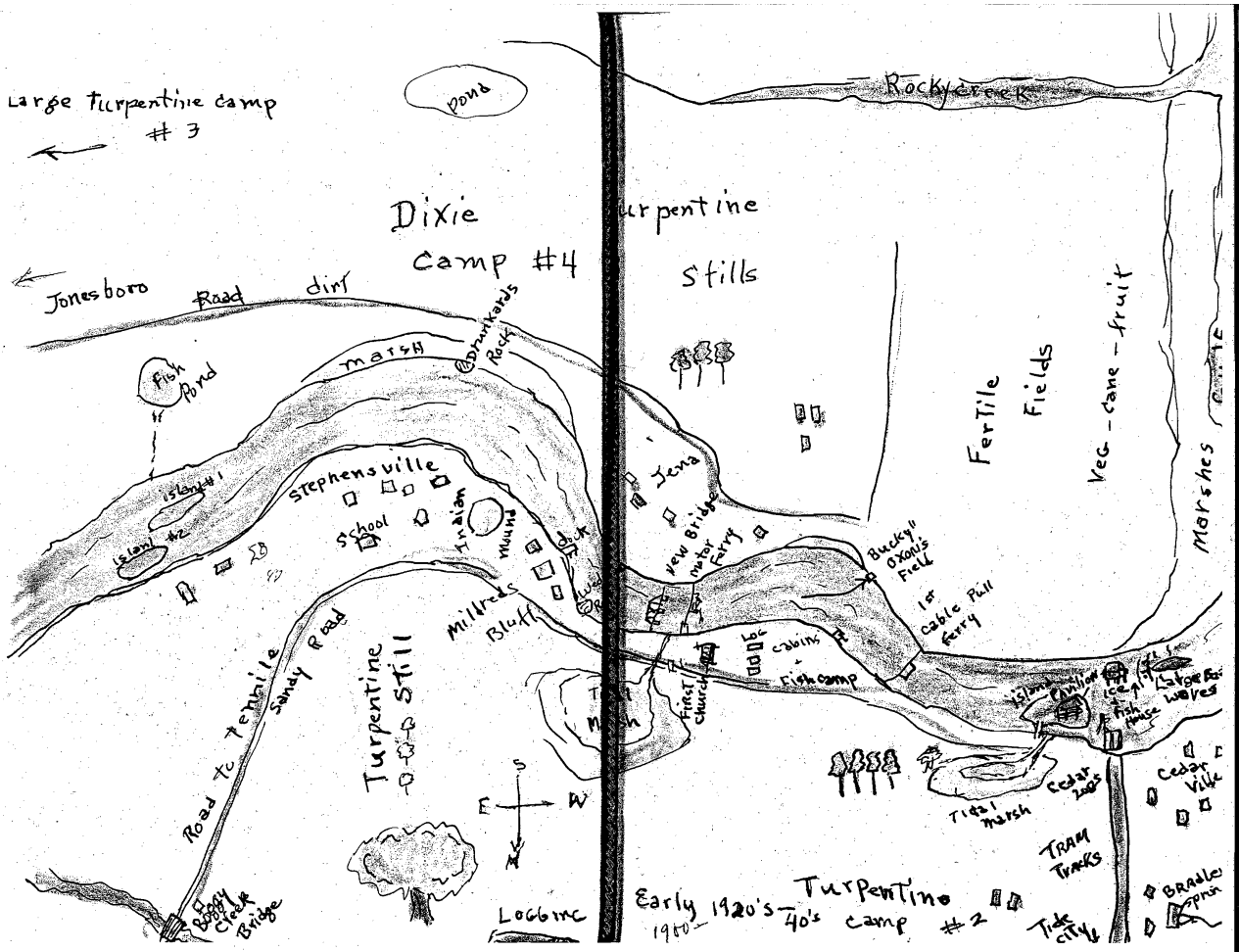
During bad weather, the ferry did not operate and the cable was left deep in the water. One such time was the hurricane of 1935. There was no warning like there is now and a fleet of sponge divers and their boats were caught out on the shelf in the Gulf. The next morning, over half of ships were bottom up. It was reported by



someone who was out searching for his own fishing boats that had gotten away in the high wind and water and it took him weeks to find them in the marsh and drag them home.

It was a long while till motors were put on boats. The people were too poor to buy them for a long time after they were in.

There was an oxen that worked the Jena fields and it had to be rowed in a scow every day from Stephenville down river to his Jena field by its owner. It was a very calm cooperative animal. After work each day it went back to the same place and stepped back into the scow for its ride back home. It stood perfectly still and never showed any emotion. The only thing that put fire in his eye and made him shake his bell on his neck and try to horn one was for someone to shake their fist in his face.





Springs and the Turpentine Camp near there. He rented out the house to a farmer in Jena, who got permission to move the house closer to the river. After a time he found it more to his liking to have the house across the river, and he asked Bradley, through the Camp manager, of course, if he could take it apart and move it up river to Stephenville. Bradley agreed and so started a trend, it seemed. Every so often after that, a boat with a dismantled house came down or went up the river to seek new land.

The local people kept many livestock and there were no fences. Sometimes at slaughter time many hogs would be missing. They knew some locals had borrowed a few and they set out to find them, at their own risk. Their ears had been marked and if they knew where to look and had enough courage, they just might not get shot.

Close to Roy's and the Fish House used to be a marsh level, and a foot bridge over to an island where a pavilion was built. Out from that

was Rudolph's ice house in the middle of the river, and a wave where large boats could stop and get ice for their fish.

All these things have long since gone, the marsh level got filled and a road put in. Many other things have disappeared, such as the huge roof top Indian mound. Young children used to go by it after school in Stephenville and dig a little out of curiosity but some others must have dug a lot. Then there was this fenced in graveyard at the end of the Turpentine Still up that way, that had fourteen marked graves and it has been wiped clean of the earth. I imagine the graves are still under the ground but who knows where, now. Then there was these two immense big rocks on the edge of the river that are both gone. One was at Lazy Bend called, "Drunkard's Rock" when someone rowed up to it, it would make a strange gurgle, and gulping sound like a person drinking. And the other rock was down

river from Cooley's on this side. It was large enough to hold a couple and a preacher to set them in wedlock.



About 1942-3 a huge barge brought into the river a swinging draw bridge. It came from the area of Blountstown and down the river there into the Gulf. It was the most welcome thing that had come along in a long time. Now free flowing traffic could go back and forth across the river come foul or fair weather. No more ferry crossings, and the problems it presented, with a strong running tidal current.

World War II 1943, began to demand more turpentine products. Pine forests died out as the sap was drained out of the trees. But now a new method of getting the pine tar was developed, called Chipping at the very base of the tree. It did not kill the tree as before and left it good for lumber after the tar was

extracted.

Though the automobile helped to get out of the area, the road was still difficult to travel on, mostly too sandy or too wet and marshy. If that did slow one down, there was always something to stick in the tire and cause a flat. The tire had to be taken off and the innertube mended. One had to glue a patch on it then put it all back together. In the blazing hot sun or pouring rain or sometime the freezing cold. Anyway they had it, it was an all day journey just to go to Perry to shop. Most of the time it was a sleep over with relatives in order not to travel the traitorous trails in the dark early morning hours.

After the War 1946 came the electric lines, lights for the house and ways to make their own ice, not long after refrigeration for the houses, too, and more electric things than they had ever dreamed of.

The young boys soon learned the river by heart and where to get off the river and go back to a favorite fishing hole, one that was a secret shared only with a trusted friend. Mama was always delighted to see a string of bass or trout come home for supper, no matter where they got it. The children made new paths in the summertime to friends houses to keep out of the vicious sand spurs. Bare feet had been in for a long time and they had to be protected. Shoes were only for Sunday and to go to town.

Going to town also brought on powder and paint for the women as they could get it there. Young girls sometimes dabbled in it when mama was busy else where. And when they came out to play, the boys laughed and called them clowns, but they didn't care. They were pretty like their mama's looked when she went to town.

By this time the place had grown and gotten more people and the name "Steinhatchee" was posted on the Post Office, the other

names that went before were gone. The P.O. moved quite often, as the ones appointed to serve became ill or moved and such.

There were many supply stores by now and it seemed they had all had the Post Office at one time or another. I could name the places and people, but it wouldn't mean a thing, most of them are gone along with the stores. The Stewart store is the last one left standing and it was in use up till a few years ago. Then the brick Post Office was built and modernized the service quite a bit.

Steinhatchee has always been a close knit community and isolated in as much as it is off the beaten path. The people are independent and extremely resourceful and filled with pride. Which is a definite asset when living in isolated rough territory. But many others have taken advantage of this isolation to use it for hiding from the law or doing something they hadn't ort to..

Many of the old timers wish for better times. And hope some day to be rid of the bad reputation that's gotten spread far and wide. Because as the nation becomes over populated we need these off the beaten track places to renew our lives and spirit from the "hallobaloo" of a rat race that goes on in many other places.

In other words, more and more people from populated places are seeking out this area for recreation. Fishing and hunting has become the major recreation and we hope to have and hang on to enough of our resources to be able to keep these things there to offer. Even those have to be looked after by regulator now and then so as not to write about them in the past tense like your author has been doing in this "Tales Of Steinhatchee."

#### Glossary

- Waves- where the underwater land takes a sudden drop in depth and it makes waves as the strong tide comes in and out.
- Skidder- A steam driven vehicle with a tall crane that can reach on either side to pick up logs.
- Tram- a vehicle on the tracks to carry people and supplies.
- Turpentine Still- where pine sap and tar was collected and poured in a heated vat. It was then put in wooden barrels for shipment to Naval stores. It was used to water proof wooden ships.
- Turpentine Camps- where people were housed and fed who worked the stills.
- Pump rail car- a square platform on a pair of wheels with a rocker arm in the center. Two men with a see-saw motion could propel it swiftly down the tracks.
- Scow- a shallow wooden row boat with blunt ends. It never needed to be turned around to row back. Easy to step off to the ground, maneuvered easily in tight places and shallow water.

Additional Information  
discovered in files - 1995

One particular tree that survived the logger blades stands on the curve east of Roy's restaurant. It is three to four stories high and in the fall the hardwood Hickory turns a brilliant yellow. This makes it hard to miss and a joy to behold.

After the logger operation slowed down to nothing, houses and people occupied the land scattering here and there. Many times their neighbors were hidden by undergrowth and young trees and even swamps. But this did not stop them from checking on each other. "Hoot-an-holler", became the daily call and answer signal if all was well. If silence was the return to a call, then neighbors set out quickly to find out why. In the case of V. Russell they found her dead in the chicken coop. She died gathering eggs. They buried her in the nearby cemetery at the old woodshed and water tower of the loggers.

continued --

It was widely known that after the Civil War, men migrated into Florida to steal and cause trouble. They knew there was no law and order at all. Instead of the north leaving troops to help the people reconstruct their lives and towns, it abandoned Florida. They left very few troops and with drew all the embargo ships that could bring in supplies.

Consequently, chaos was a great place for anyone coming in to take charge and do whatever they wanted to do. It had become a more dangerous time for many, than even times during the war.

There was no one to stop whoever had the most power or the most gumpshin to take over. Sole powers of authority could rest with magpie sheriffs or straw bosses and nobody could stop the on going cruelty at work places that had drifters or convicts for workmen. One was as mean as the other, but the one with the whip and the gun usually won.

---

**THIS PAGE LEFT  
BLANK INTENTIONALLY**

## Appendix 2

### Steinhatchee Waterfronts Florida Partnership Map of Designated Area

#### Steinhatchee Waterfronts Designated Area



Figure 1. Community Familiar Map and Boundaries of Designated Waterfronts Area

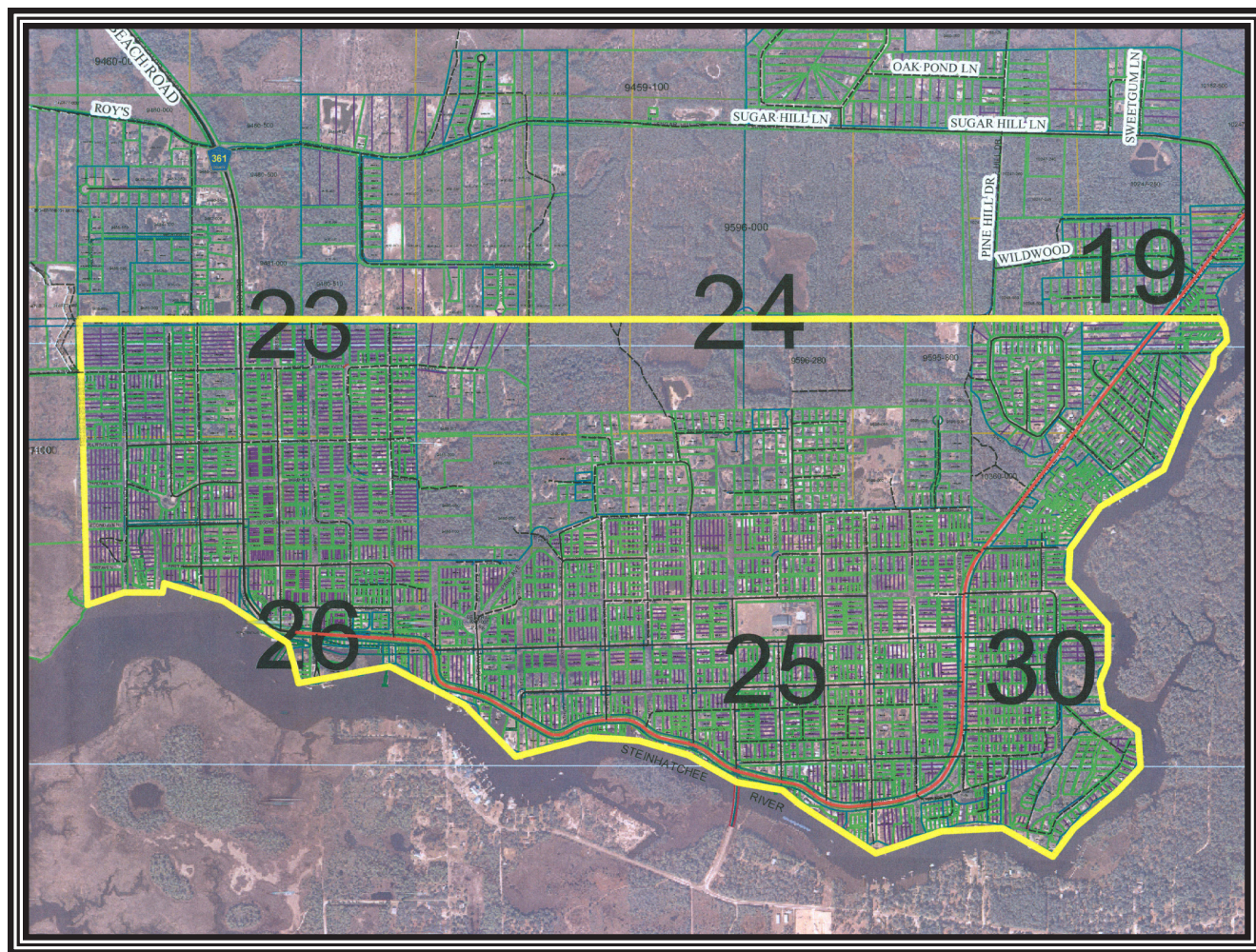


Figure 2. Application Map and Boundaries for Designated Waterfronts Area



---

**Appendix 3**

**Results of the September 2007 Steinhatchee  
Community Center Meetings**

## What Makes Steinhatchee Special?

- ❖ The sunsets
- ❖ Haigan's Cove
- ❖ Catching fish and scallops
- ❖ Lack of high-rise buildings
- ❖ No hustle-bustle
- ❖ A feeling of being on vacation; in the air
- ❖ Small communities come together in times of need
- ❖ The diversity of the people; they all fit
- ❖ People stop in the middle of the road to talk
- ❖ Like family
- ❖ The last frontier
- ❖ The river
- ❖ Access to the Gulf
- ❖ Pepperfish Keys; skin diving
- ❖ Seagrass preserves
- ❖ Wildlife along the river; birds
- ❖ Lack of pollution
- ❖ Relaxing; unhurried
- ❖ Local businesses; not big box stores
- ❖ Having to leave town to go shopping
- ❖ Lots of state land
- ❖ The people; friendly, small community network; everybody knows everybody
- ❖ A sense of community
- ❖ Natural flora
- ❖ Old Florida
- ❖ No traffic
- ❖ It's my home
- ❖ Great place to raise children
- ❖ Family atmosphere
- ❖ The place I got married on the river
- ❖ It's welcoming
- ❖ Yellow Pages
- ❖ People are willing to share their lives and history
- ❖ All of the above; came from Atlanta!
- ❖ Watching eagles play
- ❖ No urgency; slow pace
- ❖ Sitting on the back porch and seeing manatees, other wildlife and sunsets
- ❖ Mr. Wilson's house; the view of wildlife and the Gulf
- ❖ Seafood; commercial fishing

## Identified Stakeholders in Steinhatchee

- ❖ Marinas
- ❖ Tourists (Recreational Fishing, Scallopers & Eco-tourists)
- ❖ Recreational Fishermen
- ❖ Businesses:
  - Restaurants
  - Realtors
  - Charter/Commercial Fishermen
  - Developers
  - Campgrounds & RV parks
  - Repair shops
  - Motels
  - Grocery stores
  - Banks
  - Builders
  - Local retailers
- ❖ Community Organizations
  - Projects Board
  - AARP
  - Garden Club
  - Red Hat Society
  - Other small organizations
  - American Legion
  - Beta
- ❖ Government Entities
  - County Commission
  - Planning Board
  - Water Management District
  - Army Corp
  - Department of Environmental Protection
- ❖ Chamber of Commerce
- ❖ Schools
- ❖ Churches
- ❖ Full-time, native and part-time residents
- ❖ Property owners
- ❖ Clinics; Health professionals
- ❖ Water authority
- ❖ Electric co-op
- ❖ Local artists and writers

## **Objectives of the Visioning Process (Voting Exercise)**

1. Identify what people treasure and want to maintain. (20 votes)
2. Develop clear, doable strategies and actions. (11 votes)
3. Seek agreement on common goals. (9 votes)
4. Identify and balance different desires (6 votes)
5. Create a sense of identity for Steinhatchee. (4 votes)
6. Build commitment needed for plan adoption and implementation. (4 votes)
7. Establish needed structures and coordination (2 votes)

\* Everyone agreed that all of the objectives are important in a visioning process. This exercise was to help demonstrate different priorities that participants may bring to the Steinhatchee visioning process.

---

**Appendix 4**

**Florida A&M University Visioning Project -  
Renderings and Materials**

# Steinhatchee, Florida: Riverfront Visioning Project



## Quick Facts

County: Taylor  
 Population: 1,453  
 Growth Rate: 0.8%  
 Median Family Income: \$34,929  
 Median Household Income: \$26,188

Source: US Census Bureau

## Waterfronts Florida Program

In May 2007, Steinhatchee was designated as a Waterfronts Florida Community by the Florida Department of Community Affairs. The result is a special area management plan to guide the revitalization of the community's designated waterfront area. This project will enhance the community's efforts to fulfill the Waterfronts Florida objectives.

Source: Florida Dept. of Community Affairs

"I want to see little cracker style houses, in rows, like it used to be"

-Local Resident

"People come on the weekends and fish but won't spend a dime"

-Local Resident

"...no parking for miles along the river..."

-Local Resident

## Delicate Ecosystems



## Culture & History



## Township



## Fishing Industry



## New Development



## Unique Heritage



## Location Map



## THE STORY OF STEINHATCHEE

Rivers have nourished delicate ecosystems and humble human cultures for millennia. Since the 1800s, Steinhatchee was a self-sufficient fishing village steeped in river culture and history, and remained hidden from real estate developers as a part of the "forgotten coast" of Florida.

As coastal property value skyrocketed, development finally began to creep into the marshes of Steinhatchee, a township that has only the resources and protections offered by Taylor county, one of the least prosperous and populated in the state. Without a city's development regulations, tax-based infrastructure, and powerful watchdogs, Steinhatchee lay unprepared and ripe for the taking.

Compounding the situation, recent changes in state fishing and wildlife law have adversely affected the economy. In response to these changes, the fishing industry moved from its historic commercial base to a recreational industry. At the same time, the real estate bubble burst, and many brand new developments are vacant.

This riverfront visioning project is the key to unlocking Steinhatchee's future as a vibrant recreational destination. And ultimately, empowered by a unified vision of its growth, the community will restore and maintain its collective unique heritage.

## "Esteeen Hatchee"

The name is derived from the Muskogee "ale" (down), "ist" (man) and "hatchee" (creek). It means "dead man's creek."

Source: Florida Dept. of State

## Table of Contents

1. Site Analysis: GRACES
2. Analytic Studies
3. Conceptual Studies
4. Community Center
5. Proposal A
6. Proposal B
7. Proposal C
8. Fishmarket
9. Proposal A
10. Proposal B
11. Proposal C
12. Other Sites
13. Recommendations
14. Implementation

"I'd much rather go somewhere fresh water and catch as many brim as I can - ends up being cheaper after the gas."

-Local Resident

"...good down home home country folk..."

-Local Resident

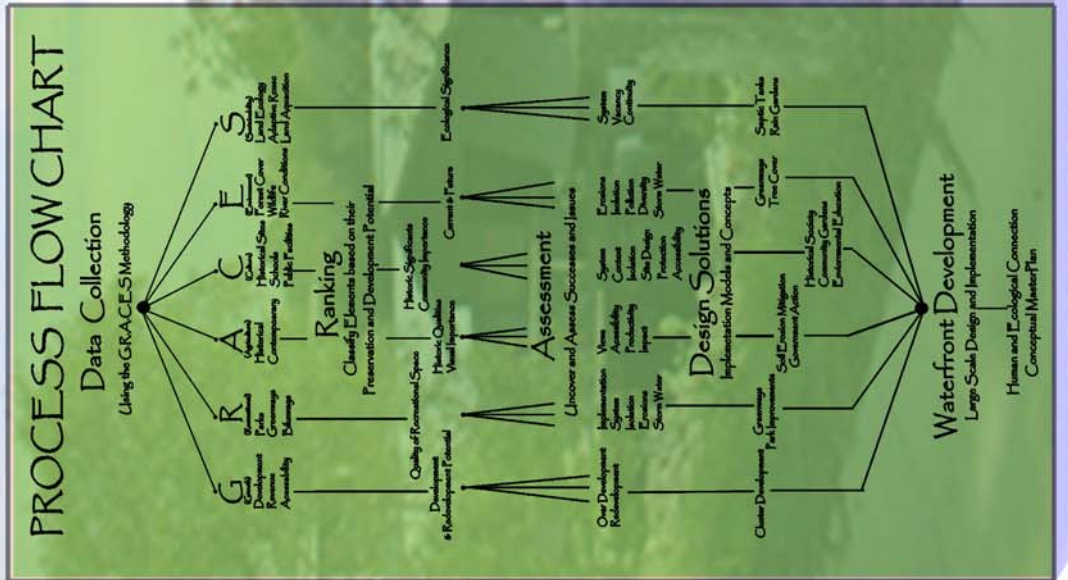
"We need a place for the kids to hang out."

-Local Resident



# Steinhatchee, Florida: A Riverfront Visioning Project Site Analysis - G.R.A.C.E.S 2

The GRACE acronym, in addition to providing a framework for the use of specific criteria in the analysis, connotes a spirit of place. It facilitates one of the goals of the project, to give Taylor County a unique landmark (6) that clearly lets visitors know they are "there". The analysis was confined to the portions of the county where access to water was possible.



<b>G</b> Growth	Potential opportunities for land acquisition and Smart Growth	Population Distribution Transportation Network	Taylor County's infrastructure provides adequate access to its coastal areas. The roads to popular destinations, Keaton Beach, Steinhatchee, and Spring Warrior are county maintained and paved; the roads to other potential sites are not. Also, adjacent natural areas need to be protected.
<b>R</b> Recreational	Diversification in recreational activities and social events that promote relaxation for a healthy body and mind.	Land Recreation Water Recreation	Recreational scalloping, fishing, and boating are very important activities in Taylor County. Access to preferred sites is limited by the amount of available parking for vehicles and boat trailers, adequate ramps for larger boats, and the lack of well designed roads into access sites.
<b>A</b> Agriculture	Relating to agriculture or farming, soils providing great land for crops, and a possible import and export trading network.	Land Use Soil Type	Agriculture in Taylor County occurs inland not along the coast. The major activities of forestry and cattle ranching are clearly delineated from the uses along the coast. Here the mostly organic soils and limestone substrate are unsuitable for the construction of structures but are desirable for citing of parks.
<b>C</b> Culture	Relating to shared knowledge and values of a society.	Historical Sites Cultural Activities	From industry to recreation, nature provides the setting for understanding the culture of the people in Taylor County. Providing increased opportunities for the people to use the water resources will fortify the character of the County's cultural identity.
<b>E</b> Environment	Concerned with the ecological effects of altering the environment.	Protection Waters Watershed	Protected waters, topography, and natural communities are environmental factors that should be taken into account when considering recreational development.
<b>S</b> Sustainability	Concerned with the sustainable effects of altering the environment.	Water Resources Employment	Natural resources should be respected and celebrated with design conditions.



# Steinhatchee, Florida Riverfront Visioning Project

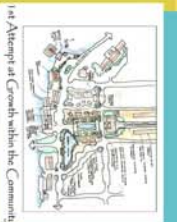
Using the GRACE5 analysis as a basis, the designers analyzed Steinhatchee to aid in the development and implementation of design initiatives. A site visit and a thorough cycling of ideas led to the following compilation of images and information.

Maps of Steinhatchee's topography, flood plain, and relevant features provided valuable cultural background and environmental data.



**Images** Steinhatchee is a community that derives a great deal of activity and commerce from the Steinhatchee River. The series of images below depict the current state of Steinhatchee as well as possible improvements.

 Areas of Design  
 Points of Interest  
 Proposed Old Steinhatchee Trail



**Traffic -** More recently, automobile traffic has increased along pedestrian arches resulting in areas that are dangerous for pedestrians and bikers. This study investigates traffic patterns intended to improve traffic flow and increase safety.

Traffic Study Alternative 1



Traffic Study Alternative 2



Traffic Study Alternative 3



-  Major 1-Way Road
-  Major 2-Way Road





# Steinhatchee, Florida: A Riverfront Visioning Project

## Conceptual Studies 4

The conceptual masterplan represents an improvement of land conditions through a series of progressive changes that include expansion, enlargement, and refinement. Studies that may strengthen the township of Steinhatchee include traffic, parking, trails, parks, preserved wetlands, and focal points.



**THE CHALLENGE:** How do we provide a way for Steinhatchee to invite the world to visit while simultaneously maintaining a community sense of ownership and privacy, protect the resources that created the village, and still close the door on over - development?

**THE SOLUTION:** We will repair the disconnection that has occurred in the economy of the fishing village, improve the sense of community to extend past SR 51, and provide Steinhatchee some level of control of their future/destiny by proposing a front porch, a screen door, and a secure door for Steinhatchee's master plan.







Design Considerations and Initiatives	
Growth	<ul style="list-style-type: none"> <li>-Enhance parking and circulation to accommodate larger volumes of people.</li> <li>-Provide opportunities to promote economic expansion.</li> </ul>
Recreational	<ul style="list-style-type: none"> <li>-Present community gathering and activity venues for Steinhatchee citizens of all ages.</li> <li>-Consider proposed Steinhatchee trail and offer features to enrich that event.</li> </ul>
Agricultural	<ul style="list-style-type: none"> <li>-Increase acre beautification using native plant species.</li> </ul>
Cultural	<ul style="list-style-type: none"> <li>-Complement the sense of identity through celebrated landmarks and unique spaces.</li> </ul>
Environmental	<ul style="list-style-type: none"> <li>-Preserve the natural resources and habitats.</li> </ul>
Sustainability	<ul style="list-style-type: none"> <li>-Create low maintenance solutions utilizing adaptive reuse strategies wherever possible.</li> </ul>

<p><b>Boat Launching Site</b></p> <p>In order to keep up with the growing amount of boats in the area more boat launching sites need to be developed. This study examined areas in which the boat launches could be placed.</p>	<p><b>Trail</b></p> <p>Recreation and relaxation are usually linked by trails. The trails are lacking so this study investigates where to connect existing conditions to proposed conditions.</p>
<p><b>Focal Point</b></p> <p>There are a few areas within Steinhatchee that are undeveloped. The main areas of concentration where development was most important included the community center and the fish market area.</p>	<p><b>Park</b></p> <p>There are not many parks in the area. To make up for the lack of parks dead end streets are being transitioned into parks. This study examined areas in which the new parks could be placed.</p>
<p><b>Parking</b></p> <p>As the amount of automobile and boat traffic increases, the available parking spots have decreased. This study investigates ways to increase parking close to recreational areas.</p>	<p><b>Preserved Wetland</b></p> <p>For the purpose to create, restore, and enhance the area and native species in the area, this study identified areas to be preserved.</p>
<p><b>Gateway</b></p> <p>Gateways which are connection points that acts as entrances to other areas are important for wayfinding and recognition icons. Areas to place gateways were studied.</p>	<p><b>Recreational Hub</b></p> <p>There are quite a few recreational opportunities in Steinhatchee. Locating recreational "hot spots" that already exists and potential areas is the purpose for this study.</p>



# Steinhatchee, Florida: Riverfront Visioning Project

## Community Center Site Analysis

G		<p>Existing facilities and property are underutilized and parking is limited for anticipated growth</p>
R		<p>Improved recreation equipment and programming to provide activities for a wide range of age groups</p>
A		<p>Access to the water from the community center to fishing spots via county owned riverfront property</p>
C		<p>Cultural activities are limited to small indoor events, while there is a need for outdoor event spaces for large public celebrations</p>
E		<p>Enjoyment of the outdoors is an important part of life in Steinhatchee, but is not currently suited to public use</p>
S		<p>Storm culverts are poorly suited for pedestrian and bicycle traffic - stormwater management can be integrated into the site</p>

### Precedents - Visual References & Inspiration



Augusta, GA  
Amphitheater



Apalachicola, FL  
Nature Walk



Baton Rouge, LA  
Street Park

San Antonio, TX  
Riverwalk



St. Louis, MO  
Riverwalk



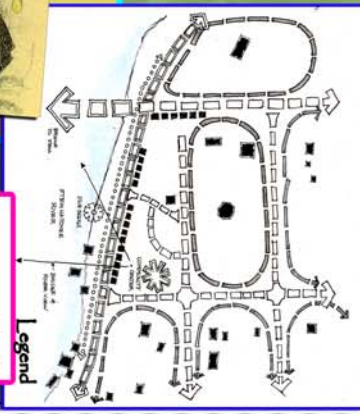
St. Petersburg, FL  
Riverwalk



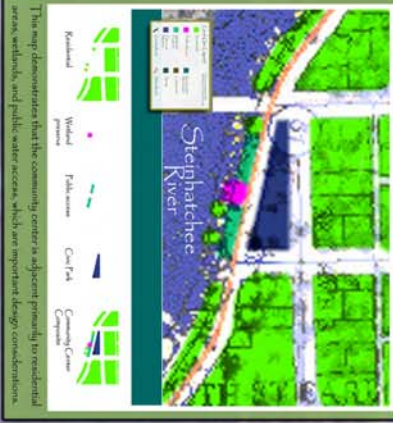
**SKETCHES & PROCESS WORK**



### Concept Diagram



### Land Use Map



### Principles for Making Parks Accessible to the Community

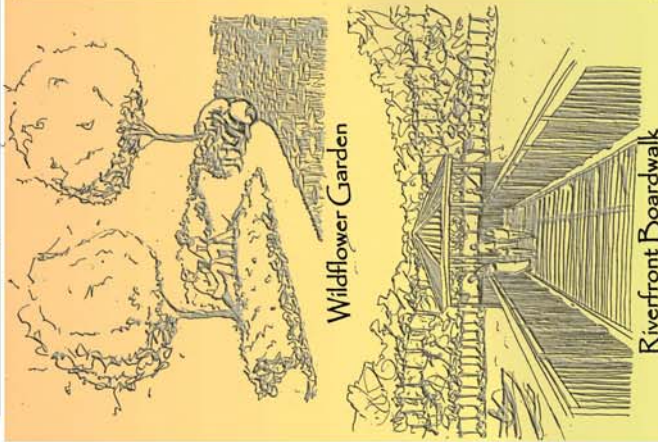
1. Make No Small Plans
  2. Ensure Effective Community Involvement
  3. Design for the Place and Its Users
  4. Support Parks through Public, Private, and Nonprofit Partnerships
  5. Create Programs for Diverse Users
  6. Manage Well and Cultivate a Constituency
  7. Make Maintenance Consistent
  8. Findle Funding
- Source: Parks, People, Places: Making Parks Accessible to the Community. Urban Land Institute
- 



The park will draw many people every day, with a boardwalk that seamlessly weaves together covered stages, play structures, gardens, a community center, a look-out tower, and several open grassy areas for games and picnicking. Together with artist-designed benches and plentiful public art, the park's activity creates a unique fusion for growth, recreation, culture, agriculture, environment, and sustainability.



Part 1 Part 2



Wildflower Garden

Riverfront Boardwalk



Conceptual Plan of Steinhatchee



Playground Area

Waterfall

Riverfront Community Park Signage

Aerial View of Boardwalk

**GROWTH** The Steinhatchee Riverfront Boardwalk will provide a unique tourist attraction to Steinhatchee Riverfront. The Boardwalk will also be used as an educational tool about the development of the riverfront area.

**RECREATION** The Riverfront Park will provide an area of enjoyment for both adults and children. The park has an area for tots as well as older kids, a picnic area, and an interactive water feature.

**AGRICULTURAL** The Wildflower Garden will provide an area of peace and beauty. In this garden one will have the opportunity to sit on a boulder or bench and enjoy a book or just take in the wonderful view.

**CULTURAL** The Covered Stage and Restroom Area will provide an area for entertainment and relief. These public amenities will be a great addition to the area.

**ENVIRONMENTAL** The Garden provides a home for birds and butterflies to be merry and multiply. The Riverfront Tower provides an area for passerbys to stop and watch the beautiful creatures enjoy their lives. The Riverfront Waterfall also provides a tranquil atmosphere.

**SUSTAINABILITY** Riverfront Walking and Biking Trail. Locals and tourists may experience beauty and solitude away from the hustle and bustle of the town's traffic on the beautiful walking and biking trail at the Riverfront Boardwalk and the Riverfront Park.



# Steinhatchee, Florida: Riverfront Visioning Project

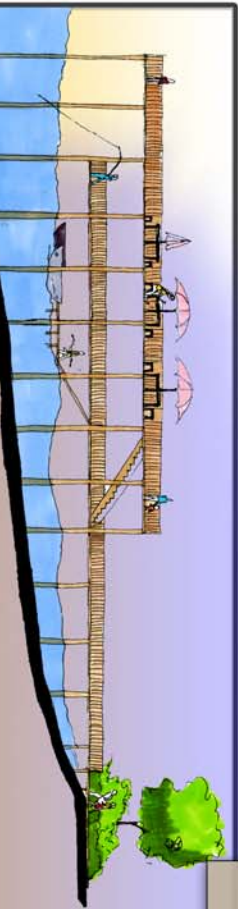
## Community Center Proposal B

### Fluid Boundaries Diagram

This diagram shows four distinct elements that were essential to the development of this master plan option. The blue line represents a fluid or dynamic boundary between the street, water, and community center property. The asterisks represent the primary entrance points and the green circles represent the main activity centers. Large v-shapes represent important views of the river that are enhanced and preserved in the design.



**1. Public Pier**  
The public pier gives all citizens access to the water for fishing and boat rental/parking. There is room for fishing, crabbing, or sponging events, and connects to the community center for festivities.



1. Section of Public Fishing Pier

**2. Amphitheater & Fort**  
The entrance towers provide an aerial view of the river and wildlife, a place to hang out, and public restrooms. The towers nearest the river are connected by an aerial boardwalk (the mezzanine), which also provides extra seating for amphitheater events.



2. Section of Amphitheater and Fort



Master Plan

Steinatchee River

**3. The Boardwalk**  
As viewed from the river, the boardwalk connects the fluid boundary, wrapping around the site. The wealth of greenspace encourages folks to garden, bring a lunch, or just play. Great views of the water abound, and outdoor events can be enjoyed in the amphitheater or the deck.

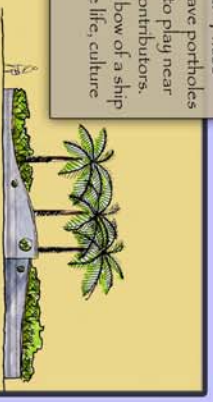


3. Aerial Perspective

**4. & 5. Spring Fountain & Porthole Walls**  
Iconic "porthole" walls are incorporated in the interactive fountain area. These unique, locally constructed walls have portholes in them that encourage children to play near them, and can be dedicated to contributors. The curves are reminiscent of the bow of a ship - an abstraction of Steinhatchee life, culture and history.



4. Perspective View of Fountain



5. Section of Porthole Wall



# Steinhatchee, Florida Riverfront Visioning Project Community Center Proposal

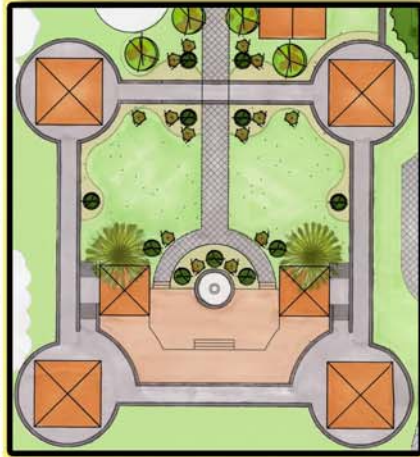
This proposal of the Steinhatchee Community Center uses a form derived from the street grid and the curvilinear river bank. Retaining walls serve to protect in flood situations and offer vertical space to hold plaques and tiles commemorating Steinhatchee's achievements. Native flowering shrubs and trees decorate throughout and open spaces alternate with shelters.



N-S Section



Wide walkways and opportunities to enjoy nature



Plan Enlargement



Site Plan



E-W Section



View of plaques on wall



Example of native planting








Site Perspective



Plan Enlargement



G		<p>The existing Fish market definitely has potential to grow. In this picture the fish market is abandoned.</p>
R		<p>Fishing is the number one activity in Steinhatchee. The fishing dock behind the fish market is not in use because the fish market is not in use.</p>
A		<p>Tree Farming is a major supplier in Taylor County, the problem is that Steinhatchee is not diversified.</p>
C		<p>Fishing is a big part of Steinhatchee as well, the problem is that the area in itself does not have an identity.</p>
E		<p>The Environment does not have a sense of place. The problem is that the Natural communities/landscape within the area is not being addressed.</p>
S		<p>Opportunities for adaptive re-use, and restoration to occur with in the area.</p>

### Precedents



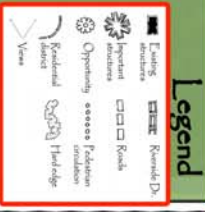
### SKETCHES & PROCESS WORK



Aplachicola, FL  
Fishing Pier

Aplachicola, FL  
Fishing Pier

### Existing Conditions



### Land Use Map



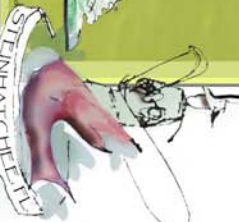
### Case Study

#### Ten Principles for Rebuilding Neighborhood Retail

1. Great Streets needs great Companions
2. It takes a vision
3. Think Residential
4. Honor the pedestrians
5. Parking is Power
6. Merchandise and Lease Proactivity
7. Make It Happen
8. Be Clean, Safe, and Friendly
9. Extend Day into Night
10. Manage for Change



Source: Ten Principles for Rebuilding Neighborhood Retail  
By Michael D. Dear and Michael S. Lyden



# Steinhatchee, Florida: Riverfront Visioning Project

## Fish Market Proposal A 10



Steinhatchee has a reputation of working community, people know each other and the common good is brought together by the environment. The towns culture is recognized as a fishing capital and past wood milling center. The idea of conserving the fish market is of great importance for the proper growth and wellbeing of the towns new waterfront community space. The Fishmarket becomes the center of attention with it becoming a Maritime Museum, which has elements from the museum displayed along Riverside Dr. The refurbished building once again becomes an active fishmarket where the people of Steinhatchee can trade goods and services, as well as enjoy the new features and activities within the area. In addition, the FishMarket is part of a larger Mixed-Use Hub including, parks and civic areas, commercial buildings, a variety of residences, and an entertainment center for day and night life.



**GRACES**

**G**rowth: Urban Infill & Business Incubator

**R**ecreation: Fishing, Bird watching, Boating, Walking trail

**A**griculture: Sustainable and Managed yield

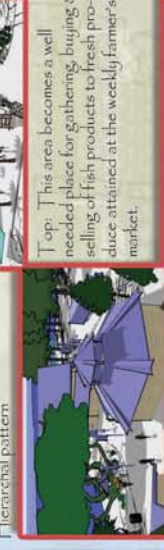
**C**ulture: Portrayed in design, Proud, Educational

**E**conomics: Mixed-Use, Mixed Income, Affordability

**S**ustainability: Ecological & Habitat Restoration, Preserved Wetlands and Mature Vegetation



Top: a perspective view over-seeing the general area and the design of the Fish Market Area. The towers visually enclose the active area and imply the proposed Hierarchical pattern.



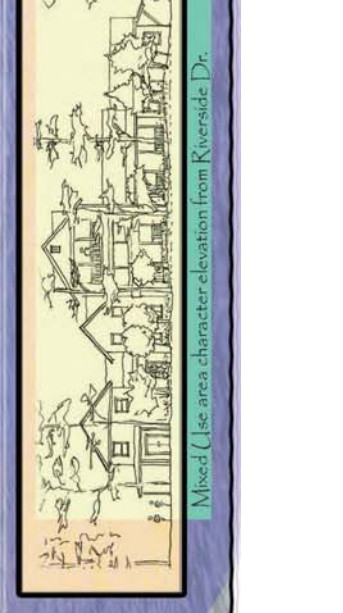
Top: This area becomes a well needed place for gathering, buying & selling of fish products to fresh produce attained at the weekly farmer's market.



Left: Outlook Point. Steinhatchee's newest planned park. Once a desolate parking area would now be the locals hot spot for view-ing relaxing sunsets or shopping at one of the locally owned stores and restaurants.



Right: A view towards the water.



The space between the towers becomes a vivid place for the arts, trade, and residential activities. Supported by elements like the renewed Fish & Farmers Market, Outlook Point and the Mixed-use area. The character in this area can be defined as having a "Coastal Charm" feel to it. The design is meant to encourage regional and local design styles with moderate density, ADA accessible, walkable, and safe.



### Gateway Park



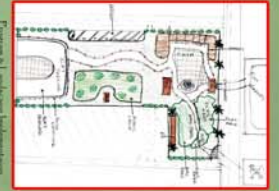
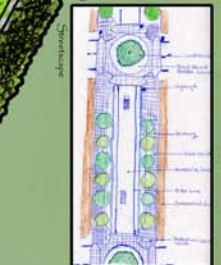
View of proposed On-Street Parking



View of proposed Farmers Market



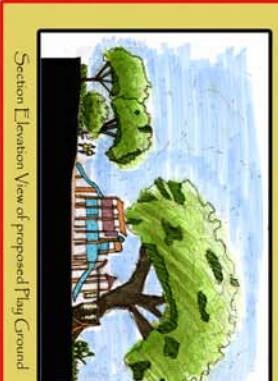
Perspective Elevation View of proposed gatherings Hub around the fountain in front of Farmers Market



Perspective View of proposed Farmers Market & Plaza

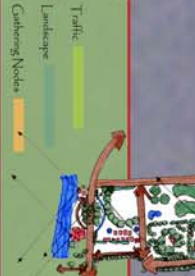
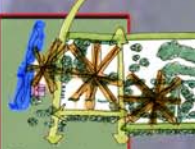


Sketch Axon View of Fish Market, proposed Farmers Market, and Ball Park

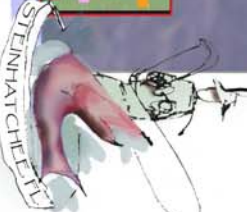


Section Elevation View of proposed Plug Ground

The Fish Market area has a lot of potential. We've decided to revamp the area and bring in more activities such as a playground, open space for multicultural activities, Farmers Market, and Kiosks/Stands for various entrepreneurs. By bringing in more activities, people will come to the site.



### Study Diagrams



### Site Plan



# Steinhatchee, Florida: Riverfront Visioning Project

## Fish Market Proposal C 12



Site Plan



Bird's Eye View of Common and Fish Market

The Common connects the renovated Fish Market with the adaptive reuse boat park to the north. The connection invites a stroll through the park, a visit to the new civic building, dining at the corner restaurant, checking on the teens at the Skate Park, or picking up a to-go lunch before boarding the boat for a day of fishing. Not boating today? Shop at the Flea Market or cross the Mall to the Boutiques of Steinhatchee. Pause under the palms by the fountain. Not boating at the Fish Market before ending the afternoon in the Master Demonstration Garden.



Fountain Perspective



Tower and Hub



Studies for Steinhatchee Common



Site planning, then is the organization of the external physical environment to accommodate human behavior. It deals with qualities and locations of structures, land, activities, and living things. It creates a pattern of those elements in space and time...

-Kevin Lynch, 1982

State Park and Boatwalk



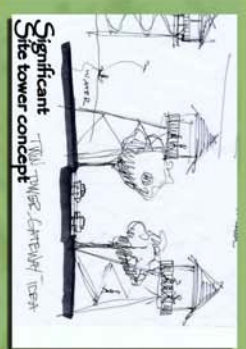


### Local Opportunities

With some of the major issues in Steinhatchee pertaining to river access and parking, designs focused on some strategies to resolve problems and shed light on opportunities for Steinhatchee. The visioning project helps recognize the potential in some areas that should be acquired for preservation and management of the resources available.



**Above:**  
The areas highlighted are the places the design group found to have the most potential for design opportunities. Most of these areas are developed with public access considered and alternatives have been prepared.  
**Below:**  
As Riverside Dr. is the most used road in Steinhatchee, designs encourage landscape, paths, lighting, some amenities and small canoe launches, boat launch, and parks.



### Trails & Boardwalks

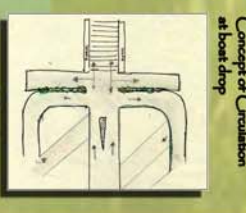
Marshes present unique opportunities. They typically attract wildlife and bird species. The design demonstrates how to use the wetland for recreational and ecological purposes.



**Process work:**  
The development of all our efforts are made possible not only by countless hours of production but communication among the group members. Hopefully, this process can be expressed by the people of Steinhatchee and the region when realization of these suggestions or alternatives are made. Finally, a memorable Waterfront Community in the close future.



**Mid-Sized Boat Launch**  
A high volume boat launch facilitates the access to recreational activities on the water. Circulation within this area is meant to minimize traffic congestion and increase safety. The area is connected by trail to the FishMarket Area and the Community Center by means of Steinhatchee's Historic trail system.



### Street End Parks

These parks are perfect for the smaller vehicle. Both alternatives have the same amenities including Canoe Launch, Restroom, Shower, Water fountain, Picnic and Outdoor Grill



# Steinhatchee, Florida: Riverfront Visioning Project

## THE FUTURE OF STEINHATCHEE

Historic Preservation



Economic Growth



Re-Zoning



Ecological Health



## Considerations & Implementation

**G** Create public - private partnerships for the future of Steinhatchee. Require all new development to add amenities to the township as a part of the cost to build. Developers shall be asked to provide their own infrastructure as well as public access amenities such as sidewalks or boardwalks where appropriate, street lighting, and public parks. Allow the park requirement to link with the Street End Program, so that the Street End Program can be kick started. Encourage developers to provide the design implementation and construction on County owned land instead of requiring the parks to be contiguous with the new construction.

**R** Continue to build on the strength of old Steinhatchee by providing new gathering areas to continue cherished outdoor festivals and add new ones as the places for these new gatherings. Enhance water access for the general public by reactivating the boat drop at the Fish market. Increase public access to the water by identifying and building new hubs on the water or by expanding existing ones. Create alternative boat launches for small boats and canoes through the Street End Program

**A** Strengthen the fishing industry by renewing the concept of sales in the renovated Fish Market. Expand the wood products industry by encouraging artisans and light wood workers to set up shop in Steinhatchee. Use the business incubator model suggested below to stimulate growth in the industry.

**C** Preserve a portion of the history of Steinhatchee by purchasing and renovating the Fish Market. Designate a part of the Fish Market as a Maritime Museum, featuring the seagoing and sponging history of the town. Continue and expand the tourism industry. Create and strongly recommend an architectural pattern book that includes, massing, height restrictions, materiality and architectural character.

**E** Partner with independent conservation organizations to reclaim and maintain the Marshes of Steinhatchee and other endangered natural communities. Use native plants in all new community projects. Recommend pattern books that use green materials for new construction projects

**S** In all grant writing include the funding to provide LEED certification for new and renovation projects. When renovating the Fish Market as a Maritime Museum, set aside spaces for business incubation. Small business can have a space rent free for a period of time in exchange for part time care of the museum and boat drop. Use sustainable materials in all new community projects.



### Front Porch:

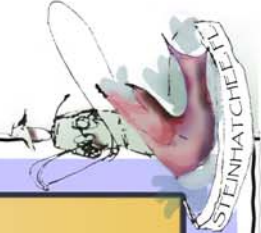
Visitors will be attracted to the new places that will serve as the village's "front porch" areas. They'll come for a weekend or a week to boat, shop, fish hike the marshes, and bird watch. The new gathering places attract the wider community for a variety of day festivals or for an evening.

### Screen Door:

Artist in residence or part time residents will find Steinhatchee's screen door a place where new relationships are founded. The renewed Fish Market and the Community Center encourage interaction and forms the basis for the screen door- welcoming those new to the community. People in the the business incubator program may move to become full time residents.

### Secure Front Door:

Year round residents now have a plan which can be used to define the future of their community, preserving its natural resources, developing smartly for economic growth and diversity, while enhancing a long cherished way of life.



---

**THIS PAGE LEFT  
BLANK INTENTIONALLY**

## Appendix 5

### The Visioning Process

Steinhatchee Waterfronts Florida Partnership worked throughout the year to create a vision of Steinhatchee in the future. The Partnership conducted a series of workshops or get-togethers Summer 2008 specifically to develop a community vision and action plan. Each of these meetings is described below. The materials produced as a result of the meetings are presented here.

#### Get Together 1. Taking Stock of Steinhatchee Waterfronts Partnership

This workshop was held at the Steinhatchee Community Center Thursday, June 19, 2008, from 1:00 – 3:30 p.m. 23 people attended. Participants reviewed the work conducted at Steinhatchee in partnership with Taylor County Board of County Commissioners during Year 1 of the Waterfronts program; they also learned about how the individuals in the Partnership work together and discussed how to be more effective in Year 2. Group members stated that working to get public access to the waterfront has been the No. 1 priority in the first year.

#### Get Together 2. Envisioning the Future

This workshop was held at the Steinhatchee Community Center Tuesday, July 19, 2008, from 1:00 – 4:00 p.m. 17 people attended. Participants were invited to brainstorm as to what they would like to see Steinhatchee to look like in 2013. Ideas included development of a town center and, the No. 1 priority, public access to the waterfront. The group also decided to conduct the next meeting in the evening and to begin the session with a covered dish dinner.

#### Get Together 3. Setting the Path: Creating Foundations for the Future

This workshop was held at the Steinhatchee Community Center Thursday, July 31, 2008, from 6:00 – 9:00 p.m. and preceded by a covered dish dinner. 19 people attended.

Participants were invited to contribute to the development of goals and objectives for one of five priority areas set out – economic revitalization, environmental and cultural resources, hazard mitigation, public access, and organizational development. Individuals self-selected for specific groups; preliminary goals and objectives were set out.

#### Get Together 4. Establishing Priorities and Implementing the Vision

This workshop is scheduled at the Steinhatchee Community Center in mid August 2008 from 1:00 to 4:00.

Participants will set final priorities based on the Steinhatchee vision and the goals and objectives crafted in earlier meetings. Preliminary strategies for selected goals and objectives will be provided as samples for group work to develop the action plan to implement the vision.

---

**THIS PAGE LEFT  
BLANK INTENTIONALLY**

**TAKING STOCK OF  
STEINHATCHEE WATERFRONTS  
FLORIDA PARTNERSHIP**

**1 YEAR AND COUNTING!**

**VISIONING – GET TOGETHER 1**

**19 June 2008**

**Steinhatchee Community Center**

**Steinhatchee, Florida**

## **AGENDA**

**Introductions**

**Waterfronts Florida – an Overview**

**The Steinhatchee Experience**

**Four Corners – Learning about Group Work**

**Reflection on the Steinhatchee Waterfronts Florida Partnership**

**Next Steps – Meeting 2**

**Envisioning the Future**

**01 July 2008**

**Steinhatchee Civic Center**



## ACCOMPLISHMENTS

- Grant
  - Applications
  - Awards
- Getting organized
- Florida A&M University Focus Area Solutions
- Talked about public access
- Looked at the Big Picture
- Looked into ideas such as the 'Pole and Troll' areas

**Four Corners**  
**Experiencing Group Work**



## ACTION

- Gets their attention
- Gets goals accomplished
- Gains community support
- Gets funds
- Gets results
- Boat Ramp



## **CARING**

- The starting point
- If your heart is in it, it keeps you motivated
- Caring gives you meaning
- Passion = progress

## **STRUCTURE**

- Without structure things collapse
- You lose your way without it
- It is the blueprint for action, caring and meaning
- We need all the corners to achieve our goals
- It comes first for the other 3 corners to be used to reach the goals in the easiest way

## MEANING

- Without meaning (purpose/goal) there is no need for structure or action – no one will care.
- Meaning/goals reflect purpose
- Defines importance/priorities
- Waterfronts Florida partnership needs purpose or it will dissolve
- Entice new members



## **QUESTIONS TO PONDER**

- Why do we want to be a Waterfronts Florida Partnership community?
  - Why are we doing this?
  - What does Waterfronts Florida 'do'?
  - What should WE be doing?
- Who's in charge – of what?
- Who are our partners?
- What do the members in the Steinhatchee Waterfronts Florida Partnership have in common?
- What are our resources?
- What are our challenges?'

## **WATERFRONTS FLORIDA**

### **PARTNERSHIP PROGRAM**

#### **PRIORITIES**

- Public access
- Protection of environmental / historical resources
- Hazard mitigation / community resilience
- Economic revitalization

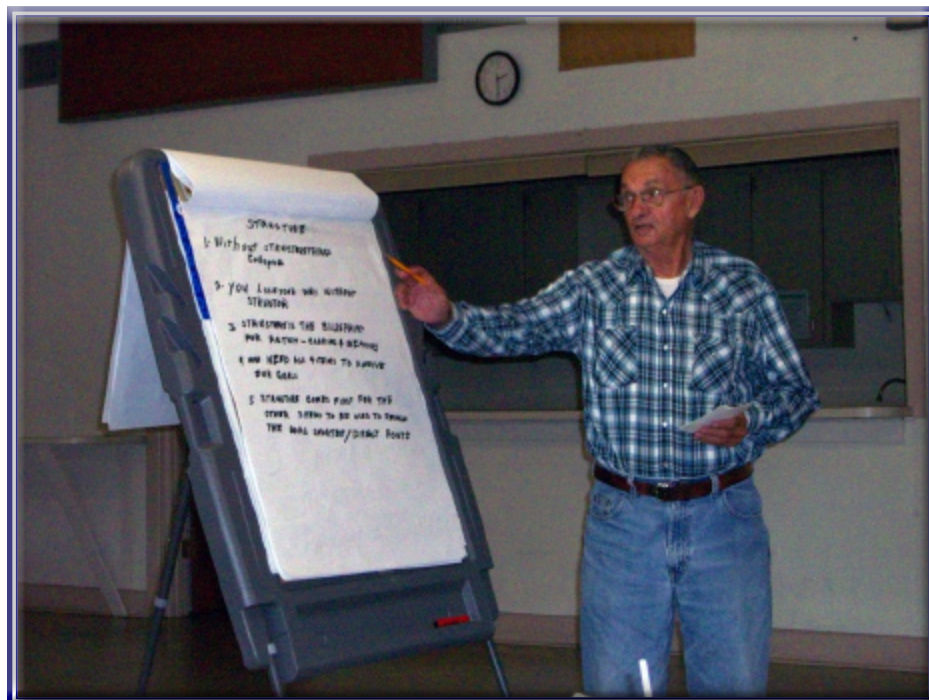
### **FOOD FOR THOUGHT**

- Informal connections – between organizations, between communities
- How to cross political boundaries
- How to work effectively with elected and other county / regional officials
- Learn about grant cycles, benefits, and challenges



### CHALLENGES IN YEAR 1

Issues	How to handle	Other thoughts
The law suit		
Conflict		
Need to show action		
People want instant action		
Money – funding		
Communication		
Structure		



***Quaintness is a non-renewable resource***

**ENVISIONING THE FUTURE  
STEINHATCHEE WATERFRONTS  
FLORIDA PARTNERSHIP**

**LOOKING TOWARD 2013**

**VISIONING – GET TOGETHER 2**

**01 July 2008**

**Steinhatchee Community Center**

**Steinhatchee, Florida**

### Visions/Visioning

- Think about the desired future
- Step in planning
- Concrete
- Specific
- Challenging
- Doable

### Visioning

- Can be the beginning
- Can be opportunity to focus
- What have we been doing
- What are we doing now
- What do we want to do to → create the future

### Imagine July 1, 2013

- **Take a mental photograph**
  - A place for people with all sizes of pocket books
  - Walking area along the river/waterfront
  - We don't have sand beaches
  - Walkway from Keaton Beach to Tennille- Back side of Steinhatchee
  - The town will be off the river
  - Some walking areas
  - Majority of structures are for single families not all condos
  - We need help- I don't see turning it around in 5 years
  - Fish house (10 year project)
  - Green gardens
  - Need parking
  - Have water access
  - Easy access to ramps to get to the falls
  - More parking/shuttles
  - Pull thru parking
  - Dead end streets ½ open to public
  - Off-river green spaces are improved for public
  - We've made tourist friendly signage
  - Smiles; no more fear of economy
  - We have public access
  - Trails along the river- parks are in place
  - Code enforcement

- **Similarities**

- Respect for environment
- Protect cultural integrity of area
- Nobody wants industrial, heavy commercial industry
- Stay like or look like fishing village
- Pedestrian friendly- walkable community





- **Differences**

- Preserve mobile homes or replace with upscale houses (code enforcement)
- Improve what we have- new business district (code enforcement)
- Central business district vs. other approaches improving what we have

- **Unspoken/What's not here**
  - One zoning/multiuse
  - Money- we don't have any
  - If we do it ourselves- 10 year project or more
  - Protect access to river
  - Expand public areas
  - Move up Dallas Creek
    - Marina
    - Dredging issues
  - Dredging
  - Create a giant marina



**What have we done today**

- Nothing
- Dreaming
- Planning
- Probably don't all think alike
- What we want to do
- How to get the money

How do we get more people here?

- Out scalloping
- Need to start doing something
- **Feed 'em**
- Picture
- This is going to happen
- **Evening meetings**



### QUESTIONS TO PONDER

- Why do we want to be a Waterfronts Florida Partnership community?
  - Why are we doing this?
  - What does Waterfronts Florida 'do'?
  - What should WE be doing?
- Who's in charge – of what?
- Who are our partners?
- What do the members in the Steinhatchee Waterfronts Florida Partnership have in common?

### **FOOD FOR THOUGHT**

- Informal connections – between organizations, between communities
- How to cross political boundaries
- How to work effectively with elected and other county / regional officials
- Learn about grant cycles, benefits, and challenges

### CHALLENGES IN YEAR 1

Issues	How to handle	Other thoughts
The law suit		
Conflict		
Need to show action		
People want instant action		
Money – funding		
Communication		
Structure		

***Quaintness is a non-renewable resource***

# **IMPLEMENTATION – GET TOGETHER 3**

## **SETTING THE PATH: CREATING FOUNDATIONS FOR THE FUTURE**

### **STEINHATCHEE WATERFRONTS FLORIDA PARTNERSHIP**

**31 July 2008**

**Steinhatchee Community Center**

**Steinhatchee, Florida**

## Work Session

### Priority Areas

- **Public Access**
- **Environmental / Cultural Resources**
- **Hazard Mitigation**
- **Economic Development**
- **Steinhatchee Waterfronts Florida  
Partnership – the Organization**



*Develop trails, greenways, parks and open spaces in the Steinhatchee Community providing both recreation and the preservation of the native habitat and environment.*

**Public Access (Flip Chart)**

1) Support Melody in biking / hiking trails.

Take 4 parks; tie in the 20 street ends to have access around entire city for walking, biking, picnic areas, park benches, etc.

2) Boat ramps

Get people to meeting in Tallahassee.

Improve boat ramp by Landing.

Riverside Park – canoe, small boat launch.

### **Public Access (Restated)**

**GOAL:** Create a chain-of-parks to tie together four, existing parks and 20 street-ends

**Objective:** Ensure access to and use of publically owned upland resources.

**Objective:** Develop awareness of upland resources and features.

**GOAL:** Improve boat ramps and small boat launch areas at the Landings

**Objective:** Ensure public access to the Steinhatchee River and the Gulf of Mexico from the Steinhatchee community.

**Objective:** Provide recreational opportunities for community and visitors.

**Objective:** Develop awareness of water resources.



*Provide for safe community by developing a hazardous mitigation plan to be incorporated into the county plan, addressing natural and man-made disasters and pre and post-disaster recovery measures and standards ensuring continuity of operations.*

**Hazard Mitigation (Flip Chart)**

Goal Emergency Sirens

Objectives

List organizations to contact

Establish volunteer list call chain

Communications system

Goal Emergency Management Center

Objectives

List hazardous Materials in area

Publish evacuation routes

One-way out

Hazard Mitigation (Restated)

GOAL: Create a local emergency communication system

Objective: Ensure access to information in a timely manner.

Objective: Allow time for evacuation.

GOAL: Create a local Emergency Management Center

Objective: Ensure availability of local resources to respond to emergency.

Objective: Ensure knowledge of evacuation routes.

Objective: Develop awareness of hazardous materials in Steinhatchee area.



*Strive to maintain the historical and cultural integrity of the waterfronts area, preserving the heritage of the community to ensure tomorrow's Steinhatchee continues the values of "Estee Hatchee- River of Man".*

**Cultural and Environmental Resource Protection**

**(Flip Chart) 1/2**

Minimize

- Pollution
    - Dumping
    - Sewage
  - Trash (beer bottles)
- 1) Public awareness/education
  - 2) Find possible funding sources, a new sewer treatment facility
  - 3) Improve education & actual septic tanks in community
  - 4) Create a recycle program with incentives for community.

## Cultural and Environmental Resource Protection

### (Flip Chart) 2/2

Obj. #2: Create a more positive environment to develop more cultural activities

- Get more people involved w/kids & local schools to assess/ dev. What kids want & need in community
- Give them an environment in which they can just be kids  
(Help create drug awareness)
- Create better quality of life through youth programs
- Skate park, movie night, T-ball/baseball
- Frisbee golf
- Miniature golf
- Kids festival
  - Kids designed and implemented

**Cultural and Environmental Resource Protection (Restated)**

GOAL: Create a more positive environment to develop more cultural activities

Objective: Assess and develop programs based on what kids want and need in community

Objective: Create better quality of life in Steinhatchee through youth programs

GOAL: Create partnerships with local and state agencies to develop a focus on local environment.

Objective: Improve quality of ground water and surface water resources

Objective: Improve function of existing septic tanks in community

Objective: Explore options for a new sewage treatment facility

Objective: Create a recycle program with incentives for community.



*Provide the citizens of Taylor County, Steinhatchee and the many visitors to the area public access to the Steinhatchee River and the Gulf of Mexico ensuring for recreation and the economic revitalization of the waterfront community.*

**Economic Revitalization (Flip Chart)**

1. Connect fish house Pier to Bay Breeze Pier.
2. Gazebo in middle of piers. Managed by county.
- ~~3. Casino ship~~
4. Acquire Ideal – portion of
5. Riverside Drive – one way & widen the road



**Economic Revitalization (Restated)**

GOAL: Create a waterfront and over-water walkway to be managed by Taylor County

Objective: Provide public access to the non-boating public.

Objective: Connect the Fish House Pier to Bay Breeze Pier.

GOAL: Acquire waterfront properties including the Fish House and portions of Ideal Marina

Objective: Provide focal point for a “town center” at SR 51 and County Road 361

Objective: Provide maximum public access to Steinhatchee waterfront for community and for visitors / tourists, boating and non-boating.

## The Steinhatchee Waterfronts Florida Partnership

### (Flip Chart)

Goal: Create a structure for beginning + continuing organization with emphasis on waterfront

- Ensure long term focus on WF

Goal: establish a “place” or office for WFP

- Create a presence.



**The Steinhatchee Waterfronts Florida Partnership**

**(Restated)**

GOAL: Create an organizational structure or partnership to emphasize on the waterfront

Objective: Ensure a long term focus on the waterfront

Objective: Provide for continuing focus on waterfront issues including public access, environmental / cultural resources, hazard mitigation, and economic development.

GOAL: Establish a Steinhatchee Waterfronts Florida Partnership office.

Objective: Create a physical focus on Waterfront issues.

Objective: Provide a visible source of information for waterfront

Issues.

**STEINHATCHEE WATERFRONTS**

**FLORIDA PARTNERSHIP**

**Next Meeting**

August nn                      Review draft Vision Document

August 30                      Shells and Scales  
  
  Community event sponsored by  
  
  Waterfronts Florida in  
  
  Partnership with  
  
  The Steinhatchee Projects Board

***Quaintness is a non-renewable resource***



---

**THIS PAGE LEFT  
BLANK INTENTIONALLY**

## Appendix 6

### Table of Applications and Awards

<b>Steinhatchee Waterfronts Partnership - Taylor County, FL Applications and Awards</b>						
GOALS	PROJECT	GRANTING AGENCY	AWARD	MATCHING	STATUS	NEXT STEPS
	Fort Steinhatchee project. The grant will fund playground equipment and outdoor restrooms at the community center, as well as part of the money needed for improvements at the old bridge abutment across the street.	Florida Recreation Development Assistance Program (FRDAP) Florida Department of Environmental Protection (FDEP)	\$135,000		AWARDED.	County engineer working on Master Site Plan. Re-survey in progress.
	Bridge Abutment Funds/Pier.	Coastal Partnership Initiative (CPI) Florida Department of Environmental Protection (FDEP)	\$45,000		AWARDED.	Contract in progress.
	Acquisition of Steinhatchee Fish Market property.	Florida Communities Trust (FCT) Florida Department of Community Affairs (FDCA)	\$6,400,000		Pending - Will do presentation to State in Tallahassee <b>September 4, 2008</b> . Approved as state-designated trailhead; opens opportunities to additional funding sources.	
	Acquisition of Palm Grove marina site.	Office of Greenways and Trails (OGT) Florida Department of Environmental Protection (FDEP)	\$1,400,000		Pending - Will do presentation in Tallahassee <b>September 18, 2008</b> , to OGT Board. Approved as state-designated trailhead; opens opportunities to additional funding sources.	
	Phase II of the Steinhatchee Boat Ramp near the old Woods site. This covers feasibility studies for the Flushing Models required to assess viability of water quality in the proposed basin and for a Wetlands Mitigation Plan.	Florida Boating Improvement Program (FBIP) Florida Fish and Wildlife Conservation Commission (FWC)	\$45,000		AWARDED.	Contract in progress. Work to be started in August 2008.
	In town trail.	Florida Department of Transportation (FDOT)	\$650,000		All FOOT trail projects on hold due to lack of funding.	Work around. Will be eligible for trail construction funding through OGT since Old Steinhatchee Trail and connector Taylor Coastal Loop added to OGT prioritization maps.

**LUMP SUM**

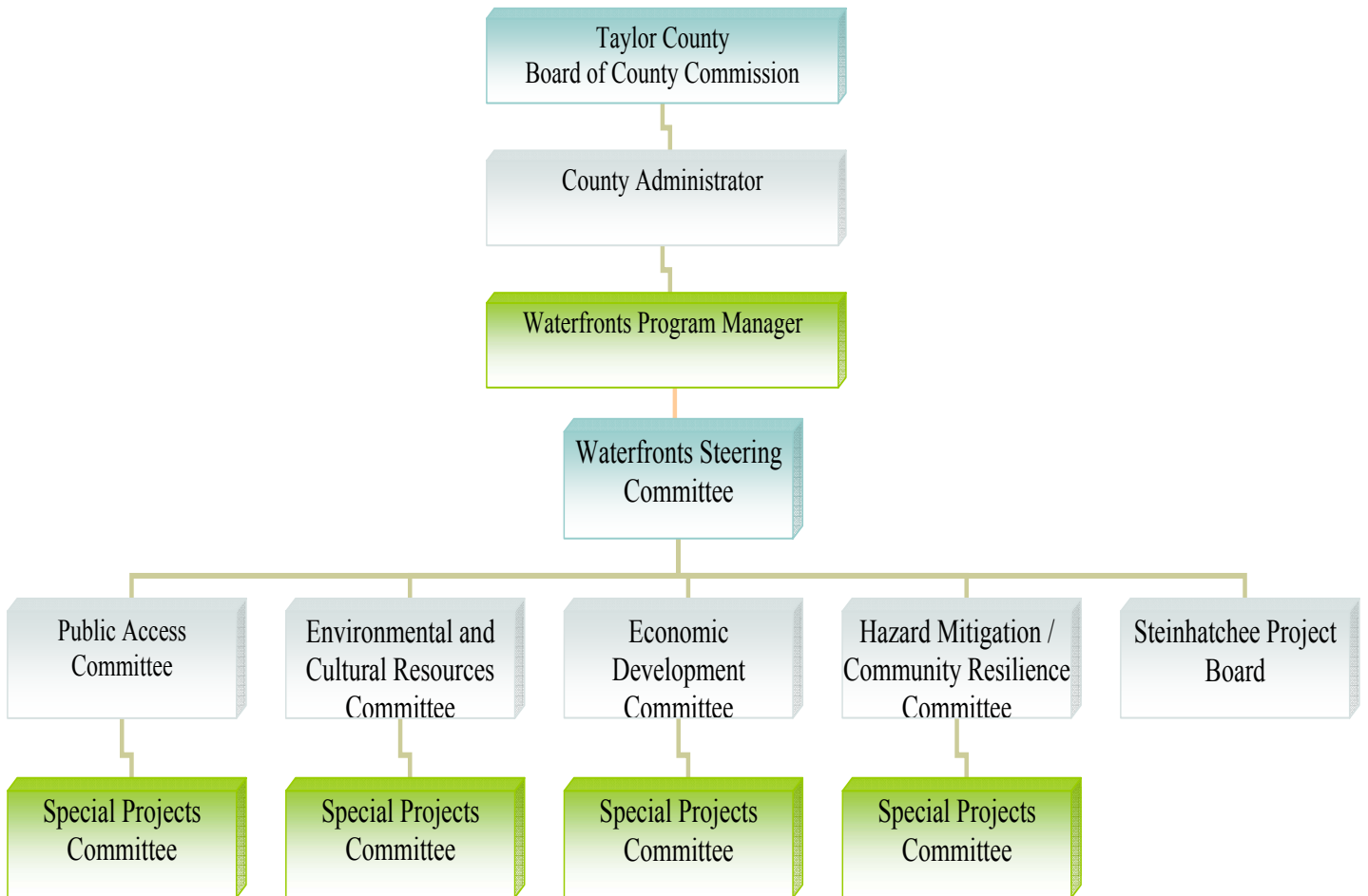
---

**THIS PAGE LEFT  
BLANK INTENTIONALLY**



## Appendix 7

### The Steinhatchee Waterfronts Partnership The Organizational Chart



---

**THIS PAGE LEFT  
BLANK INTENTIONALLY**

---

**Appendix 8**

**Steinhatchee Waterfronts Florida Partnership  
Bylaws**

---

**THIS PAGE LEFT  
BLANK INTENTIONALLY**

**STEINHATCHEE WATERFRONTS  
FLORIDA PARTNERSHIP**

**BY LAWS 2008**

*Taylor County Board of Commissioners  
Taylor County, Florida*

**BYLAWS OF THE  
STEINHATCHEE WATERFRONTS FLORIDA  
PARTNERSHIP COMMITTEE  
AUGUST 2008**

The Steinhatchee Waterfronts Florida Partnership is administered under the direction of the Taylor County Board of Commissioners

**ARTICLE I- ORGANIZATION NAME**

The name of the committee shall be known as the STEINHATCHEE WATERFRONTS FLORIDA PARTNERSHIP COMMITTEE, hereinafter referred to as the COMMITTEE. The Committee shall work under the direction of the Taylor County Board of Commissioners which is the Committee's governing body and agency of record under the State Waterfront's Florida Partnership Program with the Florida Department of Community Affairs. The Program Manger of the Steinhatchee Waterfronts Florida Partnership will work under the direction of the Board of Commissioners.

**ARTICLE II- GEOGRAPHICAL AREA**

The primary area covered by the Partnership Committee is the bounded area of Steinhatchee submitted to the Florida Department of Community Affairs and the state Waterfronts Florida Partnership Program. This area encompasses 4<sup>th</sup> Street West to the North West and Doyle Street to the South East. This boundary includes all of the Steinhatchee "proper" riverfront. However, the Partnership Committee may focus on programs, events, business enhancement, projects and enhancements throughout the Steinhatchee area in order to support goals of the primary area.

**ARTICLE III- PURPOSE**

The Partnership committee is a cooperative effort between the Taylor County Board of Commissioners, Steinhatchee Waterfronts Florida Committee members, residents, businesses, and other organizations working to ensure the economic revitalization of the Steinhatchee community by focusing on providing public access to the waterfronts, environmental and cultural resource protection , tourism development related to the natural resources of the area in a responsible manner, and adequate hazard mitigation measures.

**ARTICLE IV- MISSION STATEMENT**

**\* Provide the citizens of Taylor County, Steinhatchee, and the many visitors to the area public access to the Steinhatchee River and the Gulf of Mexico ensuring for recreation and the economic revitalization of the waterfronts community.**

**\* Develop trails, greenways, parks and open spaces in the Steinhatchee community providing both recreation and the preservation of the native habitat and the environment.**

**\* Provide for a safe community by developing a hazardous mitigation plan to be incorporated into the county plan, addressing natural and man- made disasters and pre and post-disaster recovery measures and standards ensuring continuity of operations.**

**\* Strive to maintain the historical and cultural integrity of the waterfronts area, preserving the heritage of the community to ensure tomorrow's Steinhatchee continues the values of "Esteem Hatchee" - River of Man.**

## **ARTICLE V- MEMBERSHIP**

Membership to the Committee is initially open to those willing and interested in serving and carrying out the mission of the organization. Additional members shall be appointed as so needed by the Committee or the Taylor County Board of Commissioners. Committee members shall be approved by the Taylor County Board of Commissioners.

## **ARTICLE VI**

The Committee shall be organized as follows:

### **1, MEETING**

- a. The Committee shall meet monthly Meetings shall be held at a time and place agreed upon by the committee. All regular meetings shall be advertised a minimum of seven days prior to the meeting. Special meetings may be held upon call of the Program Manager or the Committee Chairman, upon twenty four hour notice to the other Committee members and notification to other interested parties. Special meetings shall be held at appropriate places and times. Special meetings must have the approval of an appropriate representative of the Taylor County Board of Commissioners.**
- b. All meetings shall be open to the public.**
- c. Minutes shall be kept of all meetings.**

## **2. OFFICERS**

- a. The Committee shall elect a Chairman, Vice-Chairman, and a Secretary to serve a one (1) year term. Elections shall be in the month of September and Officers will be elected from among the Steering Committee members. The Officers shall assume office on the first day of the month following election (October). However, upon approval by a majority vote of the Committee, an extension in the term of office for the Officers may be made for an additional one (1) year.**
  
- b. Nominations from the floor for the Chairman, Vice Chairman and Secretary positions will be accepted at a regular meeting with elections decided by a simple majority vote of those present.**
  
- c. Only one member per family may serve as an officer**
  
- d. An individual who holds an elected public office is not eligible to serve as a Committee Officer. If an Officer is running for election to serve as a public official they must resign as an Officer of the Committee. A new Officer shall be elected at the meeting following the current Officer resignation .**
  
- e. The Chair shall serve as the elected leader of the Committee and shall work under the auspices of the Program Manager on developing policies and procedures for the Committee and provide assistance in the administrative oversight of the program. With approval of the Program Manager, the Chairman shall conduct meetings and/or serve as the Program Manager's representative.**
  
- f. The Vice Chair shall in the absence of the Chair, or in the event of the Chair's inability to perform the duties of the Chair. When doing so, the Vice Chair will abide by the same rules and restrictions of the Chair. The Vice Chair will also provide assistance to the Program Manager as so needed.**
  
- g. The Secretary duties will include performing oversight and the reporting of meeting records, recording all votes and minutes. The Secretary shall provide copies of minutes to Program Manager for review and upon approval provide copies to Committee members. The Secretary will provide administrative assistance to the Program Manager. In the absence of the Chair and the Vice-Chair, the Secretary shall act as Chair and when so acting shall be subject to the restrictions of the Chair.**



- h. Officers shall abide by policies and procedures set forth by the Taylor County Board of Commissioners and abide by policies established by the Department of Community Affairs and the Waterfronts Florida Program.**

### **3. COMMITTEE MEMBERSHIP**

- A. There shall be a Steering Committee consisting of 25 people including the elected officers. The Steering Committee under the auspices of the Program Manager and the Taylor County Board of Commissioners shall have the authority and responsibility to fulfill the goals set forth by the Steinhatchee Waterfronts Florida Partnership Committee. The committee will assist with implementing goals outlined in the Visioning Plan. The Steering Committee will assist with setting policies and procedures for the Committee. These policies and procedures will be consistent with those set by the Board of Commissioners and the state Waterfronts Florida Guidelines. The Steering Committee will review the Vision Plan and goals on no less than a semi-annual basis and make recommendations for changes and/or adjustments to the plan as so needed. Policy decisions made by the Steering Committee are subject to the review and vote by the entire Steinhatchee Waterfronts Florida Committee. The Secretary shall keep minutes of the Steering Committee meetings. The Steering Committee shall meet monthly immediately after the main Committee meeting and as so needed to accomplish the goals and objectives set forth.**
- B. Any vacancy on the Steering Committee will be advertised by the Taylor County Board of Commissioners and the Board of Commissioners shall select from the applicants the new member(s) to fill the vacancy. The Committee make up shall consist of ten members of the Steinhatchee business community, two members from the Steinhatchee Chamber of Commerce, six members from the Steinhatchee Projects Board, and seven general community members.**
- C. Members wishing to resign shall notify the Program Manager or the Chairman, Members who miss three consecutive meetings without just cause will be replaced as a Steering Committee Member.**

### **4. COMMITTEES**

**The Committee may create such committees as study groups, special projects and**

**task forces as so necessary to assist the Committee in the performance of its duties and responsibilities to accomplish the goals of the Waterfronts Florida Program and the implementation of the Vision Plan. Committees shall be comprised of members of the Committee, and other non-voting members as necessary and approved by the Steering Committee and the Program Manager. A member of the Steering Committee shall be designated by the Program Manager and/or Chairman to serve as the Chair of the task force, study group or special committee. These committees shall report their progress to the Program Manager and/or Chair after each meeting and minutes shall be kept of said meetings. In addition to the formally established Steering Committee, the Steinhatchee Waterfronts Florida Partnership shall consist of four subcommittees which will consist of the following:**

- A. Public Access to the Waterfronts Committee- This committee shall be comprised of a Chairperson from the Steering Committee and at least six other members. It is not necessary to serve on the Steering Committee to participate on this subcommittee.**
- B. Environmental, Cultural, and Historical Resource Protection Committee- This committee shall be comprised of a Chairperson from the Steering Committee and at least four other members. It is not necessary to serve on the Steering Committee to participate on this subcommittee.**
- C. Hazardous Mitigation Committee- This committee shall be comprised of a Chairperson from the Steering Committee and at least three other members. It is not necessary to serve on the Steering Committee to participate on this subcommittee.**
- D. Economic Revitalization Committee – This committee shall consist of a Chairman from the Steering Committee and at least four other members. It is not necessary to serve on the Steering Committee to participate on this Subcommittee.**

## **ARTICLE VII- DUTIES AND FUNCTIONS**

The duties and the functions of the Steinhatchee Waterfronts Florida Steering Committee members include:

1. Being a voice for the community of Steinhatchee in matters related to public access to the waterfronts, environmental, historical, and cultural resource protection, hazardous mitigation, and economic revitalization.
2. Assist in the development of the Vision Plan and a strategic plan for how the goals set forth in the Vision Plan shall be implemented.
3. Assist in the selection and support projects that further the mission, goals and policies of the Committee.

4. Support projects and programs which will assist in the economic revitalization of the community.
5. Attend Committee meeting on a regular basis and actively participate in projects, programs, and committee goals.
6. Promote both the Steinhatchee Waterfronts Florida Partnership program and the community of Steinhatchee in a positive manner.
7. Promote the standards outlined in the Partnership Mission Statement.
8. Promote the state Waterfronts Florida Program and provide assistance to sister Waterfronts designated communities when so needed.

#### **ARTICLE VIII-FINANCIAL MATTERS**

All purchases and expenditures which are made through the contract with the Department of Community Affairs and the Waterfronts Florida Partnership Program shall be approved and processed through the Program Manager and the Taylor County Board of Commissioners. All policies and procedures set forth by the Board of Commissioners shall be followed. No expenditures shall be made without an advance purchase requisition from the County.

The Steinhatchee Projects Board will be hosting fund raisers and seeking donations for various Waterfronts Partnership projects and they shall have over site of those funds as per their policies and procedures.

#### **ARTICLE IX- PARLIMENTARY AUTHORITY AND ORDER OF BUSINESS**

1. The Committee shall be governed by the most recently published edition of Roberts Rules Of Order. These rules may be preempted in such cases they are not consistent with operating procedures or special rules of order the Committee may adopt which is also approved by the Taylor County Board of Commissioners.
2. Committee members have the right to cast one vote for Committee issues which require a vote. There may be no more than two voting members per household. No member shall be allowed a proxy vote or an alternate vote in the member's place.
3. The Committee shall be governed by the laws of the State of Florida with respect to open and publicly advertised meetings.
4. Members of the Committee may be removed for continual non-attendance (three consecutive meetings) except for extenuating circumstances. Members may be removed for misconduct with a majority vote of the members of the Steering Committee and approval of the Board of Commissioners.

5. A quorum of the Steering Committee must be present to vote on any issue. A quorum will consist of thirteen of the twenty five member Committee. The subcommittees shall require a majority vote
6. The order of business for all meetings shall be as follows:
  - a. Call to order
  - b. Approval of minutes of previous meeting
  - c. Establish a quorum is present
  - d. Introductions and comments by Chair and Program Manager
  - e. Old business
  - f. New business
  - g. Public Comment & concerns
  - h. Miscellaneous business and committee comments
  - i. Adjournment

## **ARTICLE X**

**The By Laws and operating procedures of the Committee may be amended with a majority vote of the Steering Committee members when a quorum has been declared and the proposed changes have been provided to the Steering Committee members at least seven days prior to the meeting. These changes must also be approved by the Taylor County Board of Commissioners and must be in compliance with policies and standards set forth by the Department of Community Affairs and the Waterfronts Florida Program guidelines.**